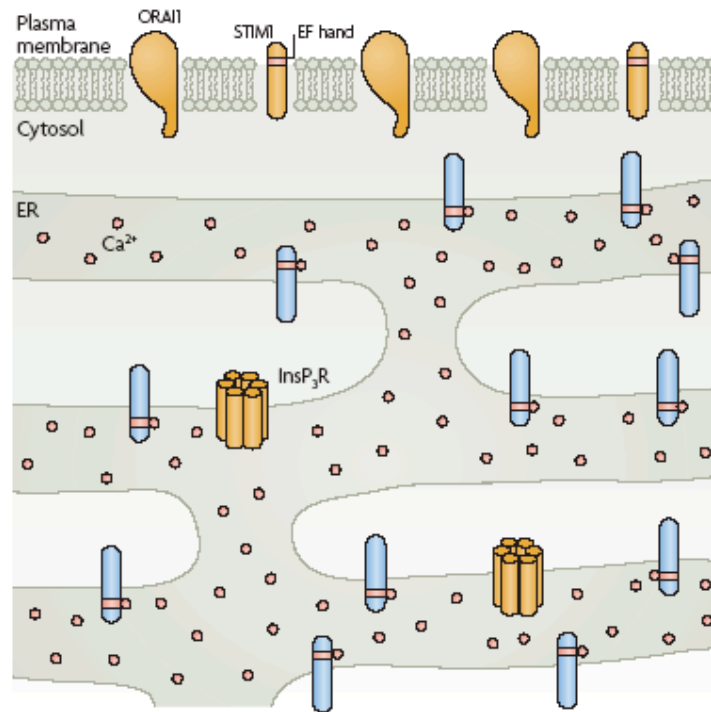
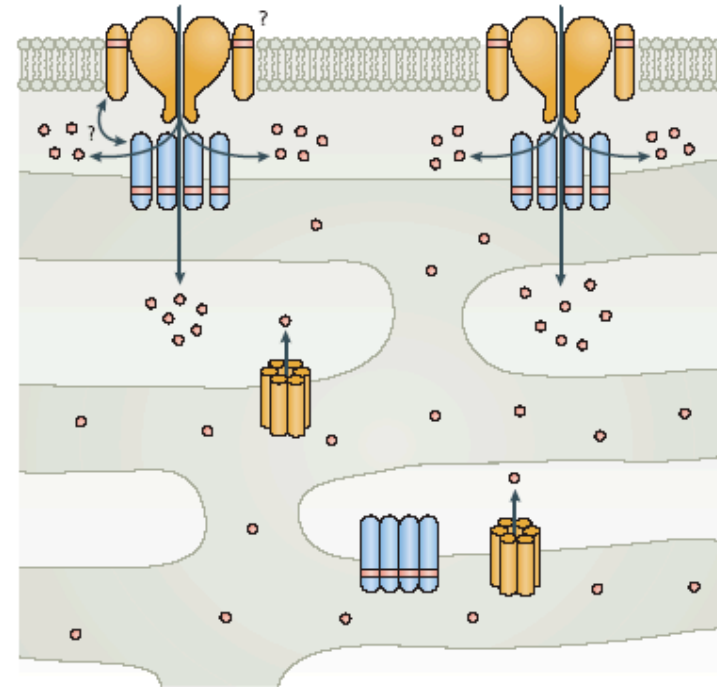


a Ca²⁺ stores filled: CRAC closed



b Ca²⁺ stores depleted: CRAC activated



Nature Reviews | Immunology

Figure 2. Redistribution of STIM1 following Ca²⁺ store depletion. Upon depletion of ER Ca²⁺ stores and Ca²⁺ dissociates from the EF-hand motif of STIM1, and STIM1 redistributes from an apparently homogenous distribution pattern (A) in the ER into discrete puncta (B). A fraction of these puncta is localized close to the plasma membrane and colocalizes with clusters of ORAI1-containing Ca²⁺ channels and sites of localized Ca²⁺ influx in the plasma membrane. -- From Feske 2007, *Nature Reviews Immunology*.