

Genitourinary Pelvic Protocols

Routine Prostate

Last updated: 6/12/01

Phased array coil centered over lower pelvis.

No Gadolinium contrast.

Sequence	Plane	Comment	Film #
T1 TSE	Ax	High resolution – 512 matrix. + Mag (small FOV)	2
T2 TSE	Ax	High resolution – 512 matrix. + Mag (small FOV)	2
T2 TSE	Cor	High resolution – 512 matrix. + Mag (small FOV)	2
HASTE	Cor	No fat sat. 5-6mm slices	2
T1 in	Ax	Coverage from aortic bifurcation to symphysis pubis.	2
TrueFISP	Ax	Coverage from aortic bifurcation to symphysis pubis.	2

NOTE: These protocols apply to Siemens Symphony (with Quantum gradients) and Sonata systems. While they reflect the protocols used at NYU Medical Center, NYU is not responsible for their application elsewhere.

Routine Peri-rectal Abscess/Fistula

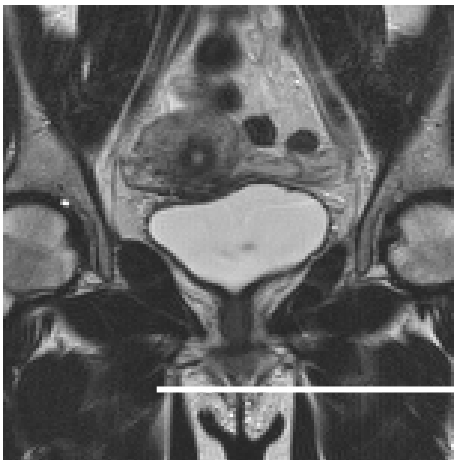
Last updated: 6/29/01

Phased array coil centered over lower pelvis/rectum

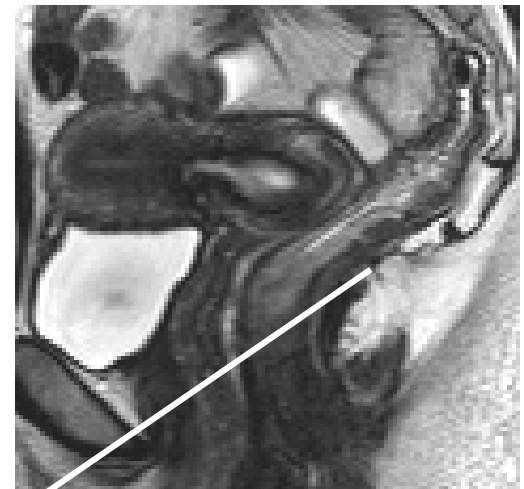
+ 20 cc of Gadolinium contrast (*)

Sequence	Plane	Comment	Film #
T2 TSE	Ax	High resolution – 512 matrix. -2-4 mm slices through rectum from prostate	2
T2 TSE	Cor	High resolution – 512 matrix. 2-4 mm slices through rectum from prostate	2
T2 TSE	Ax	Non-breath-hold. (from female pelvis) (4mm 0.2 gap) through entire pelvis	2
HASTE	Cor	No fat sat. 5-6mm slices	2
T1 in	Ax	Coverage from aortic bifurcation to symphysis pubis.	2
VIBE pre	Ax	Coverage from aortic bifurcation through rectum	2
VIBE post	Ax	Coverage from aortic bifurcation through rectum 2-measures 60, 180 seconds	2

(*) The use of gadolinium contrast material for these applications represents off-label usage in the U.S. Outside the U.S., please consult your country's regulations for local guidelines.



**Orientation of
high-res urethra
T2 images**



NOTE: These protocols apply to Siemens Symphony (with Quantum gradients) and Sonata systems. While they reflect the protocols used at NYU Medical Center, NYU is not responsible for their application elsewhere.

Routine Bladder

Last updated: 6/12/01

Phased array coil centered over pelvis.

Weight based Gadolinium contrast (*), 15cc if pt is less than 180 pounds; otherwise 20cc Gd

Run sequences in the order listed.

Sequence	Plane	Comment	Film #
T2 TSE	Sag	Non-breath-hold. (from female pelvis) (4mm 0.2 gap)	2
T2 TSE	Ax	Non-breath-hold. (from female pelvis) (4mm 0.2 gap)	2
T1 in	Ax	Coverage, bifurcation to pubic symphysis.	2
HASTE	Cor	Thru kidneys. Use body coil if necessary.	2
VIBE	Ax	Small FOV. Try for 2 mm thickness.	2
VIBE	Ax	Scan delay = 45 sec. 2 measures (0 and 180 sec).	1,2

(*) The use of gadolinium contrast material for these applications represents off-label usage in the U.S.
Outside the U.S., please consult your country's regulations for local guidelines.

NOTE: These protocols apply to Siemens Symphony (with Quantum gradients) and Sonata systems. While they reflect the protocols used at NYU Medical Center, NYU is not responsible for their application elsewhere.

Routine Adrenal

Last updated: 6/12/01

Phased array coil centered over pelvis.

No Gadolinium contrast.

MD to check.

Sequence	Plane	Comment	Film #
T1 in/out	Ax	4-5 mm., Small FOV	2,2
HASTE	Cor	4-5 mm. Without fat sat.	2
HASTE	Ax	4-5 mm. Without fat sat.	2
VIBE	Ax	Small slab.	1

NOTE: These protocols apply to Siemens Symphony (with Quantum gradients) and Sonata systems. While they reflect the protocols used at NYU Medical Center, NYU is not responsible for their application elsewhere.