

Fellowship in Medicine and Public Health Research



OVERVIEW

The New York University School of Medicine offers a 2-year Fellowship in Medicine and Public Health Research designed for physicians interested in careers in population-based or translational research with a focus on disease prevention, health promotion and preparedness in urban communities. A Masters of Science in Clinical Investigation with a concentration in Public Health Research is awarded upon program completion.

Anchored in NYU's School of Medicine, with close ties to NYU's other schools and public health agencies in the NY metropolitan area, our Program's agenda in research training at the interface of medicine and public health builds on NYU's integrated strengths in research, care delivery, public health practice and training.

Graduates of this unique program will contribute to the public's health through research, scholarship, and program leadership.

BACKGROUND

Despite enormous strides in medical science and record-high spending on health care, translation of many of our medical advances into improved population health has not been achieved. This schism between “medicine” and “public health” comes at great cost to society. New research initiatives focused on defining effective strategies for applying medical advances to health promotion, disease prevention and preparedness in complex and diverse urban populations are urgently needed. The Fellowship in Medicine and Public Health Research at NYU School of Medicine has been designed to train a cadre of physician-leaders to meet this challenge.

THE PROGRAM

The Fellowship in Medicine and Public Health Research trains physician investigators whose research will focus on how best, given real-world resource constraints, to optimize individual and population health outcomes in urban environments. In pursuing this research training agenda, full advantage is taken of the enormous diversity of patients served at NYU Medical Center’s hospitals (including the legendary Bellevue Medical Center, the VA NY Harbor system, and Tisch Hospital), the information systems that link clinical, utilization and administrative data at these sites, and a rich array of intra- and inter-institutional partnerships with local (e.g., New York City Department of Health and Mental Hygiene) and state (e.g., New Jersey Department of Health) agencies at the front lines of public health. The fellowship, supported by the Center for Disease Control and Prevention (CDC), is designed to provide fellows the unique research opportunity of working with systems of care delivery, in collaboration with public health agencies, to define and model the status quo, devise and implement potential improvements, and analyze their impact on health outcomes and cost.

Each Fellow will receive a stipend, full tuition, health insurance, books, travel, and related program expenses, including support for a research project.

CORE ACTIVITIES

The training program consists of a core curriculum, innovatively taught to optimize its effectiveness; extensive mentored research experience; and a core integrative seminar to bridge the worlds of clinical medicine and public health, of academic research institutions and front line public health organizations. The program, designed with the flexibility to permit individualized focus, thus includes:

- formal courses in core public health research disciplines
- mentored research in public health
- integrative seminar

The research component of the Program offers fellows a wide range of potential areas of inquiry under the guidance of faculty and field mentors of national stature. Cross cutting themes and methodologies foster collaboration. Field placement in front line public health settings will be available to all fellows to complement or enrich their mentored research activity.

FELLOWSHIP PROGRAM CURRICULUM OVERVIEW

Fellows are enrolled in New York University School of Medicine's Masters of Science in Clinical Investigation program. Courses, taught by seasoned NYU faculty, provide fellows with the foundation of knowledge and research skills requisite for investigative careers at the interface of medicine and public health.

Supplementing the formal curriculum, a biweekly *Journal Club* familiarizes fellows with the evidence base and develops their skills in critical analysis of the literature. A biweekly *Research-in-Progress* seminar provides faculty and peer mentorship for research initiatives at all stages of development. Fellows make *Site Visits* to a wide range of public health programs and institutions in the NYC area to deepen understanding of the public health infrastructure and foster potential research collaboration. In *Meet the Professor* sessions, public health researchers from NYU, NYC and beyond tell the stories of their own career development and discuss their current work. Fellows are thus exposed to a broad array of examples of scientists and leaders in medicine and public health.

MS in Clinical Investigation: Curriculum Outline

CORE COURSES

Clinical Research Methods

Epidemiology

Biostatistics

Environmental Health

Health Services Research Methods

Scientific Integrity and the Responsible Conduct of Research

Emerging Health Threats & Preparedness

Health Economics and Payment Systems

Advanced Biostatistics

Medical Informatics in Public Health

INTEGRATIVE SEMINAR *(all semesters)*

Applying Public Health Research to Real World Problems

MENTORED INDEPENDENT RESEARCH *(all semesters)*

MENTORING

A centerpiece of the Fellowship in Medicine and Public Health Research is engagement in a mentored research project. Fellows select an area of inquiry and a senior mentor consistent with their interests and experience. Fellows have the opportunity to collaborate with experienced leaders of front-line public health agencies as well as with academic leaders in medical investigation. Fellows hone skills in planning and implementing substantive and pragmatic research projects while immersing themselves in the realities and challenges of translating evidence into practice at the population level.

Fellows are initially assigned a Faculty Advisor to orient them to the Program and institution, guide them in shaping their research focus, and aid in selection of their mentoring team. Fellows select a primary senior research mentor from among those participating in the training program. Mentoring teams complement the role of the senior mentor by providing the additional expertise of a content specialist, a site mentor from one

of our clinical or public health partners, or another methodologist (perhaps a health economist, or behavioral psychologist) as needed. An analytic team (biostatistician, data analyst, and data manager) provides additional support.

Site mentors are leading public health practitioners with extensive breadth and depth of experience in the design, implementation and evaluation of public health programs. Examples include senior members of the large, dynamic Departments of Health (e.g., New York City, New Jersey), the New York City Health and Hospitals Corporation, the New York Academy of Medicine, and others collaborating with NYU in this training initiative.

Fellows meet regularly with their multidisciplinary mentor team to guide project development from inception through implementation, data analysis and dissemination. A *Masters Thesis Committee* for each fellow establishes and reviews individual learning goals, reviews research progress, and addresses any potential challenges or impediments to the fellow's progress. Presentation and defense of fellows' research projects is the final requirement of the MS degree.

CLINICAL RESPONSIBILITY

Fellows are encouraged to engage in part-time clinical activity in their area of specialty.

OUR FACULTY

The faculty of the Fellowship in Medicine and Public Health Research is comprised of leading investigators, mentors, educators, and practitioners in urban health protection and preparedness, drawn from throughout NYU, the New York City area and across the nation.

COURSE DIRECTORS AND MENTORS (SELECTED)

Executive Committee Faculty

Marc N. Gourevitch, MD, MPH

Principal Investigator

Professor of Medicine

Director, Division of General Internal Medicine

Lewis R. Goldfrank, MD

Co-Principal Investigator

Professor and Chair

Department of Emergency Medicine

Mark D. Schwartz, MD

Program Director

Associate Professor of Medicine

Division of General Internal Medicine

George Foltin, MD

Associate Professor of Pediatrics and Emergency Medicine and Director, Center for Pediatric Emergency Medicine

Mack Lipkin, MD

Professor of Medicine and Director, Section of Primary Care

Alan Mendelsohn, MD

Assistant Professor of Pediatrics and Director of Fellowships in Developmental-Behavioral Pediatrics and in General Academic Pediatrics.

NYU School of Medicine Faculty

Martin J. Blaser, MD

Professor and Chair, Department of Medicine

Professor of Microbiology

Colleen Gillespie, PhD

Assistant Professor of Medicine

Francesca Gany, MD, MS

Associate Professor of Medicine and Director, Center for Immigrant Health

Adina Kalet, MD, MPH

Associate Professor of Medicine and Director of Medical Education Research, Advanced Educational Systems

Allen Keller, MD

Associate Professor of Medicine and Director, Survivors of Torture Program

Lewis Nelson, MD

Associate Professor of Emergency Medicine and Director, Medical Toxicology Fellowship Program

Rama Rao, MD

Assistant Professor of Forensic Medicine

Joan Reibman, MD

Associate Professor of Medicine and Environmental Medicine and Director, Asthma Center

Nirav Shah, MD, MPH

Assistant Professor of Medicine, and Associate Investigator at the Geisinger Health System, Danville, PA

Neil Steigbigel, MD

Professor of Medicine, Division of Infectious Diseases

Paolo Toniolo, MD, MSPH

Professor and Director, Division of Epidemiology, Department of Obstetrics and Gynecology

Marc Triola, MD

Assistant Professor of Medicine and Chief, Section of Medical Informatics, Division of General Internal Medicine

Chi-Hong Tseng, PhD

Assistant Professor, Division of Biostatistics, Department of Environmental Medicine

Other NYU Faculty

John Billings, JD

Associate Professor of Health Policy and Public Service and Director of the Center for Health and Public Service Research, Robert F. Wagner Graduate School of Public Service

Sewin Chan, PhD

Associate Professor of Public Policy
Robert F. Wagner Graduate School of Public Service

James Macinko, PhD

Assistant Professor of Public Health, Department of Nutrition, Food Studies, and Public Health, Steinhardt School of Education

Marian Nestle, PhD, MPH

Paulette Goddard Professor of Nutrition, Food Studies, and Public Health, Steinhardt School of Education

Other Faculty

Karen Scott Collins, MD, MPH

Deputy Chief Medical Officer,
NYC Health & Hospitals Corporation

Arthur Reingold, MD

Professor of Epidemiology and Director, Division of Epidemiology, University of California, San Francisco

Christina Tan, MD

Medical Director, Communicable Disease Service,
New Jersey Department of Health and Senior Services

David Vlahov, PhD

Director, Center for Urban Epidemiologic Studies,
New York Academy of Medicine

Isaac Weisfuse, MD

Deputy Commissioner, Division of Disease Control,
NYC Department of Health and Mental Hygiene

ELIGIBILITY

Applicant must be:

- A U.S. citizen or a foreign national with a visa permitting permanent U.S. residence
- Board eligible or certified and a graduate of an accredited clinical residency program.

An active NYS medical license is required before matriculation.

HOW TO APPLY

Applicants should submit an application, CV, and personal statement which addresses career goals, prior research, professional experiences, and proposed area(s) of research interest.

Application forms may be downloaded from:

<http://www.med.nyu.edu/medicine/dgim/education/fellowship/publichealth.html>

or by contacting Jaclyn.Aperi@med.nyu.edu

- Complete the application (including personal statement);
- Return application with current curriculum vitae;
- Arrange for 3 letters of recommendation to be submitted under separate cover.

All materials should be mailed to:

Mark D. Schwartz, MD

Program Director

Fellowship in Medicine and Public Health Research

Division of General Internal Medicine

NYU School of Medicine

VA New York Harbor Healthcare System

423 East 23rd Street, Suite 15N

New York, NY 10010

When the above materials have been received, we will contact you regarding the availability of interviews with program faculty.

SELECTION PROCESS

In addition to data gathered during the application and interview process and from letters of recommendation, criteria for selection include evidence of:

- 1 Excellence during clinical medical training;
- 2 Commitment to the scientific process, such as previous research and scholarship; and,
- 3 Commitment to addressing public health problems.

.....
For inquires contact:

Jaclyn Aperi, MA

Educational Coordinator

Fellowship in Medicine and Public Health Research

Jaclyn.Aperi@med.nyu.edu

212-263-4245

or

Mark D. Schwartz, MD

Mark.Schwartz3@med.va.gov

212-686-7500, ext. 6135

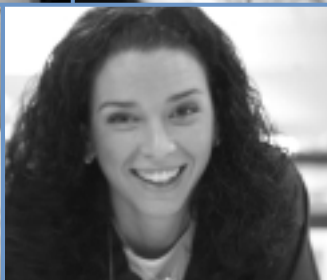
.....
Deadlines

February 1, 2007 Deadline for applications

March 30, 2007 Last date for selection of Fellows

April 15, 2007 Last date for acceptance of position
by Fellows

.....
**Members of under-represented/disadvantaged minority groups
are strongly encouraged to apply.**



NYU SCHOOL OF MEDICINE
550 First Avenue, OBV-618
New York, NY 10016