

How to Apply

To apply, applicants should include the following in their application packet:

- A cover letter
- Curriculum Vita
- Two sample reports
- Three recommendation letters

Submission deadline is January 15, 2009. Materials should be sent to:

William B. Barr, Ph.D., ABPP
223 East 34th Street

New York University
Comprehensive Epilepsy Center
New York, NY 10016

Our fellowship program is a member of the of the Association of Postdoctoral Programs in Clinical Neuropsychology (APPCN). As an APPCN program, we participate in the computerized match operated by National Matching Services (NMS). For more information, visit the website of the APPCN at <http://appcn.org>

Interviews will be scheduled with qualified applicants. On-site interviews are preferred but we will also consider interviewing at INS.

New York University - CEC

223 East 34th Street
New York, NY 10016

Phone: 646-558-0809

Fax: 646-385-7167

E-mail: william.barr@nyumc.org



Langone Medical Center

NYU Comprehensive Epilepsy Center

Postdoctoral Fellowship in Clinical Neuropsychology

New York University Comprehensive Epilepsy Center

New York University - CEC

Tel: 646-558-0809

About Our Center

The NYU Comprehensive Epilepsy Center is a Level 4 epilepsy center, as designated by the National Association of Epilepsy Centers. Such facilities are the most comprehensive in the country, providing the most complex forms of intensive monitoring, extensive neuropsychological and psychosocial services, and neurosurgical services. Our center is one of the largest in the country, admitting over 800 adults and 400 children each year for video EEG monitoring.

The Neuropsychology Service of the NYU Comprehensive Epilepsy Center adheres to the Division 40 definition of a clinical neuropsychologist. The mission and goals of our fellowship are to provide advanced postdoctoral education and training in clinical neuropsychology with a special focus on epilepsy. Our center endorses the 'Scientist-Practitioner' model of training. Accordingly, we provide research and academic experiences in addition to clinical training. Our goal is to graduate fellows that will go on to seek board certification through ABPP/ABCN.

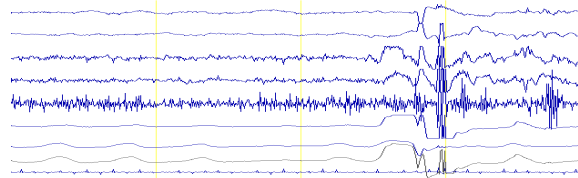
Fellows receive a stipend of \$34,000 yearly. In addition, our fellows are eligible for comprehensive and competitive benefits through the New York University Human Resources Department. Specific benefits include medical and dental insurance plans, life insurance and disability insurance, and retirement plans. Fellows are also given a travel budget to attend off-site national conferences such as INS, NAN, etc.

Clinical Services

The Fellows will primarily work with adults and children undergoing inpatient and outpatient work-ups for the characterization and localization of cerebral dysfunction associated with epilepsy. Clinical services include:

- Neuropsychological Assessment
- Intracarotid Amobarbital (i.e., Wada) Procedures
- Intra- and Extra- operative Brain Mappings

Additional inpatient and outpatient experiences with a wider range of neurological and/or psychiatric conditions are also included. Other populations include AD/HD and LD, stroke, dementia, TBI, etc. It is expected that the fellow will conduct approximately two full outpatient evaluations per week. Special procedures (i.e., Wada and mappings) occur at irregular intervals, but typically average one or two each week. Although our site is primarily an adult training site, pediatric experience of up to 1/3 of a fellow's time is available for interested candidates.



Research

A requirement of our fellowship program is that fellows complete an independent research project during their time at our facility. Fellows are encouraged to bring their own ideas and complete original data collection, but are also allowed access to the preexisting patient registry for use in retrospective analyses. It is expected that fellows present the findings of their research project at a national or international conference and ultimately submit their project for publication.

To facilitate the research conducted while on fellowship, fellows have access to all research facilities of New York University, including access to the medical library, with a comprehensive set of physical and electronic holdings.

Training Activities

Fellows at our center take part in a wide range of rounds and classes focusing on epilepsy and neurology more generally. Fellows observe and participate in weekly multidisciplinary meetings where staff review data for surgical candidates and discuss surgical approaches. Fellows also attend weekly journal club and research meetings and may attend Grand Rounds presentation in Neurology, Pediatric Neurology, and Psychiatry.

Also available are weekly lectures covering a broader range of neuropsychology topics. Topics typically include talks on functional neuroanatomy, dementia, brain tumors, movement disorders, pediatric neurologic disorders, etc. Moreover, to broaden the experience of the fellows, a weekly Neuropsychology Case Conference is held. Like the didactics described above, this opportunity involves not only Epilepsy Center faculty, but also draws on the expertise from other NYU facilities such as Bellevue Psychiatric Hospital, Rusk Institute of Rehabilitation, The Manhattan VA, and the NYU Child Study Center.

Faculty Supervisors at the NYU Comprehensive Epilepsy Center include:

William B. Barr, Ph.D., ABPP-CN
Director of Neuropsychology

William S. MacAllister, Ph.D., ABPP-CN
Pediatric Neuropsychologist

Chris Morrison, Ph.D., ABPP-CN
Adult Neuropsychologist

If you have questions about our program, please feel free to email Dr. Barr at William.barr@nyumc.org or visit our website at:

<http://www.med.nyu.edu/cec/programs/>