

The Department of Radiology Presents:

# 13th Annual NYU Radiology Alpine Imaging Symposium *in Deer Valley*

Provided by the NYU Post-Graduate Medical School

## General Information

### Target Audience

This course is designed for practicing clinical radiologists in academics or private practice.

### Course Description/Statement of Need

Radiologists must be aware of the changes and developments in all areas of radiology (MR, CT, US, X-ray) including Thoracic, Neuroradiology, Breast, Pediatric and Musculoskeletal imaging in order to maintain certification and optimize patient care. It is imperative that radiologists stay up-to-date on the latest imaging protocols and be aware of technological advances and how to incorporate them into their everyday practice. Several important topics to be covered include: state of the art imaging of the pituitary gland, imaging pediatric emergencies, Breast MRI, lung cancer screening and advanced imaging of the shoulder.

The essentials presented in this program are meant to be integrated into the participants' practice in an effort to improve their current knowledge, imaging skills and ultimately to improve patient care.

### Learning Objectives

After participating in this activity, clinicians should be able to:

- Describe imaging clues which can help distinguish and identify tumor mimics in order to eliminate the need for neurosurgical intervention.
- Develop a multi-modality approach to assessing patients with inflammatory arthritis for early detection and assessing response to therapy.
- Illustrate the appropriate use of US in breast imaging screening, as well as in the MRI directed examination.
- Describe the Fleischner Society's recommendations for the management of subsolid pulmonary nodules.

**March 16-20, 2015**

**The Chateaux at Silver Lake  
Deer Valley, UT**

### Registration Information

You may register for this meeting online or by completing the registration form on page 5.

### Accreditation Statement

The NYU Post-Graduate Medical School is accredited by the Accreditation Council for Continuing Medical Education to provide continuing medical education for physicians.

### Credit Designation Statement

The NYU Post-Graduate Medical School designates this live activity for a maximum of 22.5 AMA PRA Category 1 Credits™. Physicians should claim only the credit commensurate with the extent of their participation in the activity.

### Disclosure Statement

The NYU Post-Graduate Medical School adheres to ACCME accreditation requirements and policies, including the Standards for Commercial Support regarding industry support of continuing medical education. In order to resolve any identified Conflicts of Interest, disclosure information is provided during the planning process to ensure resolution of any identified conflicts. Disclosure of faculty and commercial relationships as well as the discussion of unlabeled or unapproved use of any drug, device or procedure by the faculty will be fully noted at the meeting.

### Special Needs

The Post-Graduate Medical School of the New York University School of Medicine, in compliance with the legal requirements of the Americans with Disabilities Act, requests that any participant of this CME course who is in need of accommodation, submit written requests to our office at least one month prior to the course start date.

# Schedule

13th Annual NYU Radiology Alpine Imaging Symposium in Deer Valley • March 16-20, 2015

## Sunday, March 15th

8:30am-10:00am & 5:30pm-6:30pm  
Registration & Lift Ticket Distribution

## Monday, March 16th

### Morning Session (Neuro & Breast)

6:45am Registration & Breakfast

7:10am Welcome  
Georgeann McGuinness, M.D., F.A.C.R.

7:15am SAM: NEURO PART I  
Brain Tumor Mimics:  
Know These Imaging Pearls  
Girish M. Fatterpekar, M.D.

8:00am Screening Mammography:  
No Controversies This Year!  
Benefits of the Gold Standard  
Hildegard K. Toth, M.D.

8:45am SAM: NEURO PART II  
Transverse Myelitis: Integrating the Clinical  
Picture with the Imaging Appearance  
Girish M. Fatterpekar, M.D.

9:30am Questions & Discussion

9:45am Adjourn

### Afternoon Session (Peds & MSK)

4:00pm Refreshments & Peds Cases of the Day

4:15pm Sonography of the Pediatric Outpatient:  
What the Clinician Needs to Know  
Lynne P. Pinkney, M.D.

5:00pm Radiologic Evaluation of Bone Tumors with  
Emphasis on MRI  
Murray K. Dalinka, M.D.

5:45pm Interesting Cases: Pediatric Imaging  
Lynne P. Pinkney, M.D.

6:15pm Questions & Discussion

6:30pm Adjourn

## Tuesday, March 17th

### Morning Session (Peds & Thoracic)

6:45am Breakfast

7:15am SAM: PEDIATRIC MUSCULOSKELETAL IMAGING PART I  
Traumatic and Sports Injuries  
Lynne P. Pinkney, M.D.

8:00am Lung Cancer Screening:  
Practical Considerations & Status Update  
Georgeann McGuinness, M.D., F.A.C.R.

8:45am SAM: PEDIATRIC MUSCULOSKELETAL IMAGING PART II  
Non-traumatic Conditions  
Lynne P. Pinkney, M.D.

9:30am Questions & Discussion

9:45am Adjourn

### Afternoon Session (Neuro & MSK)

4:00pm Refreshments & Neuro Cases of the Day

4:15pm Best in Practice: State-of-the-Art Imaging  
of the Pituitary Gland  
Girish M. Fatterpekar, M.D.

5:00pm Cervical Spine Trauma: MR & CT  
Murray K. Dalinka, M.D.

5:45pm Interesting Cases: Neuroradiology  
Girish M. Fatterpekar, M.D.

6:15pm Questions & Discussion

6:30pm Adjourn

## Wednesday, March 18th

### Morning Session (Breast & Peds)

6:45am Breakfast

7:15am You are the Doctor: Remember the Three "A's"  
Hildegard K. Toth, M.D.

8:00am Refresher of Common Pediatric Emergencies  
Lynne P. Pinkney, M.D.

8:45am You're on Call: Covering Contrast Injections  
Hildegard K. Toth, M.D.

9:30am Questions & Discussion

9:45am Adjourn

### Afternoon Session (MSK & Thoracic)

4:00pm Refreshments & Thoracic & MSK Cases of the Day

4:15pm Advanced Shoulder Imaging  
Ronald S. Adler, Ph.D., M.D.

5:00pm Interesting Cases: Thoracic Imaging  
Georgeann McGuinness, M.D., F.A.C.R.

5:45pm Interesting Cases: MSK Imaging  
Ronald S. Adler, Ph.D., M.D.

6:15pm Questions & Discussion

6:30pm Adjourn

## Thursday, March 19th

### Morning Session (MSK/PET)

6:45am Breakfast

7:15am SAM: MSK ULTRASOUND PART I  
General Concepts  
Ronald S. Adler, Ph.D., M.D.

8:00am Fibrosing & Non Fibrosing  
Interstitial Lung Diseases  
Georgeann McGuinness, M.D., F.A.C.R.

8:45am SAM: MSK ULTRASOUND PART II  
US of Lumps and Bumps with MR Correlation  
Ronald S. Adler, Ph.D., M.D.

9:30am Questions & Discussion

9:45am Adjourn

### Afternoon Session (Breast & Neuro)

4:00pm Refreshments & Breast Cases of the Day

4:15pm Breast MRI: Approach Review  
with Birads Lexicon Update  
Hildegard K. Toth, M.D.

5:00pm Head and Neck Emergencies:  
A Symptom Based Approach  
Girish M. Fatterpekar, M.D.

5:45pm Interesting Cases: Breast Imaging  
Hildegard K. Toth, M.D.

6:15pm Questions & Discussion

6:30pm Adjourn

## Friday, March 20th

### Morning Session (Thoracic & MSK)

6:45am Breakfast

7:15am SAM: HRCT PART I  
HRCT Lexicon and Signs:  
The Rosetta Stone to Crazy Paving  
Georgeann McGuinness, M.D., F.A.C.R.

8:00am Imaging of Arthritis: A Multimodality Approach  
Ronald S. Adler, Ph.D., M.D.

8:45am SAM: HRCT PART II  
HRCT: Tackling the Unknown Case  
Georgeann McGuinness, M.D., F.A.C.R.

9:30am Final Questions & Discussion

9:45am Adjourn

## NYU Course Director

**Georgeann McGuinness, M.D., F.A.C.R.**

Associate Dean for Mentoring and Professional Development  
Professor and Sr. Vice Chair of Radiology  
Vice Chair of Education & Academic Affairs  
Acting Section Chief, Thoracic Imaging  
Director, Clinical Faculty Mentoring  
NYULMC

## NYU Faculty

**Ronald S. Adler, Ph.D., M.D.**

Professor of Radiology

**Girish M. Fatterpekar, M.D.**

Associate Professor of Radiology

**Lynne P. Pinkney, M.D.**

Assistant Professor of Radiology

**Hildegard K. Toth, M.D.**

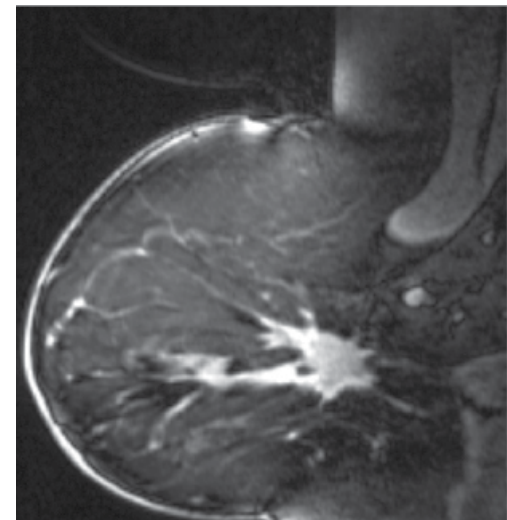
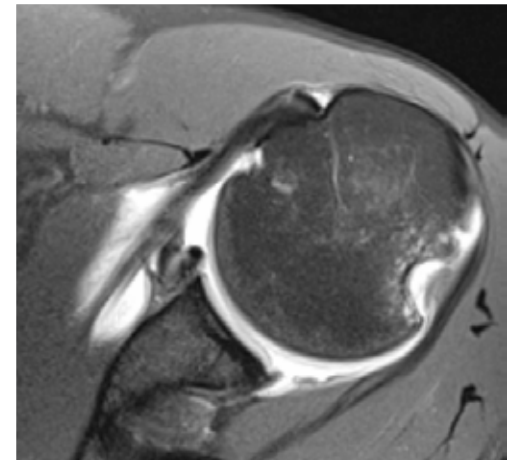
Associate Professor of Radiology

Chief, Breast Imaging

## Guest Faculty

**Murray K. Dalinka, M.D.**

Emeritus Professor of Radiology  
University of Pennsylvania  
School of Medicine  
Philadelphia, PA





## Hotel Information

### The Chateaux, Deer Valley

Now managed by the world-famous Stein Eriksen, The Chateaux at Silver Lake is an elegant Deer Valley hotel located in the heart of Deer Valley Resort's mid-mountain Silver Lake Village. The Chateaux offers quality amenities, as well as a variety of finely appointed and spacious room types including hotel rooms, studios, and multi-bedroom suites. Simply walk out the door of The Chateaux and you are just a few steps away from the beautiful slopes of Deer Valley Resort, with three mid-mountain chair lifts and all the resort services at Silver Lake Lodge. Or take a short complimentary shuttle ride to Park City's Historic Main Street for endless dining and shopping—just a few minutes from the hotel!

### About Deer Valley

Consistently ranked #1 in guest service among ski resorts in North America, as rated by the readers of SKI Magazine

Deer Valley is located in the charming and historic town of Park City, just 36 miles from the Salt Lake City International Airport via Interstate Highway. With hundreds of daily flights in and out of Salt Lake City International Airport, skiers can arrive at the airport by late morning, and be on the slopes at Deer Valley by early afternoon.

Deer Valley Resort revolutionized the ski industry by providing the first-class service one would receive at a five-star hotel. The resort offers 21 chairlifts, 101 ski runs, six bowls, 11 restaurants, 300 annual inches of powder, three elegant day lodges, 2,026 acres of alpine skiing, hundreds of luxury accommodations, award winning cuisines, a renowned Ski School and Children's Center and unsurpassed services and amenities.



## Hotel Reservations

To make a reservation, please call The Chateaux directly.

**Phone: 877-288-2978**

Attendees should mention they are booking rooms with the **NYU Radiology Symposium**

You may also email:

**reservations@the-chateaux.com**

## NYU Discounted Room Block

NYU attendees will receive incredibly discounted room rates at The Chateaux during peak season in Deer Valley.

**NYU Room Rates include daily breakfast buffet for 2 people in hotel room/studio and up to 4 people in a suite.** Any additional people will be charged \$13++ for daily buffet breakfast.

### Hotel Room: \$429

The hotel's standard rooms—whether containing two queens or a king—exceed standard expectations. Cozy stone fireplaces, jetted tubs (or stone-tiled showers), heated towel racks, crisp duvets and pillow-topped mattresses set the tone for a relaxing Deer Valley vacation. Since rooms have a small refrigerator, microwave and coffee pot (Starbucks beans included), there's ample space to make PB&Js for the trail. Flat-screens televisions, complimentary wireless internet, on-demand movies, and ipod/CD clocks round out the amenities.

### Studios: \$429 (available upon request)

Get cooking—or kick back in the sunshine. Every studio comes with a full kitchen and balcony. The friendly house-keeping team tucks away the plush, pillow-topped, queen-size Murphy bed during the day and sets it up, with an on-the-pillow chocolate, at turndown. From fireplaces and flat screens to heated towel racks and comfortable, tasteful furnishings, studios provide a luxurious basecamp for any Deer Valley vacation.

### One-Bedroom Suite: \$690

Each suite offers the combined features of a hotel room and a studio unit and features a fully equipped kitchen, living room and gas fireplace.

A Resort lodging fee of 5%, taxed at 10.45%, is also applicable.

The resort fee covers the following items:

- Wireless internet access in guest room and throughout the hotel for multiple devices
- Bellmen portorage fees
- Daily housekeeping gratuities
- Shuttle to and from the town of Park City
- Local calls
- Access to fitness center, pool and hot tub
- Underground Hotel Parking

### Hotel Deposit/Cancellation Policy

Payment of one night's room/tax must be provided upon making room reservations. Full payment of room/tax is required 45 days prior to arrival. Individual room cancellations outside of 45 days are subject to a \$100 service fee for each room reserved. Cancellation within 45 days of arrival will be subject to a forfeiture of the room/tax for the entire length of stay. Guests will be responsible for the entire length of stay should they reduce their number of nights in their existing reservation.

## Traveling to Deer Valley

Fly into Salt Lake City Airport (SLC) (approx 45 minutes from The Chateaux)

You may rent a car or schedule a shuttle.

**A car is not necessary as the hotel is in the heart of Deer Valley and minutes from Park City (the hotel offers complimentary shuttle rides to and from Park City).**

### Airport Shuttle

NYU has secured discounted rates with **Park City Transportation** from the airport to the hotel. Rates are \$35 per person for a shared shuttle. Please call **(800) 457-9457 ext 2** or go to the NYU website to make your reservation.



## Discounted Deer Valley Lift Tickets

The NYU Group will receive a substantial discount off public rates—over 20%! Please refer to the Ski Lift Ticket Order form on our website. Totally unused lift tickets are refundable minus a \$25 service fee until March 19, 2015, but once any portion is used, the remaining days cannot be refunded.

Please note that Snowboarding is not offered at Deer Valley Resort but is permissible at Park City Mountain Resort. We are also selling lift Tickets for the Park City Resort if you wish to explore that mountain one day.

Please visit NYU's website to download the ski lift ticket order form.

### Lift Ticket Rates

NUMBER OF DAYS	ADULT	CHILD (under 12)
Single day	\$90.00	\$72.00
2 day of 7	\$182.00	\$144.00
3 day of 7	\$249.00	\$186.00
4 day of 7	\$334.00	\$244.00
5 day of 7	\$405.00	\$295.00
6 day of 7	\$472.00	\$348.00

### Additional Special Rates

Please inquire about senior rates if you are age 65 or over, as well as passes for beginners

### Wild West Ticket

Valid on Burns and Snowflake chairlifts, Snow Park surface lifts, Silver Lake Express chairlift and Silver Lake surface lifts only

### Deer Valley Ski School

Whether you're a child or an adult, a top-level skier or an eager beginner, Deer Valley Resort Skier Services offers a great selection of specialty ski programs designed to improve skiers' skills, confidence, knowledge and overall enjoyment of the sport.

If you are interested in ski school, it is very important to book lessons in advance, as the ski school reaches capacity quickly!

**Lift tickets are not included with ski school products except Children's programs, those are priced inclusive of the lift ticket.**

The Skier Services Reservation office is available Mon–Fri from 8 a.m. to 5 p.m. MST at **888-754-8477** or **435-645-6648**. For more information or for reservation request forms, please visit [www.deervalley.com](http://www.deervalley.com)

Online Registration is fast & easy.  
Go to: [www.radcme.med.nyu.edu](http://www.radcme.med.nyu.edu)

## Registration Form

Please Print Clearly

NAME \_\_\_\_\_

ADDRESS \_\_\_\_\_

CITY \_\_\_\_\_ STATE \_\_\_\_\_ ZIP \_\_\_\_\_

DAY PHONE \_\_\_\_\_

FAX \_\_\_\_\_

EMAIL (required for course confirmation) \_\_\_\_\_

DEGREE \_\_\_\_\_ SPECIALTY \_\_\_\_\_

SUBSPECIALTY \_\_\_\_\_

DIETARY RESTRICTIONS (Please indicate any dietary restrictions on the registration form when you register.) \_\_\_\_\_

### Registration Fee Options

Please check appropriate boxes below

13th Annual NYU Radiology Alpine Imaging Symposium  
March 16–20, 2015

\$985 registration fee for physicians

\$785 discounted fee\*

#### Optional Printed Syllabus

\$40 additional fee

\* Discounted Fees apply to NYU School of Medicine alumni, M.D.s employed by the Dept. of Veterans Affairs, full-time active military personnel, technologists, current residents/fellows, Canadian and other non-US physicians.

### Methods of Payment

Check in U.S. Dollars made payable to **NYU Department of Radiology**

Credit Card Payment (see below)

### Payment by Credit Card

Bill to:  Visa  Mastercard  American Express

Card Member's Name (*print carefully*) \_\_\_\_\_

Card # \_\_\_\_\_

Exp Date: Month/Year \_\_\_\_\_ / \_\_\_\_\_

Amount to be Charged: \$ \_\_\_\_\_

Signature (*required to process*) \_\_\_\_\_

Fax Form to: (212) 263-3959

### If Sending Check, Please Mail to:

**Marisa Costello**  
Department of Radiology  
462 First Avenue  
OBH, C&D, Floor 1, Room 4  
New York, NY 10016

### Refund Policy:

If you need to cancel your enrollment, a \$75 service fee will be assessed for your tuition payment if written notice is received at least 30 days in advance and a \$150 service fee for cancellations made within 30 days. No refunds are possible if written notification is not sent.

### Course Cancellation Policy:

In the unusual circumstance that this course is cancelled, two weeks' notice will be provided and full tuition refunded. The NYU Post-Graduate Medical School is not responsible for any airfare, hotel or other costs incurred.

### Educational Needs

If there is a specific question or topic relating to this course, please submit it on the registration form or on the website when registering online.

\_\_\_\_\_  
\_\_\_\_\_

### In Case of Questions, Contact:

**Michelle R. Koplik**, Director of CME at (212) 263-3936  
or email: [michelle.koplik@nyumc.org](mailto:michelle.koplik@nyumc.org)

**Marisa Costello**, Program Manager at (212) 263-0724  
or email: [marisa.bruno@nyumc.org](mailto:marisa.bruno@nyumc.org)



We hope you'll plan on joining us at one of these CME courses.  
[WWW.RADCME.MED.NYU.EDU](http://WWW.RADCME.MED.NYU.EDU)



Non-Profit Organization  
U.S. Postage  
Permit #8167  
New York University

Department of Radiology  
462 First Avenue  
OBH, C&D, Floor 1, Room 4  
New York, NY 10016

## 2014

DEC. 15-19 **33RD ANNUAL HEAD TO TOE IMAGING CONFERENCE**  
THE NEW YORK HILTON MIDTOWN, NEW YORK, NY

## 2015

FEB. 2-6 **CLINICAL IMAGING SYMPOSIUM IN HUALALAI**  
FOUR SEASONS HUALALAI, KONA, HAWAII

MARCH 16-20 **13TH ANNUAL ALPINE IMAGING SYMPOSIUM**  
THE CHATEAUX, DEER VALLEY, UT

MAY 26-28 **2015 ADVANCED IMAGING OF JOINTS WITH  
AN EMPHASIS ON SPORTS INJURIES**  
NYU LANGONE MEDICAL CENTER, NEW YORK, NY

MAY 29 **HALF DAY HANDS-ON ULTRASOUND WORKSHOP 2015**  
NYU LANGONE MEDICAL CENTER, NEW YORK, NY

JUNE 22-26 **SUMMER RADIOLOGY SYMPOSIUM ON THE CAPE**  
THE WEQUASSETT RESORT, CHATHAM, MA

AUG. 3-7 **CLINICAL IMAGING SYMPOSIUM IN BERMUDE**  
THE FAIRMONT SOUTHAMPTON, BERMUDE

OCT. 19-23 **FALL RADIOLOGY SYMPOSIUM AT THE ENCHANTMENT**  
TENTATIVE  
ENCHANTMENT RESORT, SEDONA, AZ

## 13th Annual NYU Radiology Alpine Imaging Symposium *at Deer Valley • March 16-20, 2015*



The Department of Radiology Presents:

# 13th Annual NYU Radiology Alpine Imaging Symposium *in Deer Valley*

Provided by the NYU Post-Graduate Medical School

March 16-20, 2015  
The Chateaux at Silver Lake  
Deer Valley, UT

