

The logo consists of a purple circle containing the white text "NYU".

NYU

School of Medicine

SPONSORED BY

NYU POST-GRADUATE MEDICAL SCHOOL

The Department of Radiology Presents:

29TH ANNUAL MORTON A. BOSNIAK

Head to Toe

Imaging Conference

at the Hilton New York
December 13–18, 2010

Monday, Dec. 13	Thoracic Imaging & Cardiac Imaging
Tuesday, Dec. 14	Musculoskeletal Imaging & Pediatric Imaging
Wednesday, Dec. 15	Emergency Imaging & Interventional Radiology
Thursday, Dec. 16	Neuroradiology & PET/CT Imaging
Friday, Dec. 17	Abdominal Imaging & Breast Imaging
Saturday, Dec. 18	Women's Imaging



Participating Faculty

Head to Toe

The Post-Graduate Medical School of the New York University School of Medicine is committed to improving patient care through continuing medical education.

Program Director

Georgeann McGuinness, M.D., F.A.C.R.

Associate Program Directors

Genevieve L. Bennett, M.D. (Women's Imaging)
Mark P. Bernstein, M.D. (Emergency Imaging)
Hearns W. Charles, M.D. (Interventional)
Nancy R. Fefferman, M.D. (Pediatric Imaging)
Jill E. Jacobs, M.D. (Cardiac Imaging)

Bidyut K. Pramanik, M.D. (Neuroradiology)
Michael Macari, M.D. (Abdominal Imaging)
Georgeann McGuinness, M.D., F.A.C.R. (Thoracic Imaging)
Sandra L. Moore, M.D. (Musculoskeletal Imaging)
Karen A. Mourtzikos, M.D. (PET/CT Imaging)
Hildegard K. Toth, M.D. (Breast Imaging)

Guest Faculty

Susanna I. Lee, M.D., Ph.D.

Chief of Women's Imaging
Massachusetts General Hospital
Assistant Professor of Radiology
Harvard Medical School
Boston, MA

Laurie A. Loevner, M.D.

Professor of Radiology,
Otorhinolaryngology: Head & Neck
Surgery, and Neurosurgery
Director of Head and Neck Imaging
University of Pennsylvania
Health Systems
Philadelphia, PA

David A. Lynch, M.D.

Professor of Radiology
National Jewish Hospital
Denver, CO

William E. Palmer, M.D.

Director, Musculoskeletal Imaging
and Intervention Division
Massachusetts General Hospital
Assistant Professor of Radiology
Harvard Medical School
Boston, MA

Jorge A. Soto, M.D.

Professor of Radiology
Vice-Chairman of Radiology
Boston University
School of Medicine
Boston, MA

NYU Radiology Faculty

Theresa A. Aquino, M.D.

Assistant Professor of Radiology

Leon Axel, Ph.D., M.D.

Professor of Radiology, Medicine
and Physiology & Neuroscience

Alexander B. Baxter, M.D.

Assistant Professor of Radiology

Luis Beltran, M.D.

Assistant Professor of Radiology

Jenny T. Bencardino, M.D.

Associate Professor of Radiology

Genevieve L. Bennett, M.D.

Assistant Professor of Radiology
Chief, Women's Imaging

Mark P. Bernstein, M.D.

Assistant Professor of Radiology

John A. Bonavita

Assistant Professor of Radiology
Associate Chair for Strategic
Development

Morton A. Bosniak, M.D.

Professor Emeritus of Radiology

Hillel B. Bryk, M.D.

Assistant Professor of Radiology

Hersh Chandarana, M.D.

Assistant Professor of Radiology

Gregory Chang, M.D.

Assistant Professor of Radiology

Hearns W. Charles, M.D.

Assistant Professor of Radiology

Kyunghee C. Cho, M.D., F.A.C.R.

Professor of Radiology

Gina A. Ciavarra, M.D.

Assistant Professor of Radiology

Adam Davis, M.D.

Assistant Professor of Radiology

John Fantauzzi, M.D.

Assistant Professor of Radiology

Nancy R. Fefferman, M.D.

Assistant Professor of Radiology
Chief, Pediatric Radiology

Kent P. Friedman, M.D.

Assistant Professor of Radiology
Chief, Nuclear Medicine

Ajax E. George, M.D.

Professor of Radiology

Jonathan Gross, M.D.

Assistant Professor of Radiology

Soterios Gyftopoulos, M.D.

Assistant Professor of Radiology

Mari Hagiwara, M.D.

Assistant Professor of Radiology

Nicole Hindman, M.D.

Assistant Professor of Radiology

Gwendolyn C. Hotson, M.D.

Associate Professor of Radiology

Jill E. Jacobs, M.D.

Associate Professor of Radiology
Interim Chief, Cardiac Imaging

Danny C. Kim, M.D.

Assistant Professor of Radiology

Sooah Kim, M.D.

Assistant Professor of Radiology

Jane P. Ko, M.D.

Associate Professor of Radiology

Chi Wan Koo, M.D.

Assistant Professor of Radiology

Sandor Kovacs, M.D.

Assistant Professor of Radiology

Shailee Lala, M.D.

Assistant Professor of Radiology

Jiyon Lee, M.D.

Assistant Professor of Radiology

Vivian S. Lee, M.D., Ph.D., M.B.A.

Professor of Radiology and
Physiology & Neuroscience
Vice Dean for Science,
Chief Scientific Officer

Richard Lefleur, M.D.

Associate Professor of Radiology

Barry S. Leitman, M.D., F.A.C.R.

Professor of Radiology
Chief, Thoracic Imaging

Ruth P. Lim, M.D.

Assistant Professor of Radiology

John Loh, M.D.

Assistant Professor of Radiology

Michael Macari, M.D.

Associate Professor of Radiology
Chief, Abdominal Imaging
Vice Chair of Operations

Amy Malsaether, M.D.

Assistant Professor of Radiology

Derek Mason, M.D.

Assistant Professor of Radiology

Georgeann McGuinness, M.D., F.A.C.R.

Professor of Radiology
Vice Chair, Education &
Academic Affairs

Michael B. Mechlin, M.D.

Assistant Professor of Radiology

Alec J. Megibow, M.D., M.P.H., F.A.C.R.

Professor of Radiology
Director, Faculty Practice Radiology

Cecilia L. Mercado, M.D.

Assistant Professor of Radiology

Robin J. Mitnick, M.D.

Assistant Professor of Radiology

Sandra L. Moore, M.D.

Assistant Professor of Radiology

Karen A. Mourtzikos, M.D.

Assistant Professor of Radiology

Linda Moy, M.D.

Assistant Professor of Radiology

David P. Naidich, M.D.

Professor of Radiology
& Medicine

Annette O. Nusbaum, M.D.

Assistant Professor of Radiology

Catherine N. Petchprapa, M.D.

Assistant Professor of Radiology

Lynne P. Pinkney, M.D.

Assistant Professor of Radiology

Fabio Ponzio, M.D.

Assistant Professor of Radiology

Bidyut K. Pramanik, M.D.

Assistant Professor of Radiology

Michael P. Recht, M.D.

Louis Marx Professor and
Chairman of Radiology

Rafael Rivera, M.D.

Assistant Professor of Radiology

Zehava Sadka Rosenberg, M.D.

Professor of Radiology &
Orthopaedic Surgery

Andrew Rosenkrantz, M.D.

Assistant Professor of Radiology

Leon D. Rybak, M.D.

Assistant Professor of Radiology
Acting Chief,
Musculoskeletal Imaging

Andrea Seltzer, M.D.

Assistant Professor of Radiology

Sara Shaylor, M.D.

Assistant Professor of Radiology

Maria C. Shiao, M.D.

Assistant Professor of Radiology

Chrystia M. Slywotzky, M.D.

Assistant Professor of Radiology

M. Barbara Srichai-Parsia, M.D.

Assistant Professor of Radiology
& Medicine

Hildegard K. Toth, M.D.

Associate Professor of Radiology
Chief, Breast Imaging

Renata La Rocca Vieira, M.D.

Assistant Professor of Radiology

Maj L. Wickstrom, M.D.

Assistant Professor of Radiology

Joseph M. Yee, M.D.

Associate Professor of Radiology

Imaging Conference Overview



ALL BROCHURE PHOTOS ARE COURTESY OF ERIC J. STERN, M.D.

Target Audience

The program is designed for clinical radiologists in either general or specialized practice, and is appropriate for radiologists in training. Familiarity with the fundamentals of CT, MR, PET, and US technology and applications, as well as basic anatomy, is assumed.

Statement of Need/ Course Description

The 29th Annual "Morton A. Bosniak Head to Toe Imaging Conference" offers an intensive 5 1/2 day program reviewing Neurologic, Musculoskeletal, Pediatric, Abdominal, Thoracic, Cardiac, Breast, Women's, Trauma, PET/CT and Interventional Radiology. Due to the tremendous growth of the field of radiology, it is imperative for practicing radiologists to continually update their skills and gain exposure to advances in the field. Maintenance of certification requires continued review and adoption of essential and cutting edge imaging techniques in all modalities, covering the entire body. In addition, comparative effectiveness research, as it applies to imaging, will be incorporated throughout the course, allowing immediate application to clinical practice. An innovative feature of this

NEW THIS YEAR – SAMS!
Self Assessment Modules (SAMS), allowing registrants to gain ABR SAM's credit, will be offered throughout the week at no additional charge.

course is that individual sections of the program can be attended on a daily basis, allowing course content to be tailored to the unique interests and requirements of each registrant. The purpose of this course is to provide the registrant with an overview of state-of-the-art imaging methods as they pertain to clinical practice, and to introduce advances in the field in terms of imaging technology and disease diagnosis and management.

The course is designed to examine the practical aspects of established CT, MRI, US, and PET techniques, as well as to introduce new techniques and applications for these modalities. Plenary sessions and workshops have been structured to review pathologic processes and image interpretation, and to update the registrant on advanced applications and image analysis.

Educational Objectives

- Incorporate strategies for accurate assessment and application of updated protocols for imaging within radiology sub sections (Abdominal, Musculoskeletal, Neurologic, Thoracic, Cardiac, Breast, Women's, PET/CT, Emergency Medicine, Interventional) applying sub specialty expertise.
- Evaluate and apply the most up-to-date imaging protocols that will yield the best images at the lowest possible radiation dose for CT studies (including Abdominal, Thoracic, Cardiac and Pediatrics).
- Plan and protocol the most comprehensive and informative MR studies in the shortest imaging times.
- Recognize image artifacts in all areas of radiology and understand their technical and patient related causes, and how to minimize them.

Course Format

The course runs for 5 1/2 days, with a combination of didactic lectures and interactive workshops on most days. **Pre-registration for workshops is not required.** Attendance of the entire course will provide a comprehensive imaging review, including advanced and cutting edge techniques. Registrants may choose to enroll in any combination of individual course days, thereby creating a unique course content tailored to an individual's distinct interests.

Day 1: **THORACIC IMAGING & CARDIAC IMAGING**

Day 2: **MUSCULOSKELETAL IMAGING & PEDIATRIC IMAGING**

Day 3: **EMERGENCY IMAGING & INTERVENTIONAL RADIOLOGY**

Day 4: **NEURORADIOLOGY & PET/CT IMAGING**

Day 5: **ABDOMINAL IMAGING & BREAST IMAGING**

Day 6: **WOMEN'S IMAGING**



General Information



Conference Location

Hilton New York
1335 Avenue of the Americas (53rd Street)
New York City

Telephone for Reservations: 1-800-HILTONS

Telephone in New York: 212-586-7000

Group Name: NYU Head to Toe
Imaging Conference

Group Rates: \$283 (single or double)
plus taxes

Hilton New York

The Hilton New York is a sophisticated hotel conveniently located in the midst of business and media centers in New York City, at West 53rd Street and Avenue of the Americas (Sixth Avenue).

Hilton New York hotel guestrooms are spacious and stylish with a comfortable work area, high-speed internet access (wired and wireless), multiple-line phones, voicemail and data port, alarm clock radio with MP3 connection and complimentary newspaper Monday through Friday. All guest rooms feature marble baths, in-room thermostat control, 27 inch television, on-demand entertainment including video games, refreshment center, and coffeemaker.

The hotel offers a Fitness Club and Spa on the fifth floor of the hotel. We think you'll enjoy the location of the Hilton for the Broadway theatre district, 5th Avenue shopping and major museums.



NYU Room Block and Rates

Our room block begins Saturday, December 11th and concludes on Sunday, December 19th.

Our NYU Group Rates are **\$283** per night (single or double) plus applicable taxes. Please reserve your room early (as our block could sell out quickly) but the official cut-off date is **November 11, 2010**.

To reserve your room, call 1-800-HILTONS and indicate that you are part of the NYU Head to Toe Group or, even easier, go to the NYU Radiology Website (www.radcme.med.nyu.edu) and then click on the Hilton New York link to reserve your room online.

Registration Procedure

Registration fees are found on the Registration Form at the back of this brochure. You may sign up for the entire 5½ days or you may register on a daily basis (but half-day rates are not possible). The easiest way to register is online by going to www.radcme.med.nyu.edu. Please be sure to provide your email address to receive a confirmation/receipt. If you need to submit a check, please mail the registration form and check to our offices.

Accreditation Statement

The NYU Post-Graduate Medical School is accredited by the Accreditation Council for Continuing Medical Education to provide continuing medical education for physicians.

Tour of Contemporary Art Galleries in Chelsea • (Tues. & Thur. Mornings)

West Chelsea is the center of the international Contemporary Art scene. Jill Nathanson, artist and guide, will lead a walking tour of important current exhibitions. We will visit a range of galleries to view shows ranging from the outrageous to the beautiful. Tours will integrate art lovers, collectors and the artistically curious into a walking conversation.

(Dress warmly, wear comfortable shoes and meet at the NYU Meeting Registration Desk at 9:15 a.m.; departure at 9:45 a.m. You will be back in time for lunch. Cost per person is \$35, plus the cost of sharing a cab; min 4 persons/max of 20. Register in advance on the Registration Form or on-line.)

Credit Designation Statement

The NYU Post-Graduate Medical School designates this educational activity for a maximum of **42.25 AMA PRA Category 1 Credits™**. Physicians should only claim credit commensurate with the extent of their participation in the activity.

Daily Credits

MONDAY (Thoracic Imaging & Cardiac Imaging):

7.50 Category I Credits

TUESDAY (Musculoskeletal Imaging & Pediatric Imaging):

7.75 Category I Credits

WEDNESDAY (Emergency Imaging & Interventional Radiology):

7.25 Category I Credits

THURSDAY (Neuroradiology & PET/CT Imaging):

7.50 Category I Credits

FRIDAY (Abdominal Imaging & Breast Imaging):

7.75 Category I Credits

SATURDAY (Women's Imaging):

4.50 Category I Credits

Mammography Credits

Lectures and workshops on 12/17 fulfill a total of 1.5 breast imaging credits applicable to the MQSA accreditation requirements. The breakdown of credits for the lectures only are as follows:

DIGITAL MAMMOGRAPHY 1.00 hrs

BREAST MRI 0.25 hrs

BREAST US 0.25 hrs

Self-Assessment Module (SAM)

New this year! Self Assessment Modules (SAMs), allowing registrants to gain ABR SAM's credit, will be offered throughout the week at no additional charge.

Disclosure Statement

The NYU Post-Graduate Medical School adheres to ACCME Essential Areas and Policies, including the Standards for Commercial Support regarding industry support of continuing medical education. In order to resolve any identified conflicts of interest, disclosure information is provided during the planning process to ensure resolution of any identified conflicts. Disclosure of faculty and commercial relationships as well as the discussion of off-label or investigational use of any drug, device or procedure by the faculty or procedure by the faculty will be fully noted at the meeting.

AHRA CE Credits

Category A CE Credits are pending approval by the AHRA.

Special Needs

The Post-Graduate Medical School of the New York University School of Medicine, in compliance with the legal requirements of the Americans with Disabilities Act, requests any participant of this CME course who is in need of accommodation to submit written requests to our office at least one month prior to the course date.

Dietary Restrictions

Please indicate any dietary restrictions on the registration form or online form.

Special Topics/Questions

If there is a specific topic or question that would help fulfill your educational needs, please submit it on the registration form or online form.

Head to Toe Imaging

Program Information

SUNDAY, DECEMBER 12, 2010

4:00– **Registration** (Hilton, New York)
6:00

MONDAY, DECEMBER 13, 2010

THORACIC IMAGING

- 6:45 **Registration & Breakfast**
- 7:35 **Introduction & Greeting**
Georgeann McGuinness, M.D., F.A.C.R.
- 7:40 **Welcome**
Georgeann McGuinness, M.D., F.A.C.R.
- 7:45 **IMAGING THE SUB SOLID NODULE**
David P. Naidich, M.D.
- 8:20 **IMAGING OF AIRWAY DISEASE**
David A. Lynch, M.D.
- 8:55 **LUNG CANCER STAGING**
Jane P. Ko, M.D.
- 9:30 **IMAGING PE IN PREGNANCY**
Maria C. Shiau, M.D.
- 10:00 **Questions & Discussion**
- 10:15 **Coffee Break**
- 10:30 **DIFFUSE NODULAR DISEASE: A DIFFERENTIAL ALGORITHM**
David P. Naidich, M.D.
- 11:05 **INTERSTITIAL DISEASE OF UNKNOWN ETIOLOGY**
Georgeann McGuinness, M.D., F.A.C.R.
- 11:40 **IMAGING THE PATIENT WITH COLLAGEN VASCULAR DISEASE**
David A. Lynch, M.D.
- 12:15 **Questions & Discussion**
- 12:30 **Lunch**

CARDIAC IMAGING

- 1:40 **Welcome**
Jill E. Jacobs, M.D.
- 1:45 **AND THE BEAT GOES ON: THE CURRENT STATUS OF CCTA**
Jill E. Jacobs, M.D.
- 2:15 **STREAMLINING COMMON CARDIAC MRI PROTOCOLS**
Ruth P. Lim, M.D.
- 2:45 **CARDIAC MRI: IS IT WORTH THE INVESTMENT?**
M. Barbara Srichai-Parsia, M.D.
- 3:15 **Coffee Break**

WORKSHOPS: Thoracic & Cardiac

- 3:30 **Workshop #1**
 - A. SAMS: ESSENTIALS OF IMAGING ACUTE AND POST OPERATIVE THORACIC AORTIC DISEASE**
(SAM workshop will run for 90 min)
Jane P. Ko, M.D. & Georgeann McGuinness, M.D., F.A.C.R.
 - B. IMAGING OF CYSTIC LUNG DISEASE**
Maj L. Wickstrom, M.D.
 - C. INTERESTING CARDIAC CT & MRI CASES**
John Fantauzzi, M.D.
 - D. CORONARY CTA: HOW WE DO IT.**
PATIENT SELECTION, METHODS & RADIATION DOSE
Derek Mason, M.D.
 - E. NEUROENDOCRINE PATHOLOGY IN THE CHEST**
Chi Wan Koo, M.D.
 - F. CHEST IMAGING IN THE ICU: FROM THE MUNDANE TO THE ARCANE**
Barry S. Leitman, M.D., F.A.C.R.
- 4:15 **Workshop #2**
 - A. CONTINUATION OF SAMS: ESSENTIALS OF IMAGING ACUTE & POST OPERATIVE THORACIC AORTIC DISEASE**
Jane P. Ko, M.D. & Georgeann McGuinness, M.D., F.A.C.R.
 - B. IMAGING OF MEDIASTINAL MASSES**
Maj L. Wickstrom, M.D.
 - C. IMAGING CHEST TRAUMA**
John Fantauzzi, M.D.
 - D. INCIDENTAL FINDINGS & "INCIDENTALOMAS" ON CHEST CT**
Derek Mason, M.D.
 - E. APPROACH TO CARDIOVASCULAR DISEASES ON CHEST X-RAY**
Chi Wan Koo, M.D.
 - F. MRI EVALUATION OF CARDIAC PERFUSION**
Leon Axel, Ph.D., M.D.

5:00 **Adjournment**

TUESDAY, DECEMBER 14, 2010

MUSCULOSKELETAL IMAGING

- 7:00 **Registration & Breakfast**
- 7:40 **Welcome**
Sandra L. Moore, M.D.
- 7:45 **FOCUS SESSION ON ANKLE: SPRING LIGAMENT, MEDIAL ARCH & LISFRANC**
Zehava Sadka Rosenberg, M.D.
- 8:15 **FOCUS SESSION ON THE GLENOID LABRUM: BEATING PITFALLS AND DIAGNOSING CONFIDENTLY**
Jenny T. Bencardino, M.D.
- 8:45 **FOCUS SESSION ON THE HIP: ACETABULAR LABRUM AND FAI**
Michael P. Recht, M.D.
- 9:15 **STRESS BONE LESIONS**
William E. Palmer, M.D.
- 9:45 **Questions & Discussion**
- 10:00 **Coffee Break**
- 10:15 **FOCUS SESSION ON WRIST/HAND (DISLOCATION CASCADE, COLLATERAL LIGAMENTS)**
Catherine N. Petchprapa, M.D.
- 10:45 **3T IMAGING: HOW TO GET YOUR MAGNET UP TO ITS PROMISE IN MSK IMAGING**
William E. Palmer, M.D.
- 11:30 **MARROW IMAGING: HOW TO NAVIGATE DIFFICULT CASES**
Sandra L. Moore, M.D.
- 12:00 **SOFT TISSUE TUMORS: BEATING PITFALLS AND DIAGNOSING CONFIDENTLY**
Leon D. Rybak, M.D.
- 12:30 **Questions & Discussion**
- 12:45 **Lunch**

PEDIATRIC IMAGING

- 1:40 **Welcome**
Nancy R. Fefferman, M.D.
- 1:45 **PEDIATRIC MSK IMAGING PRIMER**
Lynne P. Pinkney, M.D.
- 2:15 **MRI OF PEDIATRIC VASCULAR MALFORMATIONS**
Rafael Rivera, M.D.
- 2:45 **CT PEDIATRIC EMERGENCIES**
Nancy R. Fefferman, M.D.
- 3:15 **Coffee Break**

WORKSHOPS: Musculoskeletal & Pediatric

- 3:30 **Workshop #1**
 - A. ROTATOR CUFF: PEARLS AND PITFALLS**
Soterios Gyftopolis, M.D.
 - B. MEDIAL AND LATERAL CORNERS OF THE KNEE: PEARLS AND PITFALLS**
Luis Beltran, M.D.
 - C. MUSCLE: CONFIDENT DIAGNOSIS AND LOOK-ALIKES**
Michael B. Mechlin, M.D.
 - D. NEW MSK PULSE SEQUENCES**
Renata La Rocca Vieira, M.D.
 - E. SAMS: PEDIATRIC EMERGENCY ULTRASOUND & PEDIATRIC SPINE, HIP AND HEAD ULTRASOUND**
(SAM workshop will run for 90 min)
Nancy R. Fefferman, M.D. & Shailee Lala, M.D.
- 4:15 **Workshop #2**
 - A. ROTATOR CUFF: PEARLS AND PITFALLS**
Soterios Gyftopolis, M.D.
 - B. MEDIAL AND LATERAL CORNERS OF THE KNEE: PEARLS AND PITFALLS**
Luis Beltran, M.D.
 - C. CASE REVIEW: ELBOW AND WRIST**
Gregory Chang, M.D.
 - D. MSK ULTRASOUND**
Gina A. Ciavarrá, M.D.
 - E. CONTINUATION OF SAMS: PEDIATRIC EMERGENCY ULTRASOUND & PEDIATRIC SPINE, HIP AND HEAD ULTRASOUND**
Nancy R. Fefferman, M.D. & Shailee Lala, M.D.

5:00 **Adjournment**

WEDNESDAY, DECEMBER 15, 2010

EMERGENCY IMAGING

- 7:00 **Registration & Breakfast**
- 7:45 **Welcome**
Mark P. Bernstein, M.D.
- 7:50 **HEAD & NECK EMERGENCIES I**
Alexander Baxter, M.D.
- 8:20 **MDCT OF MAXILLOFACIAL TRAUMA**
Mark P. Bernstein, M.D.
- 9:05 **HEAD & NECK EMERGENCIES II**
Alexander Baxter, M.D.
- 9:35 **Questions & Discussion**
- 9:50 **Coffee Break**
- 10:05 **SAMS PART I: CTA PELVIC TRAUMA**
Jorge A. Soto, M.D.
- 10:35 **SAMS PART II: MDCT MULTITRAUMA IMAGING**
Mark P. Bernstein, M.D.
- 11:05 **SAMS PART III: PANCREATIC & DUODENAL TRAUMA**
Jorge A. Soto, M.D.
- 11:35 **Questions & Discussion**
- 12:00 **Lunch**

INTERVENTIONAL RADIOLOGY

- 1:40 **Welcome**
Hearns W. Charles, M.D.
- 1:45 **PERCUTANEOUS BIOPSY: ABDOMEN—METHODS AND PRINCIPLES**
Jonathan Gross, M.D.
- 2:15 **THERMAL ABLATION: RFA, CRYO, MWA, IRE...**
Teresa A. Aquino, M.D.
- 2:45 **PERCUTANEOUS TREATMENT OF GASTROESOPHAGEAL VARICES**
Hearns W. Charles, M.D.
- 3:15 **Coffee Break**

WORKSHOPS: Emergency & Interventional

- 3:30 **Workshop #1**
 - A. THERMAL ABLATION IMAGING**
Teresa A. Aquino, M.D.
 - B. SOLID ORGAN DRAINAGE: TOOLS OF THE TRADE**
Richard Lefleur, M.D. and Hillel B. Bryk, M.D.
 - C. PERCUTANEOUS BIOPSY: LESIONS—INTERACTIVE CASE ILLUSTRATIONS**
Sandor Kovacs, M.D.
 - D. EASILY MISSED TL-SPINE INJURIES**
Mark P. Bernstein, M.D.
 - E. ABDOMINAL TRAUMA/ER CASES**
Jorge A. Soto, M.D.
- 4:15 **Workshop #2**
 - A. ABSCESS DRAINAGE: 10 PRINCIPLES**
Hearns W. Charles, M.D.
 - B. UTERINE FIBROID IMAGING WITH RESPECT TO EMBOLIZATION**
Hillel B. Bryk, M.D.
 - C. PEDIATRIC IR PROCEDURES**
Jonathan Gross, M.D.
 - D. EASILY MISSED TL: SPINE INJURIES**
Mark P. Bernstein, M.D.
 - E. ABDOMINAL TRAUMA/ER CASES**
Jorge A. Soto, M.D.

5:00 **Adjournment**

ing Conference

THURSDAY, DECEMBER 16, 2010

NEURORADIOLOGY

- 7:00 **Registration & Breakfast**
- 7:40 **Welcome**
Bidyut K. Pramanik, M.D.
- 7:45 **ADVANCED CT IN ACUTE STROKE**
Bidyut K. Pramanik, M.D.
- 8:15 **NEUROVASCULAR CTA**
Adam Davis, M.D.
- 8:45 **THE IRVIN KRICHEFF LECTURE**
SKULL BASE NEOPLASIA AND PATTERNS OF TUMOR SPREAD: ANATOMY AND FACES OF PATHOLOGY
Laurie A. Loevner, M.D.
- 9:45 **Questions & Discussion**
- 10:00 **Coffee Break**
- 10:15 **IMAGING OF CRANIAL NERVES**
Mari Hagiwara, M.D.
- 10:45 **EXTRAMUCOSAL SPACES OF THE HEAD AND NECK: WHAT EVERY RADIOLOGIST NEEDS TO KNOW**
Laurie A. Loevner, M.D.
- 11:15 **WHITE MATTER DISEASE**
Annette O. Nusbaum, M.D.
- 11:45 **NORMAL PRESSURE HYDROCEPHALUS**
Ajax E. George, M.D.
- 12:15 **Questions & Discussion**
- 12:30 **Lunch**

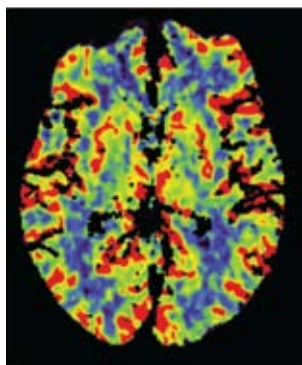
PET/CT

- 1:40 **Welcome**
Karen A. Mourtzikos, M.D.
- 1:45 **PET/CT AND MELANOMA**
Kent P. Friedman, M.D.
- 2:15 **PET/CT EVALUATION OF PULMONARY NODULES**
Karen A. Mourtzikos, M.D.
- 2:45 **PRACTICAL PET/CT PHYSICS AND QUALITY CONTROL**
Karen A. Mourtzikos, M.D.
- 3:15 **Coffee Break**

WORKSHOPS: Neuroradiology & PET/CT

- 3:30 **Workshop #1**
- A. UNUSUAL SPINE CASES**
Gwendolyn C. Hotson, M.D.
 - B. DIFFUSION IMAGING**
John Loh, M.D.
 - C. NEURORADIOLOGY CASE REVIEW**
Robin J. Mitnick, M.D.
 - D. PITFALLS AND ARTIFACTS OF PET/CT**
Fabio Ponzo, M.D.
 - E. INTERESTING PET/CT CASES**
Alexandra Seltzer, M.D.
- 4:15 **Workshop #2**
REPEAT OF WORKSHOP #1

5:00 **Adjournment**



FRIDAY, DECEMBER 17, 2010

ABDOMINAL IMAGING

- 7:00 **Registration & Breakfast**
- 7:40 **Welcome**
Michael Macari, M.D.
- 7:45 **A PRACTICAL APPROACH TO THE ABNORMAL SMALL BOWEL**
Michael Macari, M.D.
- 8:15 **PROSTATE MRI**
Andrew Rosenkrantz, M.D.
- 8:40 **EVALUATION AND WORK-UP OF CHALLENGING FOCAL LIVER MASSES**
Nicole Hindman, M.D.
- 9:05 **NON-ADNEXAL CYSTIC LESIONS IN THE PELVIS: CLUES TO THE DIFFERENTIAL DIAGNOSIS**
Hersh Chandarana, M.D.
- 9:25 **THE MORTON A. BOSNIAK LECTURE**
HOW GREAT IVPs BECAME SUPERB MDCT UROGRAMS
Alec J. Megibow, M.D., M.P.H., F.A.C.R.
- 9:55 **Questions & Discussion**
- 10:10 **Coffee Break**
- 10:25 **US OF THE THYROID: WHAT TO BIOPSY**
John A. Bonavita, M.D.
- 10:45 **RENAL MRI: FORM TO FUNCTION**
Vivian S. Lee, M.D., Ph.D., M.B.A.
- 11:05 **PRACTICAL MRA TECHNIQUES**
Ruth P. Lim, M.D.
- 11:25 **UNUSUAL CAUSES OF ABDOMINAL PAIN**
Michael Macari, M.D.
- 11:45 **HOW TO HANDLE THE INCIDENTAL PANCREATIC CYST**
Alec J. Megibow, M.D., M.P.H., F.A.C.R.
- 12:05 **THE POST-OP ABDOMEN: CT EVALUATION**
Nicole Hindman, M.D.
- 12:25 **Questions & Discussion**
- 12:35 **Lunch**

BREAST IMAGING

- 1:40 **Welcome**
Hildegard K. Toth, M.D.
- 1:45 **HOW BREAST MRI HAS CHANGED OUR PRACTICE: WHAT HAVE WE LEARNED?**
Linda Moy, M.D.
- 2:15 **MRI OF DCIS**
Cecilia L. Mercado, M.D.
- 2:45 **SCREENING MAMMOGRAPHY: WHERE IT'S AT.**
Hildegard K. Toth, M.D.
- 3:15 **Coffee Break**

WORKSHOPS: Abdominal & Breast

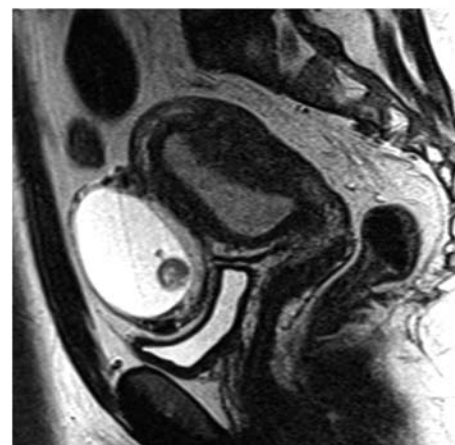
- 3:30 **Workshop #1**
- A. SCROTAL MRI AND US: PEARLS AND PITFALLS**
Danny C. Kim, M.D. & John A. Bonavita, M.D.
 - B. BILIARY TRACT DISEASE: CT AND MRI**
Sooah Kim, M.D.
 - C. EVALUATION OF DIFFICULT RENAL MASS LESIONS**
Morton A. Bosniak M.D. & Nicole Hindman, M.D.
 - D. SAM: ADVANCED ABDOMINAL MRI TECHNIQUES**
(SAM workshop will run for 90 min)
Hersh Chandarana, M.D. & Andrew Rosenkrantz, M.D.
 - E. PERCUTANEOUS BREAST INTERVENTIONS: TECHNIQUES AND CONSIDERATIONS**
Jiyon Lee, M.D.
 - F. MULTIMODALITY BREAST IMAGING: CHALLENGING CASES ON MAMMOGRAPHY, ULTRASOUND AND MRI**
Linda Moy, M.D.
- 4:15 **Workshop #2**
- A. IMAGING OF THE SPLEEN: PEARLS AND PITFALLS**
Kyunghye C. Cho, M.D., F.A.C.R.
 - B. INTERESTING US CASES WITH CT/MRI CORRELATIONS**
Chrystia M. Slywotzky, M.D. & Joseph M. Yee, M.D.
 - C. ADRENAL IMAGING**
Danny C. Kim, M.D. & Ruth P. Lim, M.D.
 - D. CONTINUATION OF SAM: ADVANCED ABDOMINAL MRI TECHNIQUES**
Hersh Chandarana & Andrew Rosenkrantz, M.D.
 - E. BI-RADS 3 LESIONS ON MRI: EXAMPLES & OUTCOMES**
Amy Malsaeher, M.D.
 - F. RSNA UPDATE**
Sara Shaylor, M.D.

5:00 **Adjournment**

SATURDAY, DECEMBER 18, 2010

WOMEN'S IMAGING

- 7:00 **Registration & Breakfast**
- 7:40 **Welcome**
Genevieve L. Bennett, M.D.
- 7:45 **MDCT EVALUATION OF THE FEMALE PELVIS: MAKING A MORE SPECIFIC DIAGNOSIS**
Genevieve L. Bennett, M.D.
- 8:25 **HOT TOPICS IN MRI: EVALUATION OF BENIGN FEMALE PELVIC DISORDERS**
Nicole Hindman, M.D.
- 9:05 **MRI & PET/CT OF GYNECOLOGIC CANCER IMAGING: WHAT THE RADIOLOGIST NEEDS TO KNOW**
Susanna I. Lee, M.D., Ph.D.
- 9:45 **Questions**
- 10:00 **Coffee Break**
- 10:15 **ECTOPIC PREGNANCY: CHALLENGES AND PITFALLS**
Genevieve L. Bennett, M.D.
- 10:55 **ADNEXAL MASSES, THICKENED ENDOMETRIUM, AND OTHER INCIDENTALOMAS OF THE FEMALE PELVIS: HOW TO AVOID OVERDIAGNOSIS WITHOUT MISSING THE CANCER**
Susanna I. Lee, M.D., Ph.D.
- 11:35 **INTERESTING FEMALE PELVIC CASES: INTERACTIVE CASE REVIEW**
Chrystia M. Slywotzky, M.D.
- 12:15 **Questions & Discussion**
- 12:30 **Adjournment**



Registration Form

29TH ANNUAL MORTON A. BOSNIAK Head to Toe Imaging Conference

December 13–18, 2010

Online
Registration
[www.radcme.
med.nyu.edu](http://www.radcme.med.nyu.edu)

PLEASE PRINT CLEARLY

First Name _____
Last Name _____
Address _____
City _____
State _____ Zip _____
Day Phone _____
Fax _____
Email _____
(must be provided for confirmation/receipt)
Degree _____ Specialty _____
Sub-Specialty _____
Dietary Restrictions _____

Tuition Payment Options (Please Check)

	FULL	DISCOUNTED*
Entire 5½ Day Course	<input type="checkbox"/> \$1295	<input type="checkbox"/> \$975
—Stop here if you are registering for the entire course—		
Monday, Dec. 13 (Daily Fee) (Thoracic Imaging & Cardiac Imaging)	<input type="checkbox"/> \$375	<input type="checkbox"/> \$275
Tuesday, Dec. 14 (Daily Fee) (Musculoskeletal Imaging & Pediatric Imaging)	<input type="checkbox"/> \$375	<input type="checkbox"/> \$275
Tuesday, Dec. 14 Chelsea Art Tour (9:45-Noonish)	<input type="checkbox"/> \$35 per ticket	
Wednesday, Dec. 15 (Daily Fee) (Emergency Imaging & Interventional Radiology)	<input type="checkbox"/> \$375	<input type="checkbox"/> \$275
Thursday, Dec. 16 (Daily Fee) (Neuroradiology & PET/CT Imaging)	<input type="checkbox"/> \$375	<input type="checkbox"/> \$275
Thursday, Dec. 16 Chelsea Art Tour (9:45-Noonish)	<input type="checkbox"/> \$35 per ticket	
Friday, Dec. 17 (Daily Fee) (Abdominal Imaging & Breast Imaging)	<input type="checkbox"/> \$375	<input type="checkbox"/> \$275
Saturday, Dec. 18 (Daily Fee) (Women's Imaging)	<input type="checkbox"/> \$325	<input type="checkbox"/> \$225
TOTAL DUE	\$ _____	\$ _____

*Discounted Fees apply to: NYU School of Medicine alumni, M.D.'s employed by the Dept of Veterans Affairs, full-time active military personnel, technologists, retired physicians, current residents/fellows, Canadian and other non-U.S. physicians.

If you are registering on-line, you must fax a letter of authorization with the attendee's full name and date registered to (212) 263-3959. Please state reason for using reduced fee. If you are mailing a registration form and check, please enclose the authorization letter at the same time.

Reason for Discounted Fee: _____

For Alumni (dates of your NYU SOM or Radiology Training): _____

Refund Policy

If you need to cancel your enrollment, a \$75 service fee will be assessed for your tuition payment if written notice is received more than 30 days in advance and a \$150 service fee for cancellations made within 30 days. No refunds are possible if written notification is not sent.

Course Cancellation Policy

In the unusual circumstance that this course is cancelled, two weeks notice will be provided and full tuition refunded. The NYU Post-Graduate Medical School is not responsible for any airfare, hotel or other costs incurred.

Methods of Payment

- ☐ Check in U.S. Dollars made payable to **NYU Department of Radiology**
- ☐ Credit Card Payment (see below)

Methods of Registration

- ☐ Mailing Form with Check or Credit Card Information
- ☐ Faxing Form with Credit Card Information

Do not Fax form if registering online.

Mail To

Marisa Bruno, NYU Department of Radiology
462 First Avenue, OBH, C&D, Floor 1, Room 4, New York, NY 10016

Fax To: (212) 263-3959

In Case of Questions, Contact:

Michelle R. Koplik, Director of CME

Phone: (212) 263-3936 • email: michelle.koplik@nyumc.org

or **Marisa P. Bruno, Program Coordinator**

Phone: (212) 263-0724 • email: marisa.bruno@nyumc.org

Payment by Credit Card

Card Member's Name (print carefully) _____

Card # _____

Amount to be Charged: \$ _____

Bill to: ☐ Visa ☐ Mastercard ☐ American Express

Exp Date: Month/Year _____ / _____

Signature (required to process) _____

Confirmation of Course Acceptance:

A confirmation will be sent to you by email if your email address is provided. Faxed confirmations are no longer possible.

Educational Needs

If there is a specific question or topic relating to this course, please submit it on the registration form or on the website when registering online.

We hope you'll plan on joining us at one of these CME courses.

WWW.RADCME.MED.NYU.EDU

2010

AUG. 9-13	CLINICAL IMAGING UPDATE IN JACKSON HOLE	FOUR SEASONS, JACKSON HOLE, WY
OCT. 9-10	1ST ANNUAL DUAL ENERGY CT SYMPOSIUM	NYU MEDICAL CENTER, NEW YORK, NY
OCT. 11-12	MRI: CLINICAL STATE OF THE ART	NYU MEDICAL CENTER, NEW YORK, NY
OCT. 25-28	FALL RADIOLOGY SYMPOSIUM IN SCOTTSDALE	FOUR SEASONS, SCOTTSDALE, AZ
NOV. 12-13	FALL VIRTUAL COLONOSCOPY WORKSHOP	NEW YORK, NY
DEC. 13-18	29TH ANNUAL HEAD TO TOE IMAGING CONFERENCE	THE HILTON NEW YORK, NEW YORK, NY

2011

JAN. 3-7	NYU CLINICAL IMAGING SYMPOSIUM IN ARUBA	HYATT REGENCY RESORT, ARUBA
MARCH 14-18	9TH ANNUAL NYU RADIOLOGY ALPINE IMAGING SYMPOSIUM	PARK HYATT, BEAVER CREEK, CO
MAY 23-25	SPORTS MEDICINE IMAGING STATE OF THE ART: A COLLABORATIVE COURSE FOR RADIOLOGISTS AND SPORTS MEDICINE SPECIALISTS	NYU MEDICAL CENTER, NEW YORK, NY
JUNE 27-JULY 1	SUMMER RADIOLOGY SYMPOSIUM AT THE SAGAMORE	THE SAGAMORE, LAKE GEORGE, NY
AUG. 1-5	NYU SUMMER RADIOLOGY SYMPOSIUM	LA POSADA, SANTA FE, NM
OCT. 24-28	NYU IMAGING UPDATE	FOUR SEASONS, SANTA BARBARA, CA
DEC. 12-17	30TH ANNUAL HEAD TO TOE IMAGING CONFERENCE	THE HILTON NEW YORK, NEW YORK, NY

Michelle R. Koplik
michelle.koplik@nyumc.org
(212) 263-3936

Marisa P. Bruno
marisa.bruno@nyumc.org
(212) 263-0724



School of Medicine

Department of Radiology
462 First Avenue
OBH, C&D, Floor 1, Room 4
New York, NY 10016

Non-Profit Organization
U.S. Postage
Paid
New York University

29TH ANNUAL MORTON A. BOSNIAK Head to Toe Imaging Conference

December 13-18, 2010 • New York City



NYU School of Medicine

29TH ANNUAL MORTON A. BOSNIAK

Head to Toe Imaging Conference

at the Hilton New York
December 13-18, 2010

Mon., Dec. 13	Thoracic & Cardiac Imaging
Tue., Dec. 14	Musculoskeletal Imaging & Pediatric Imaging
Wed., Dec. 15	Emergency Imaging & Interventional Radiology
Thurs., Dec. 16	Neuroradiology & PET/CT Imaging
Fri., Dec. 17	Abdominal Imaging & Breast Imaging
Sat., Dec. 18	Women's Imaging

