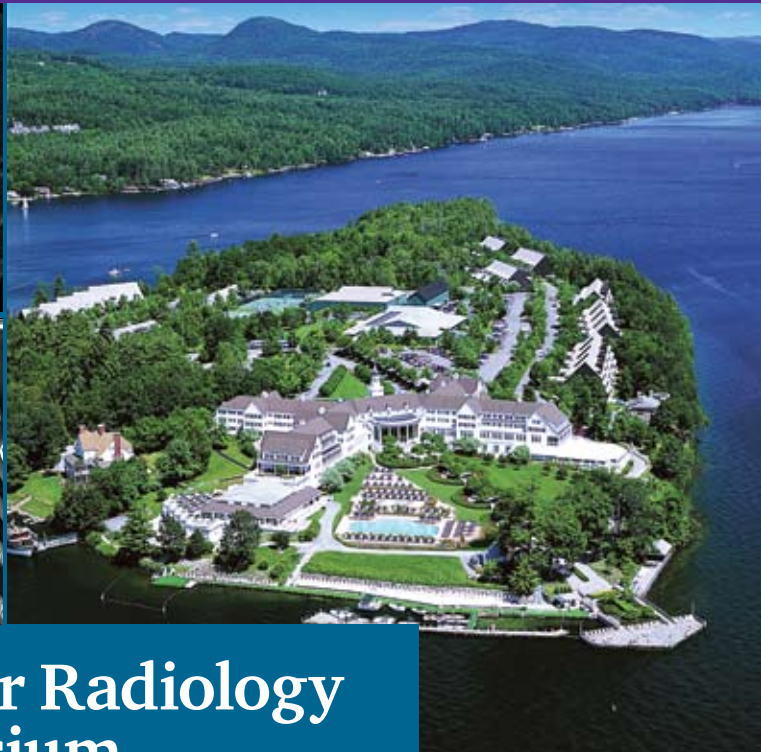
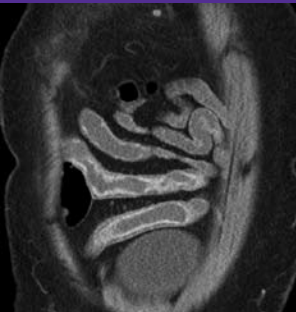




**School of Medicine**

*The Department of Radiology Presents:*

Sponsored by the  
NYU Post-Graduate  
Medical School

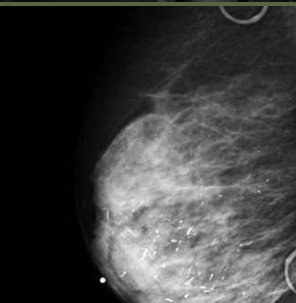
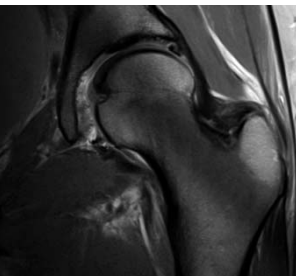


## Summer Radiology Symposium

*at the Sagamore Resort  
on Lake George*

**June 28-July 3, 2010**

**Bolton Landing, New York**



## Clinical Imaging Update

*at the Four Seasons,  
Jackson Hole*

**August 9-13, 2010**

**Jackson Hole, Wyoming**

# Summer Radiology Symposium at the Sagamore

June 28–July 2, 2010

## Course Director

**Kent P. Friedman, M.D.**

Assistant Professor of Radiology  
Chief, Nuclear Medicine

## NYU Faculty

**Nicole Hindman, M.D.**

Assistant Professor of Radiology

**Vivian S. Lee, M.D., Ph.D., M.B.A.**

Professor of Radiology and Physiology and Neuroscience

Vice Dean for Science,

Chief Scientific Officer

NYU Langone Medical Center

**Barry S. Leitman, M.D., F.A.C.R.**

Professor of Radiology  
Chief, Thoracic Imaging

**Rafael Rivera, M.D.**

Assistant Professor of Radiology

customization of cancer therapy, and radiological imaging of renal and hepatic masses. Image quality issues in cardiac MR, chest and body imaging, PET-CT and pediatric radiology will be addressed by review of up-to-date protocols. Didactic lectures will include many case-based clinical examples.

## Accreditation Statement

The NYU Post-Graduate Medical School is accredited by the Accreditation Council for Continuing Medical Education to provide continuing medical education for physicians.

## Credit Designation

The NYU Post-Graduate Medical School designates this educational activity for a maximum of 18 AMA PRA Category 1 Credits™. Physicians should only claim credit commensurate with the extent of their participation in the activity.

## Disclosure Statement

The NYU Post-Graduate Medical School adheres to ACCME Essential Areas and Policies, including the Standards for Commercial Support regarding industry support of continuing medical education. In order to resolve any identified conflicts of interest, disclosure information is provided during the planning process to ensure resolution of any identified conflicts. Disclosure of faculty and commercial relationships as well as the discussion of unlabeled or unapproved use of any drug, device or procedure by the faculty will be fully noted at the meeting.

## Special Needs

The Post-Graduate Medical School of the New York University School of Medicine, in compliance with the legal requirements of the Americans with Disabilities Act, requests any participant of this CME course who is in need of accommodation to submit written requests to our office at least one month prior to the course date.

## Registration Information

Online registration is fast and easy. Go to [www.radcme.med.nyu.edu](http://www.radcme.med.nyu.edu) to register or download the registration form.

## General Information

### Educational Objectives

- Apply up-to-date MR imaging techniques in the evaluation of cardiac, liver and genitourinary diseases.
- Accurately quantitate cancer treatment response using PET/CT by considering both changes in anatomy on CT and alterations in tumor metabolism on PET.
- Use state-of-the-art multi-detector CT, MR and ultrasound to improve diagnostic acumen in pediatric radiology and various disease processes in the chest, abdomen and pelvis, while utilizing radiation reduction strategies.
- Discuss the latest thinking on assessment of pulmonary emboli using CT angiography and review radiation reduction techniques including protocols for gravid and post-partum patients.

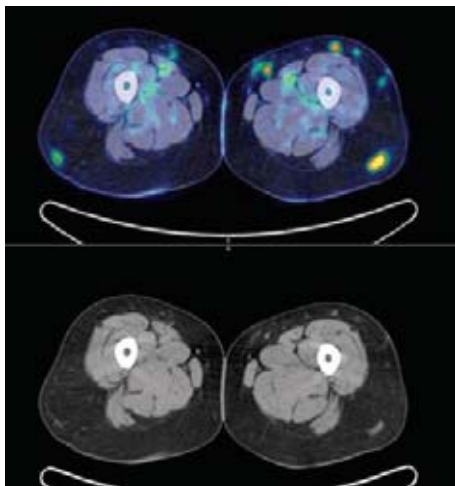
### Target Audience

This course is designed for clinical radiologists in academic or private practice.

### Statement of Need/ Course Description

This program is designed to teach the attendee how to perform state-of-the-art CT, MR and ultrasound in order to improve diagnostic acumen in various disease processes in the chest, abdomen and pelvis. The course will focus on renal MRI, prostate imaging, pediatric ultrasound, chest CT, cardiac MR, and PET/CT.

Specific topics will include the use of prostate MR as a tool to help urologists manage difficult cases of prostate cancer, the use of PET/CT for



# Summer Radiology Symposium *at the Sagamore*

June 28–July 2, 2010

## Meeting Schedule

### Sunday, June 27th

4:00–6:00pm **Registration**

### Monday, June 28th

- 7:00am **Registration and Breakfast**
- 7:40am **Welcome**
- 7:45am **Renal MRI: Form to Function**  
Vivian S. Lee, M.D., Ph.D., M.B.A.
- 8:30am **Cystic Renal Masses: Diagnosis and Practical Management**  
Nicole Hindman, M.D.
- 9:15am **Masses in the Cirrhotic Liver: A Case-Based Approach**  
Vivian S. Lee, M.D., Ph.D., M.B.A.
- 10:00am **Coffee Break**
- 10:15am **Hot Topics in MR Imaging of the Female Pelvis**  
Nicole Hindman, M.D.
- 11:00am **Introduction to Cardiac MRI**  
Vivian S. Lee, M.D., Ph.D., M.B.A.
- 11:45am **Interesting Cases of the Day: Cardiac MRI**  
Vivian S. Lee, M.D., Ph.D., M.B.A.
- 12:15pm **Questions & Discussion**
- 12:30pm **Adjourn**

### Tuesday, June 29th

- 7:15am **Breakfast**
- 7:45am **Non-Contrast-Enhanced MR Angiography: New Possibilities**  
Vivian S. Lee, M.D., Ph.D., M.B.A.
- 8:30am **Prostate MRI: What the Urologist Wants to Know**  
Nicole Hindman, M.D.
- 9:15am **Bread and Butter Outpatient Pediatric US: Hip, Head and Spine**  
Rafael Rivera, M.D.
- 10:00am **Coffee Break**
- 10:15am **Confusing Post-Operative Cases: What the General Surgeon Needs to Know**  
Nicole Hindman, M.D.
- 11:00am **Pediatric Musculoskeletal MR: A Primer**  
Rafael Rivera, M.D.
- 11:45am **Interesting Cases of the Day: Abdomen**  
Nicole Hindman, M.D.
- 12:15pm **Questions & Discussion**
- 12:30pm **Adjourn**

### Wednesday, June 30th

**FREE DAY**

### Thursday, July 1st

- 7:15am **Breakfast**
- 7:45am **US of the Acute Pediatric Abdomen**  
Rafael Rivera, M.D.
- 8:30am **Imaging in the ICU: From the Mundane to the Arcane**  
Barry S. Leitman, M.D., F.A.C.R.
- 9:15am **The Role of CT in Imaging the Pediatric Chest and Abdomen**  
Rafael Rivera, M.D.
- 10:00am **Coffee Break**
- 10:15am **HRCT of the Lungs: Interpretation and Communication**  
Barry S. Leitman, M.D., F.A.C.R.
- 11:00am **PET/CT in Lung Cancer**  
Kent P. Friedman, M.D.
- 11:45am **Interesting Cases of the Day: Pediatrics**  
Rafael Rivera, M.D.
- 12:15pm **Questions & Discussion**
- 12:30pm **Adjourn**

### Friday, July 2nd

- 7:15am **Breakfast**
- 7:45am **PET/CT of Lymphoma**  
Kent P. Friedman, M.D.
- 8:30am **CT of Pulmonary Emboli: The How and The Why**  
Barry S. Leitman, M.D., F.A.C.R.
- 9:15am **PET/CT in Breast Cancer**  
Kent P. Friedman, M.D.
- 10:00am **Coffee Break**
- 10:15am **Interesting Unknown Chest CT Cases**  
Barry S. Leitman, M.D., F.A.C.R.
- 11:00am **PET/CT in Gynecological Malignancies**  
Kent P. Friedman, M.D.
- 11:45am **Interesting Cases of the Day: PET/CT**  
Kent P. Friedman, M.D.
- 12:15pm **Questions & Discussion**
- 12:30pm **Adjourn**

You may register for this meeting online or by completing the registration form on our website and faxing to 212-263-3959.

<http://www.med.nyu.edu/courses/cme/sagamore>



# Summer Radiology Symposium at the Sagamore

June 28–July 2, 2010

## Hotel Information

### The Sagamore on Lake George

The magnificent Sagamore on Lake George has been extending hospitality to visitors to Bolton Landing for over one hundred years. Poised on the southern end of Green Island, The Sagamore commands a stunning view of Lake George and the islands that grace its waters. This family friendly golf and lakefront resort offers luxury accommodations, excellent dining, superb fitness and spa facilities and a host of opportunities to enjoy the incredible beauty of the Adirondacks.

### Upstate New York's Luxury Resort and Sports Paradise

Discover the endless opportunities for fun for guests of all ages. The Sagamore's recreational offerings include splendid golf, wonderful programs just for kids, boating and fishing on the waterfront, complimentary tennis and other outdoor sports, plus indoor fitness, swimming, movies and games.

Complimentary activities for children include: pool (indoor with whirlpool and outdoor pool), lake and water sports, bonfires, arts & crafts, movies, games, playground, volleyball, basketball, tennis and much more! Please visit the NYU website for more information about activities.

### The Unspoiled Adirondacks

The Sagamore, located in the heart of the Adirondacks, is an island resort on Lake George anchored in Bolton Landing, New York. Located 60 miles north of Albany via Interstate 87, The Sagamore is a leisurely drive from most Mid-Atlantic, New England, Quebec and Ontario Province metropolitan areas, and is just a four-hour drive from New York City or Boston. From outdoor adventure to peaceful solitude, you will find it here in the Adirondacks. With more than 20 beautiful lakes, countless outdoor activities and dozens of exciting attractions, the Lake George area is the perfect vacationer's paradise.

### Getting to the Sagamore Resort on Lake George

#### Albany-Rensselaer, NY Amtrak Station

The Albany train station is 70 miles from the resort. If you are renting a car there is an Enterprise Rental Car Agency at the station.

#### Albany Airport (ALB)

The Albany Airport is approximately one hour from the Sagamore Resort.

*The Sagamore can arrange transportation to and from the airport/train station for guests. If you are interested, please call the hotel directly at 518-644-9400 and ask for transportation information and pricing.*

### Discounted NYU Hotel Rates

#### Hotel Rooms & Suites

A new era of modern elegance in the heart of the Adirondacks. Originally built in 1883 and lovingly restored, the Historic Hotel features clapboard siding and classic architecture. The guest rooms have updated furnishings, high-speed Internet connection and a choice of garden or lake views. The Historic Hotel rooms and one-bedroom suites are richly appointed in club-style ambiance combined with original art and decorative accessories. Marble baths with pedestal sinks pamper every guest. Governor's rooms and one or two-bedroom suites offer panoramic views of Lake George. Bathrooms are accented with marble and pedestal sinks. All rooms and suites in our Historic Hotel are non-smoking.

**Gardenview Hotel Room: \$249**

**Lakeview Hotel Room: \$299**

**Gardenview Hotel Suite: \$369**

**Lakeview Hotel Suite: \$399**

### Lodge Rooms & Suites

The lodge rooms and suites are the value accommodations on the property and are a short walk or shuttle ride to the hotel. Lodge rooms do not offer lake views, but have an Adirondack feel. Suites have dining alcoves, wet bar, refrigerator, microwave, gas fireplace, a 42" plasma screen, spacious bath with separate tub and walk-in shower.

**Lodge Room: \$199**

**Lodge Suite: \$319**

All rates include complimentary daily parking, wireless internet, access to fitness center, complimentary Island & Golf Club shuttle, free local 800 calls, daily paper and resort activities.

### Reservations

Online hotel reservations can be made by visiting the NYU website. Or you may call the hotel directly at 1-800-358-3585 and mention the NYU Radiology Group.

Deadline for reservations: May 27, 2010.

# Clinical Imaging Update *at Jackson Hole*

August 9–13, 2010

## Course Director

**Linda Moy, M.D.**

Assistant Professor of Radiology

## NYU Faculty

**Jane P. Ko, M.D.**

Associate Professor of Radiology

**Ruth P. Lim, M.D.**

Assistant Professor of Radiology

**Bidyut K. Pramanik, M.D.**

Assistant Professor of Radiology

**Leon D. Rybak, M.D.**

Assistant Professor of Radiology

## General Information

### Educational Objectives

- Discuss the American Cancer Society issued guidelines about screening MRI in high-risk women and methods to apply them to practice.
- Describe non-contrast-enhanced and low dose MRA techniques, and evaluate the benefits of new contrast agents in the context of MRA imaging alternatives for patients with renal failure.
- Discuss the FDA recommendations regarding excess radiation exposure during CT Perfusion imaging and how it will impact on clinical care of acute stroke imaging.
- Integrate appropriate imaging strategies and diagnostic algorithms for assessing pulmonary embolism, lung nodules, and interstitial lung disease.
- Discuss up-to-date theory as to the pathogenesis and imaging correlates for sports related injuries in the elbow and ankle and apply them to diagnostic strategies.

### Target Audience

This course is designed for clinical radiologists interested in the efficient application of imaging in a wide array of specialty areas. This course will emphasize a case-based imaging review of practical approaches to common clinical conditions and diseases. Didactic lectures will focus on updating and optimizing imaging protocols.

### Statement of Need/ Course Description

It is imperative to stay abreast of the most up-to-date imaging protocols when examining the regions of the abdomen, breast, brain, chest, and musculoskeletal system in order to improve image interpretation. Clinical radiologists must stay up-to-date on appropri-

ate advanced imaging techniques in order to diagnose a wide-range of illnesses, including renal insufficiency, thoracic aortic disease and acute stroke.

This course is designed to establish appropriate imaging strategies and diagnostic algorithms relating to Breast Imaging, Abdominal Imaging, Musculoskeletal, Thoracic and Neuroradiology. Participants will review the American Cancer Society guidelines for screening MRI and the ACR guidelines for Breast MRI. The participant will also learn how to utilize new strategies/pulse sequences in CT and MR, and apply this understanding to enhance clinical practices. Dose conserving methods for CT will be covered pertaining to clinical protocols for chest imaging. By learning up-to-date imaging protocols, you will also review the brachial plexus, lumbar spine and the female pelvis.

### Accreditation Statement

The NYU Post-Graduate Medical School is accredited by the Accreditation Council for Continuing Medical Education to provide continuing medical education for physicians.

### Credit Designation

The NYU Post-Graduate Medical School designates this educational activity for a maximum of *18 AMA PRA Category 1 Credits™*. Physicians should only claim credit commensurate with the extent of their participation in the activity.

### Disclosure Statement

The NYU Post-Graduate Medical School adheres to ACCME Essential Areas and Policies, including the Standards for Commercial Support regarding industry support of continuing medical education. In order to resolve any identified conflicts of interest, disclosure information is provided during the planning process to ensure resolution of any identified conflicts. Disclosure of faculty and commercial relationships as well as the discussion of unlabeled or unapproved use of any drug, device or procedure by the faculty will be fully noted at the meeting.

### Special Needs

The Post-Graduate Medical School of the New York University School of Medicine, in compliance with the legal requirements of the Americans with Disabilities Act, requests any participant of this CME course who is in need of accommodation to submit written requests to our office at least one month prior to the course date.

### Registration Information

Online registration is fast and easy. Go to [www.radcme.med.nyu.edu](http://www.radcme.med.nyu.edu) to register or download the registration form.

# Clinical Imaging Update *at Jackson Hole*

August 9–13, 2010

## Meeting Schedule

### Sunday, August 8th

4:00-6:00pm Registration

### Monday, August 9th

#### MSK & Mammo

- 7:00am Registration and Breakfast  
7:40am Welcome  
7:45am Breast MRI: Clinical Applications  
Linda Moy, M.D.  
8:30am MRI Elbow  
Leon D. Rybak, M.D.  
9:15am Technical & Clinical Considerations  
for Digital Mammography  
Linda Moy, M.D.  
10:00am Coffee Break  
10:15am Imaging of Hip Pathology in the  
Young Adult  
Leon D. Rybak, M.D.  
11:00am BI-RADS for Breast US:  
Case-Based Approach  
Linda Moy, M.D.  
11:45am Interesting Cases of the Day  
Musculoskeletal  
12:15pm Questions & Discussion  
12:30pm Adjourn

### Tuesday, August 10th

#### Neuro, Thoracic & Body

- 7:15am Breakfast  
7:45am The TMJ:  
Why, When and How to Image  
Bidyut K. Pramanik, M.D.  
8:30am Thoracic Aorta: Acute Syndromes  
and Post-Operative Evaluation  
Jane P. Ko, M.D.  
9:15am Peripheral MRA: Tips and Tricks  
Ruth P. Lim, M.D.  
10:00am Coffee Break  
10:15am Management of the Solitary  
Pulmonary Nodule  
Jane P. Ko, M.D.  
11:00am Imaging of the Brachial Plexus  
Bidyut K. Pramanik, M.D.  
11:45am Interesting Cases of the Day  
Thoracic  
12:15pm Questions & Discussion  
12:30pm Adjourn

### Wednesday, August 11th

FREE DAY

### Thursday, August 12th

#### Neuro, Body & MSK

- 7:15am Breakfast  
7:45am Advanced CT in Acute Stroke  
Bidyut K. Pramanik, M.D.  
8:30am MRI of the Female Pelvis  
Ruth P. Lim, M.D.  
9:15am Lumbar Spine Surgery for the  
Radiologist  
Leon D. Rybak, M.D.  
10:00am Coffee Break  
10:15am Orbital Imaging  
Bidyut K. Pramanik, M.D.  
11:00am MRI Ankle  
Leon D. Rybak, M.D.  
11:45am Interesting Cases of the Day  
Neuroradiology  
12:15pm Questions & Discussion  
12:30pm Adjourn

### Friday, August 13th

#### Mammo, Body & Thoracic

- 7:15am Breakfast  
7:45am MR of Focal Liver Lesions:  
a Case-Based Approach  
Ruth P. Lim, M.D.  
8:30am Probably Benign Findings Detected  
on Breast MRI  
Linda Moy, M.D.  
9:15am HRCT: Interstitial Pneumonias  
Jane P. Ko, M.D.  
10:00am Coffee Break  
10:15am Pulmonary Embolus  
Optimizing Technique and Pitfalls  
Jane P. Ko, M.D.  
11:00am MRI of Renal Masses  
Ruth P. Lim, M.D.  
11:45am Interesting Cases of the Day  
Breast  
12:15pm Questions & Discussion  
12:30pm Adjourn

You may register for this meeting online or by completing the registration form on our website and faxing to 212-263-3959.

<http://www.med.nyu.edu/courses/cme/jackson10>

# Clinical Imaging Update at Jackson Hole

August 9–13, 2010

## Hotel Information

### Four Seasons Resort, Jackson Hole, Wyoming

Surrounded by the vistas of the spectacular Teton Mountain range, Four Seasons Resort Jackson Hole offers unsurpassed luxury nestled between majestic mountains and the wildflower meadows of Teton Valley. The resort's guest rooms are generously sized and embody the spirit of a mountain retreat with dark wood and natural stone finishes, accented by leather insets. Comfortable, residential-style furnishings in these Jackson Hole accommodations are arranged around a gas-burning fireplace. Most rooms open to a private balcony or terrace furnished with a teak table and chairs.

In addition to all of the many Four Seasons amenities and exquisite world-renowned service and personal attention to guests, the resort has a wonderful art gallery, a state-of-the-art Fitness Center and 11,685 sq ft Spa featuring 16 treatment rooms plus a year-round outdoor swimming pool and three hot-spring style whirlpools.

### Discounted NYU Hotel Rates

ROOM TYPE	NYU	PUBLIC
Standard Kings	\$375	\$595
Deluxe Kings	\$475	\$750
Premium Kings	\$500	\$850
Deluxe Doubles	\$575	\$800
Premium Doubles	\$625	\$900

Complimentary internet access, complimentary access to spa & fitness center and reduced fee for valet parking (\$18/day) are included in the NYU group rates.

*Please note: rooms with 2 beds are very limited and NYU has secured as many as possible to accommodate families. Suites are also great options for families. For rates and availability for suites, please contact Travel Planners at 1-800-531-7201.*

### Hotel Reservations

The above discounted rates may only be obtained by booking through (TPI) Travel Planners, Inc. (NYU's travel representative). Online hotel reservations can be made by visiting the NYU website (<http://www.med.nyu.edu/courses/cme/jackson10>) and following the link. Or you may download the PDF form found on the website and fax this to TPI. For questions, call TPI directly at 1-800-531-7201. **Deadline for making reservations is July 1, 2010.**

### Getting to the Four Seasons, Jackson Hole

Located in the heart of Teton Village, the Four Seasons is just 35 minutes from the Jackson Hole Airport, 15 minutes from the historic town of Jackson and 60 miles from Yellowstone National Park.

## Summer Activities

Four Seasons offers a unique vantage point from which to explore the surrounding sights, sounds and experiences. Begin with a tour of the Resort's art collection, then explore the area's natural beauty in the national parks, visit a nearby museum or enjoy an outdoor adventure. In the summer, enjoy hiking, mountain biking, rock climbing, gondola rides, tram rides, paragliding, hot air balloon rides and the Kids Ranch Summer Camp.

NYU has organized a few exclusive activities for course participants. Reservations may be made on the hotel reservation page. In addition, local staff will be onsite to assist with other activities, area information and dining suggestions. Please visit the NYU website for more information about activities.

### Grand Teton National Park Jackson Hole, Wyoming

Grand Teton National Park...where the majestic Teton Range rises impressively along the eastern edge of the scenic valley known as Jackson Hole. The Grand Teton National Park is home to countless species of wildlife and some of the most spectacular scenery to be found on earth. It is a very special place filled with the cleanest air, clearest water and the most dramatic and majestic views imaginable. Activities in the park and Jackson Hole abound...fly-fishing (blue-ribbon trout fishing is a hallmark of this area), hiking on more than 250 miles of maintained trails with wildflowers, floating or white-water rafting on the famed Snake River, horseback riding galore, golf at either Teton Pines or Jackson Hole Golf & Tennis Club, tennis, biking and more...Glider tours, paragliding and hot-air ballooning are also offered for unforgettable experiences over the spectacular Teton Mountain Range.

### Jackson Hole, Wyoming

Downtown Jackson is only 15 minutes away from the Four Seasons Resort with the Historical Society and Museum, extensive fine dining art galleries, and shopping to please every taste and budget. The kids will love the daily 6:15 p.m. shoot-out on the Town Square in Jackson and perhaps the whole family will enjoy the rodeo.

### Yellowstone National Park

*(only 60 miles from the Four Seasons – perfect day trip!)*

You may wish to allow enough time in your trip to visit this natural wonder. Yellowstone National Park is America's oldest and foremost National Park. Encompassing 2.2 million acres, it boasts more geysers than anywhere else on the globe. It has 250 active geysers out of a total of 10,000 geothermal features, including the world-renowned Old Faithful. Yellowstone's Grand Canyon is 1,200 feet (366 metres) deep and highlighted by the powerful Upper Falls. Its mountain-range wilderness is a refuge for wildlife such as grizzly bear, elk, bald eagles, American bison, moose and wolf. The park is open to the public from mid-April through November.

## RADIOLOGY CME CALENDAR

### 2010

JAN. 25-29	<b>MUSCULOSKELETAL &amp; NEURORADIOLOGY MR IMAGING UPDATE</b>	FOUR SEASONS, MAUI
MARCH 22-26	<b>8TH ANNUAL NYU RADIOLOGY ALPINE IMAGING SYMPOSIUM</b>	PARK HYATT, BEAVER CREEK, CO
APRIL 23-24	<b>SPRING VIRTUAL COLONOSCOPY WORKSHOP</b>	THE RALEIGH HOTEL, SOUTH BEACH, FL
MAY 24-26	<b>SPORTS MEDICINE IMAGING STATE OF THE ART</b>	NEW YORK, NY
JUNE 28-JULY 2	<b>SUMMER RADIOLOGY SYMPOSIUM</b>	THE SAGAMORE, LAKE GEORGE, NY
AUGUST 9-13	<b>CLINICAL IMAGING UPDATE</b>	FOUR SEASONS, JACKSON HOLE, WY
SEPTEMBER	<b>DUAL ENERGY CT &amp; MRI STATE OF THE ART</b>	NYU MEDICAL CENTER
OCT. 15-28	<b>FALL RADIOLOGY SYMPOSIUM IN SCOTTSDALE</b>	FOUR SEASONS SCOTTSDALE, AZ
DEC. 13-18	<b>29TH ANNUAL HEAD-TO-TOE IMAGING CONFERENCE</b>	HILTON HOTEL NEW YORK, NY
JAN. 3-7	<b>NYU RADIOLOGY IN NEVIS</b>	FOUR SEASONS, NEVIS
OCTOBER (TENTATIVE)	<b>NYU IMAGING UPDATE</b>	FOUR SEASONS, SANTA BARBARA

[WWW.RADCME.MED.NYU.EDU](http://WWW.RADCME.MED.NYU.EDU)

### For More Information:

**Michelle R. Koplik**  
Michelle.Koplik@nyumc.org  
(212) 263-3936

**Marisa P. Bruno**  
Marisa.Bruno@nyumc.org  
(212) 263-0724



## School of Medicine

New York University  
School of Medicine  
Department of Radiology  
462 1st Avenue  
OBH, C&D Bldg, 1st FL, Rm 4  
New York, NY 10016

Non-Profit Organization  
U.S. Postage  
**Paid**  
New York University



## Summer Radiology Symposium at the Sagamore Resort on Lake George

June 28-July 3, 2010  
Bolton Landing, New York



## Clinical Imaging Update at the Four Seasons, Jackson Hole

August 9-13, 2010  
Jackson Hole, Wyoming