

SCHOOL OF
MEDICINE



NEW YORK UNIVERSITY

Sponsored by the
NYU Post Graduate Medical School
and the Department of Radiology

FALL INTO WOMEN'S IMAGING:

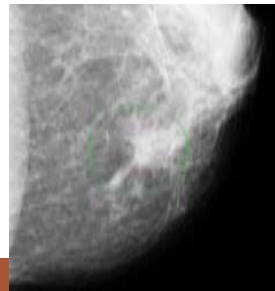
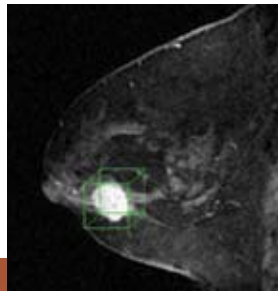
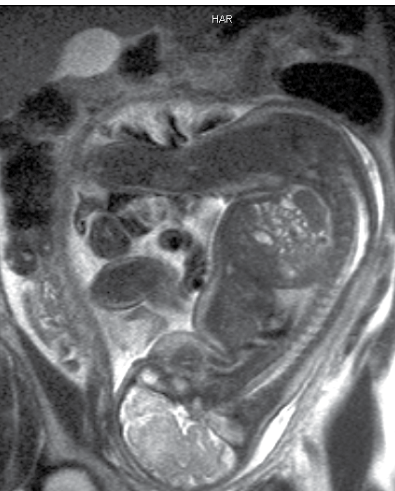
an NYU Autumn Update of Breast and
Women's Imaging Essentials



October 11-14, 2007

The Equinox

Manchester Village, Vermont



NYU School of Medicine Course Directors:

GENEVIEVE L. BENNETT, M.D.
Chief, Women's Imaging

HILDEGARD K. TOH, M.D.
Chief, Breast Imaging

NYU WOMEN'S IMAGING Overview & General Information

Fall Into Women's Imaging
Manchester Village, Vermont
October 11-14, 2007

PARTICIPATING FACULTY

Co-NYU Course-Directors:

Genevieve L. Bennett, M.D.
Chief, Women's Imaging

Hildegard K. Toth, M.D.
Chief, Breast Imaging

NYU Faculty

Genevieve L. Bennett, M.D.
Assistant Professor of Radiology
Chief, Women's Imaging

John A. Bonavita, M.D.
Assistant Professor of Radiology

Thomas H. Frenna, M.D.
Assistant Professor of Radiology

Elizabeth M. Hecht, M.D.
Assistant Professor of Radiology

Dara C. Lifschutz, M.D.
Assistant Professor of Radiology

Cecilia L. Mercado, M.D.
Assistant Professor of Radiology

Linda Moy, M.D.
Assistant Professor of Radiology

Hildegard K. Toth, M.D.
Associate Professor of Radiology
Chief, Breast Imaging

Guest Faculty

Carol B. Benson, M.D.
Professor of Radiology
Harvard Medical School
Director of Ultrasound and Co-Director of
High Risk Obstetrical Ultrasound
Brigham and Women's Hospital
Boston, MA

Peter M. Doubilet, M.D., Ph.D.
Professor of Radiology
Vice Chair, Division of Diagnostic Radiology
Brigham and Women's Hospital
Boston, MA

Liane E. Philpotts, M.D.
Associate Professor of Diagnostic Radiology
Chief of Breast Imaging
Co-Director of Yale Breast Center
Yale University School of Medicine
New Haven, CT

The Post-Graduate Medical School of the New York University School of Medicine is committed to improving patient care through continuing medical education.

PURPOSE STATEMENT

Due to the rapidly evolving field of women's imaging and breast imaging, there is a need for maintaining cutting-edge knowledge of new clinical applications, techniques and interpretation. Maintenance of certification requires continued review of essential imaging techniques in all areas of radiology.

TARGET AUDIENCE

This course is intended for radiologists in academics or private practice.

COURSE DESCRIPTION

This four-day course is designed for the practicing radiologist with particular interest in women's imaging and breast imaging.

During the women's imaging segment, the participating faculty will discuss each of the imaging modalities applied to obstetrical and gynecological imaging including ultrasound, MRI and CT. Practical and multimodality approaches to common imaging problems in the female pelvis will be emphasized, including imaging of the patient with pelvic pain, evaluation of adnexal masses and assessment of benign and malignant disorders of the uterus. Topics in obstetrical imaging will include requirements for the sonographic fetal anatomic survey, sonographic evaluation of obstetrical emergencies, normal and abnormal first trimester pregnancy and imaging pitfalls. The role of MR and CT in the evaluation of the pregnant patient will also be discussed.

During the Breast Imaging component of this course, the practicing radiologist will become familiar with mammographic technique and the various adjunctive methods available to diagnose breast disease. These methods include ultrasound, MRI, spectroscopy, and interventional procedures. The radiologist will learn helpful algorithms to better direct the diagnostic workup. Management and follow-up review for high-risk lesions will be discussed. The value of the integrated approach to breast health will be emphasized. There will be ample time scheduled for questions and discussion between faculty and course attendees.

EDUCATIONAL OBJECTIVES

1. In order to improve overall diagnostic accuracy, understand and apply adjunctive diagnostic tools such as image-guided biopsies in the evaluation of suspicious breast lesions.
2. When examining the breast, improve interpretation skills of mammography, ultrasound and MRI, based on advanced imaging protocols.
3. In the evaluation of the breast, describe appropriate indications and categorize breast lesions on dynamic contrast enhanced MR, based on the discussion of high-field strength MRI and spectroscopy.
4. In order to improve diagnostic acumen, effectively use ultrasound and CT to evaluate the patient with pelvic pain.
5. Given pregnant patients with abdominal pain, diagnose various abnormalities using ultrasound, CT and MRI.
6. Given patients who present with vaginal bleeding and suspected cervical or uterine malignancy, effectively use various imaging methods to evaluate the patient, based on state-of-the-art imaging applications.

ACCREDITATION STATEMENT

The NYU Post-Graduate Medical School is accredited by the Accreditation Council for Continuing Medical Education (ACCME) to provide continuing medical education for physicians.

CREDIT DESIGNATION

The NYU Post-Graduate Medical School designates this educational activity for a maximum of 16.75 *AMA PRA Category 1 credits*™. Physicians should only claim credits commensurate with the extent of their participation in the activity.

MAMMOGRAPHY CREDITS

8.25 breast imaging credits applicable to the MQSA accreditation requirements.

Breakdown of Mammography Credits

Breast MR Imaging Credits.....	2.5
Digital Mammography Credits	2.5
Breast Ultrasound Credits	0.75
Ultrasound-Guided Biopsy Credits	0.5
Stereotactic Biopsy Credits.....	0.5
Medical-Legal and Interesting Cases.....	1.5

DISCLOSURE STATEMENT

The NYU Post-Graduate School adheres to ACCME Essential areas and policies, including the Standards for Commercial Support regarding industry support of continuing medical education. In order to resolve any identified conflicts of interest, disclosure information is provided during the planning process to ensure resolution of any identified conflicts. Disclosure of faculty and commercial relationships as well as the discussion of off-label or investigational use of any drug, device or procedure by the faculty or procedure by the faculty will be fully noted at the meeting.

REGISTRATION INFORMATION

Registration fees are \$875 for this 4-day course (\$545 for residents, fellows, NYU alumni, retirees, Canadian and overseas physicians and V.A. employees). On-line registration is the fastest and easiest way to register and be sure to provide your email address.

CANCELLATION POLICY

If you need to cancel your enrollment, a \$75 service charge will be assessed for your tuition payment if written notice is received at least 30 days in advance and a \$150 service fee for cancellations made within 30 days. No refunds are possible if written notification is not sent.

SPECIAL NEEDS

The Post-Graduate Medical School of the New York University School of Medicine, in compliance with the legal requirements of the Americans with Disabilities Act, requests that any participant of this CME course who is in need of accommodations to submit written requests to our office at least one month prior to the course start date.

DIETARY RESTRICTIONS

Please indicate any dietary restrictions on the registration form.

SPECIAL TOPICS/QUESTIONS

If there is a special topic or question that would help fulfill your educational needs, please submit it on the registration form.

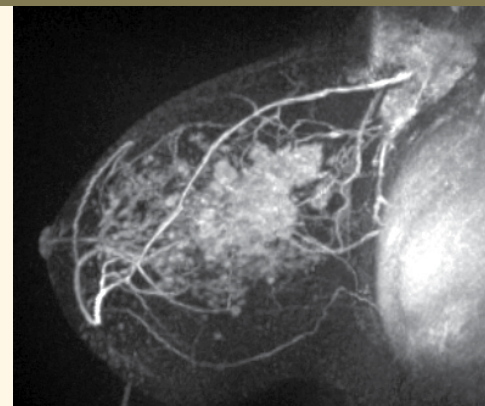
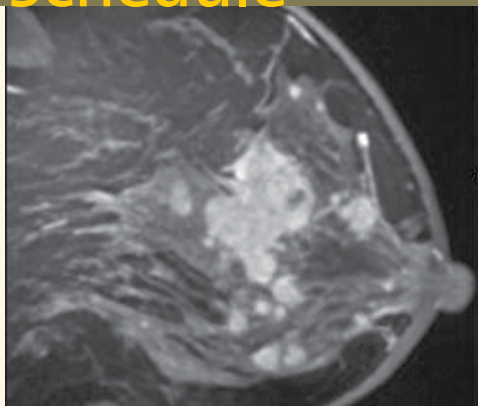
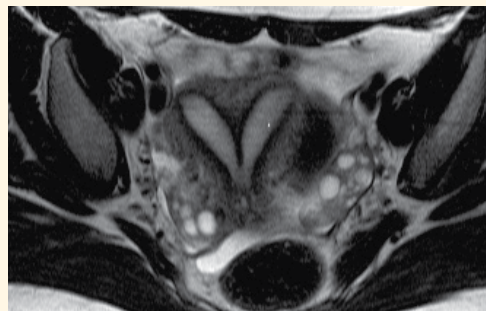
& BREAST IMAGING Program Schedule

THURSDAY, OCTOBER 11TH

- 7:00am **Registration & Continental Breakfast**
- 7:55am **Welcome (Drs. Bennett and Toth)**
- 8:00am **Digital Mammography: An Overview Analysis**
Hildegard K. Toth, M.D.
- 8:45am **Breast Ultrasound: Current Status**
Thomas H. Frenna, M.D.
- 9:30am **Management of High-Risk Lesions**
Cecilia L. Mercado, M.D.
- 10:15am **Questions and Discussion**
- 10:30am **Break**
- 10:45am **US and CT Evaluation of the Patient with Pelvic Pain**
Genevieve L. Bennett, M.D.
- 11:30am **MR Evaluation of Benign Disorders of the Female Pelvis**
Elizabeth M. Hecht, M.D.
- 12:15-12:30pm **Questions & Discussion**

FRIDAY, OCTOBER 12TH

- 7:30am **Continental Breakfast**
- 8:00am **Multimodality Imaging Evaluation of Adnexal Masses**
John A. Bonavita, M.D.
- 8:45am **MR Evaluation of Uterine and Cervical Malignancy**
Elizabeth M. Hecht, M.D.



- 9:30am **Medico-Legal Aspects of Breast Imaging**
Hildegard K. Toth, M.D.
- 10:15am **Questions and Discussion**
- 10:30am **Break**
- 10:45am **Breast Tomosynthesis: Review and Update**
Liane E. Philpotts, M.D.
- 11:30am **Image-Guided Interventions: Procedures and Pitfalls**
Dara C. Lifschutz, M.D.
- 12:15-12:30pm **Questions & Discussion**

SATURDAY, OCTOBER 13TH

- 7:30am **Continental Breakfast**
- 8:00am **Postmenopausal Vaginal Bleeding: Sonography and Sonohysterography**
Peter M. Doubilet, M.D., Ph.D.
- 8:45am **The Fetal Anatomic Survey: Standards for Practice of Obstetrical Ultrasound**
Carol B. Benson, M.D.
- 9:30am **Pitfalls in Imaging of the Female Pelvis**
John A. Bonavita, M.D.
- 10:15am **Questions and Discussion**
- 10:30am **Break**
- 10:45am **MRI-Guided Breast Interventions**
Liane E. Philpotts, M.D.
- 11:30am **Role of MRI in the Evaluation of Breast Cancer**
Linda Moy, M.D.
- 12:15-12:30pm **Questions & Discussion**

SUNDAY, OCTOBER 14TH

- 7:30am **Continental Breakfast**
- 8:00am **Emerging Techniques in Breast MRI**
Linda Moy, M.D.
- 8:45am **Challenging Case Review**
Cecilia L. Mercado, M.D.
- 9:30am **Sonography of Normal and Abnormal First Trimester Pregnancy**
Carol B. Benson, M.D.
- 10:15am **Break**
- 10:30am **Emergency Obstetrical Ultrasound**
Peter M. Doubilet, M.D., Ph.D.
- 11:15am **CT and MR Evaluation of the Pregnant Patient**
Genevieve L. Bennett, M.D.
- Noon **Questions & Discussion**
- 12:15pm **Adjournment**
- 12:15-1:30pm **OPTIONAL**
A final farewell brunch before you depart for home

Acknowledgements

The organizers acknowledge the educational support received from the following organizations:

BERLEX LABORATORIES

SIEMENS MEDICAL SOLUTIONS

NYU WOMEN'S IMAGING

Travel & Hotel Information

THE EQUINOX EST. 1769 MANCHESTER VILLAGE, VERMONT

Established in 1769 as a peaceful summer retreat for the wealthy and privileged, the Equinox is the quintessential New England resort, with a romantic history that pre-dates American Independence. Situated on 1,300 acres, between the Green and Taconic Mountains, The Equinox has played host to Ulysses S. Grant, Teddy Roosevelt and Mary Todd Lincoln and today symbolizes all that is elegant with its grand country splendor and restored 19th century brilliance.

With spectacular views, colorful landscapes stretch in every direction, the Equinox stands in the center of Manchester and offers the comforts of an authentic New England village, with the world-class Avanyu Spa, awarded as one of only nine Leading Spas of the World.

- Proud member of The Leading Hotels of the World.
- The Equinox was named one of *Golf Week's* America's Best Resort Golf Courses.
- The Readers of *DEPARTURES* magazine rated The Equinox "the #1 Luxury Resort" in the Northeast
- Rated by Travel + Leisure magazine as one of the 500 Greatest Hotels in the World

ACCOMMODATIONS

The epitome of traditional elegance and personal comfort, accommodations at The Equinox are a perfect complement to the rich history and natural beauty of the New England countryside. Choose from 183 guest rooms, suites, and townhouse accommodations adorned with antique furnishings, Audubon prints, and richly textured fabrics.

Room Rates

The following special room rates have been arranged for the NYU Radiology group. Rates do not include taxes.

Room: \$379/night (single) & \$389/night (double)

Suite: Large 1 bedroom with one sitting room located in the main hotel

- \$550/night (single) & \$560/night (double)

Townhouse: Ideal accommodation for a family, the Townhouse Suite is equipped with a



queen-sized bed, it's own living room with cozy fireplace, fully equipped kitchen, a queen sized sleeper sofa and access to a patio from which guests enjoy stunning views of the Green Mountains.

- \$489 Townhouse Suite (single) & \$499(double)
- \$799 Townhouse 3 bedroom (Townhouse plus two additional bedrooms (one room is smaller) and two additional baths.

Rates include a daily continental breakfast; add \$50 additional each day for extra persons, adults or children. There is a \$5 per Suite per night gratuity for all Suites with Parlor.

MANCHESTER VILLAGE, VERMONT

October is the perfect time to enjoy the picturesque foliage in Manchester, as well as wonderful weather to enjoy outdoor activities! A serene retreat from the outside world amidst pristine acres in Vermont, Manchester is home to numerous art, music and recreational events and you'll find once-in-a-lifetime activities that you won't find at any other resort:

- Learn how to handle a hawk at The British School of Falconry
- Discover the ancient sport of Archery
- Pursue outdoor precision at the Orvis Fly Fishing School
- Challenge yourself at the Rees Jones designed Gleneagles Golf Course, rated 59th Best Resort Golf Course in North America by Golf Digest in 2006

Other activities include:

- Mountain biking
- Horseback riding
- Hiking
- Kayaking/Canoeing
- Walking and jogging trails
- Shooting and hunting
- Equinox Preservation Trust (EPT), a non-profit organization created in 1993, is

dedicated to the protection and wise use of the wild plants on Mount Equinox

- Museums and Galleries
- Factory tours of Ben & Jerry's and Vermont Teddy Bears
- Shopping mecca with local shops, antiques & factory outlets
- Gourmet restaurants

TRAVELING TO THE EQUINOX

The Equinox
3567 Main Street Route 7A
Manchester Village, VT 05254
800-362-4747 • 802-362-4700

Train

The Albany-Rensselaer Station in nearby Rensselaer, New York, is served by 10 daily Amtrak trains from Penn Station in New York City (2 hrs). You can call the Equinox concierge to make arrangements (for a fee) to be picked up from the train station and driven to the hotel • 800-362-4747 (approx. 70 minutes).
www.amtrak.com (1.800.U.S.A.RAIL)

Driving

From New York: approximately 4 hours
From Albany Airport: approximately 70 min.
From Boston: approximately 3 1/2 hours
More detailed directions can be found at:
www.equinoxresort.com

RESERVATIONS & CUT-OFF DATE

Please complete and return the reservation form on page 6 as soon as possible to ensure confirmation of your reservation. The reservation form must be faxed or mailed with deposit to confirm. No phone reservations please, but you may call Reservations with questions about the resort or accommodations. 800-362-4747.

All reservations must be received by **August 30, 2007** (although this room block could be filled sooner) Reservations received after this date will be confirmed on an availability basis only.



& BREAST IMAGING

Optional Activities

OPTIONAL ACTIVITIES

The NYU organizers have planned the following activities and group meal functions during your stay at the Equinox. Please sign up IN ADVANCE and note the cancellation terms which will apply. You may sign up on the enclosed Activities Form found on page 7 of this brochure (or you may sign up for activities when you register online).

Wednesday, October 10, 2007

Main Arrival Day

Thursday, October 11, 2007

1:00–4:00pm

Falconry & Lunch

Lunch is served at the Taconic Tent behind the hotel. Experience the thrill of a lifetime with a magnificent hawk flying at your command. Founded in 1982, the school enjoys an international reputation for excellence. Learn how to handle and free-fly a bird of prey.

**If you prefer just to join the group for lunch, you may purchase a lunch ticket only.*

- Lunch & Falconry:
\$95 per adult or children ages 12 and up (minimum age for Falconry is 12) (maximum of 80 persons – sign up early)
- Lunch Only:
\$35 per adult, \$20 per child under 12, \$10 per toddler under 6

6:30–8:00pm

Welcome Reception

Registrants are welcome to join us for a welcome reception/buffet.

- Guest tickets are available at \$45 per adult, \$20 per child under 12, and \$10 per toddler under 6.

Friday, October 12, 2007

2:00pm

Golf Tee-Times

We have reserved two foursomes for golf this afternoon on the Gleneagles Golf Course, named after the sister hotel in Scotland. The Gleneagles Golf Course is a recipient of Golf Magazine's prestigious Silver Medal Award and is rated one of the top 75 golf courses in the U.S. by Golf Digest. Soft spikes are required. You will be able to charge these fees to your room.

- Greens Fee: \$104
 - Greens Fee with Cart: \$125
 - Club Rental: \$40 per set
 - Push Cart: \$10 per cart
- Price does not include 7% sales tax.*

2:00–4:00pm

Orvis-Group Fly Casting Instruction (2-hour lesson)

All group instruction is based on 1 instructor for every 4 students and includes use of Orvis equipment (fishing on Equinox pond). Please bring polarized sunglasses and sunscreen.

- \$120 per person (including gratuity and transportation)

2:00–5:00pm

Guided Hike

Join us for a "moderate" guided hike and enjoy the beautiful fall foliage and scenery that this area affords.

- \$25 per person (including gratuity)

Dinner on Your Own Tonight:

We will offer many restaurant suggestions for you in the area.

Saturday, October 13, 2007

2:00–4:00pm

Tour of Hildene with Private Guide

Located just a few miles away from the Equinox, Hildene was a summer home of Robert Todd Lincoln (only child of Abraham and Mary Todd Lincoln). You'll enjoy a private tour of the home and formal gardens (with views overlooking Battenkill Valley).

- \$30 per person (including transportation)



6:30–8:30pm

BBQ

Please enjoy your last night with the group at the Dormy Grill (Club House at the Equinox Golf Course) for a barbecue.

- \$55 per adult, \$25 per child under 12, \$10 per toddler under 6 (Plus Cash Bar)

Sunday, October 14, 2007

Noon–1:30pm

Sunday Brunch (private)

Our meeting will conclude around noon. A continental breakfast is provided early (near the meeting area), but you are also welcome to purchase brunch tickets to enjoy a special meal before you head home.

- \$30 per adult, \$20 per child under 12, \$10 per toddler under 6

OTHER ACTIVITIES

If none of these options appeal to you, you can also book a Spa treatment at the Avanyu Spa (call 802-362-7881 in advance), shop at some of the Manchester outlets, take a bicycle trip in the area, or go horseback riding (one-hour scenic trail rides are possible through the Equinox Preservation Trust on Mount Equinox). Canoeing and kayaking are also possible through the Concierge.

REFUND POLICY

A full refund for activities will be granted if written cancellation is sent via email to janice.ford-benner@nyumc.org by September 25th. After September 25th, no refunds will be possible for these activities/group functions.



Hotel Reservation Form

THE EQUINOX RESERVATION CARD

New York University Women's Imaging & Breast Imaging • October 11-14, 2007

These are the meeting dates, but our room block begins on Wednesday, October 10th and ends on Sunday, October 14th

Check-In: After 4 PM

Check-Out: By 11 AM

All reservations must be received by **August 30, 2007** (although this room block could be filled sooner).

Reservations received after this date will be confirmed on an availability basis only.

TYPE OF ACCOMMODATION REQUESTED

ROOM: \$379/Single \$389/Double

SUITE: \$550/Single \$560/Double

TOWNHOUSE: \$489/Single \$499/Double

\$799/3 bedroom

(Rates include a daily continental breakfast; add \$50 additional each day for extra persons, adults or children. There is a \$5 per Suite per night gratuity for all Suites with Parlor)

A 9% VT Lodging Tax per day will apply.

DEPOSIT/CANCELLATION POLICY:

All reservations must be secured with a deposit equal to one night's stay. Late arrivals or early departures will cause forfeiture of deposit. Cancellations that occur within 3 weeks of October 10, 2007 will result in forfeiture of the deposit.

Cancellations that occur prior to the 3-week cut-off will receive a full refund.

Please complete and return this form as soon as possible to ensure confirmation of your reservation.

This reservation must be faxed or mailed with deposit to confirm. No phone reservations please.

PLEASE PRINT

Arrival Date _____ Departure Date _____

Name _____

Sharing With _____

Child(ren) Names/Ages _____

Hospital or Business Name _____

Address _____

City/State/Zip _____

Daytime Telephone (_____) _____

E-mail _____

Special Requests _____

PAYMENT INFORMATION (American Express, Visa, and Mastercard)

Credit Card Type _____ Expiration Date _____

Account # _____ Amount (1 night deposit): _____

Signature _____

PLEASE RETURN THIS FORM WITH DEPOSIT TO:
THE EQUINOX - c/o GROUP RESERVATIONS
PO Box 46, MANCHESTER VILLAGE, VERMONT 05254
PHONE:(800) 362-4747 FAX: (802) 362-7775



Course Registration Form



NYU DEPARTMENT OF RADIOLOGY

Fall into Women's Imaging: An NYU Autumn Update of Breast Imaging and Women's Imaging Essentials

Fax to **212-263-3959**

PARTICIPANT INFORMATION (Please Print Clearly)

Name _____

Address _____

City _____

State _____

Zip _____

Daytime Phone _____

Fax _____

Email _____
(required if you want to receive a confirmation receipt)

Degree _____

Specialty _____

Sub-Specialty _____

Dietary Restrictions _____

REGISTRATION FEES

Full Fees (Physicians) **Discounted Fees** (see below for qualifications)

- \$875 per attendee \$545 discounted fee*

*Discounts apply to NYU School of Medicine alumni, former residents & fellows, techs, physicians and M.D.s employed by the Dept. of Veterans Affairs and full-time active military personnel, and Canadian and overseas physicians.

Reason for discount _____

PAYMENT METHOD

- Check in U.S. Dollars** payable to NYU Department of Radiology
- Credit Card**

Card Member's Name (print carefully) _____

Card # _____

Amount to be Charged: \$ _____

Bill to: Visa Mastercard American Express

Exp Date: (MM/YYYY) _____ / _____

Signature (required to process) _____

- International Postal Money Order** (for overseas participants not wishing to submit credit card information)

E-MAIL CONFIRMATIONS: A confirmation will be sent to you by e-mail if you provide your e-mail address. We no longer send out written or faxed confirmations.

REFUND POLICY: An administrative charge of \$75 will be assessed for cancellations made in writing one month or more prior to the start of a course. Refunds will be possible after this date subject to a \$150 fee.

COURSE CANCELLATION POLICY: In the unusual circumstance that this course is cancelled, two weeks' notice will be provided and full tuition refunded. The NYU Post-Graduate Medical School is not responsible for any airfare, hotel or other costs incurred.

EDUCATIONAL NEEDS

If there is a specific question or topic relating to this course, please submit it on the registration form or on the website when registering online.

OPTIONAL ACTIVITIES – NYU RADIOLOGY

Advance Registration Required for all tours/activities/group functions prior to **September 25th, 2007.**

Thursday Buffet Lunch and Afternoon of Falconry	# _____	@ \$95 per adult (including children ages 12 and up)	\$ _____
Thursday Lunch Only	# _____	@ \$35 per adult	\$ _____
	# _____	@ \$20 per child under 12.....	\$ _____
	# _____	@ \$10 per toddler under 6.....	\$ _____
Thursday Welcome Reception/Bufferet (included for Registrants) • 6:30-8:00pm ...	# _____	@ \$45 per adult.....	\$ _____
<i>Please purchase tickets for accompanying guest/spouses/family. Your ticket is complimentary</i>	# _____	@ \$20 per child under 12.....	\$ _____
	# _____	@ \$10 per toddler under 6.....	\$ _____
Friday Golf	(fees on page 5).....		\$ <u>charged to your room</u>
<i>You will be able to charge all golf fees to your room, but you must register on this form to reserve a space.</i>			
Friday Orvis – Group Fly Casting Instruction • 2:00-4:00pm	# _____	@ \$120	\$ _____
Friday Guided Hike	# _____	@ \$25.....	\$ _____
Saturday Tour of Hildene with Private Guide • 2:00-4:00pm	# _____	@ \$30	\$ _____
Saturday Optional BBQ • 6:30-8:00pm	# _____	@ \$55 per adult.....	\$ _____
	# _____	@ \$25 per child under 12.....	\$ _____
	# _____	@ \$10 per toddler under 6.....	\$ _____
Sunday Brunch • Noon-1:30pm	# _____	@ \$30 per adult	\$ _____
	# _____	@ \$20 per child under 12	\$ _____
	# _____	@ \$10 per toddler under 6.....	\$ _____
TOTAL OF ACTIVITIES			\$ _____

PAYMENT METHOD: **Check in U.S. Dollars** payable to NYU Department of Radiology **Credit Card** (See Top Half of Form)

REFUND POLICY: A full refund will be granted if written cancellation is sent via email to janice.ford-benner@nyumc.org by September 25th. After September 25th, no refunds will be possible for these activities/group functions.

IN CASE OF QUESTIONS, CONTACT:

Michelle Koplik, Program Manager
(212) 263-3936 • Michelle.Koplik@nyumc.org

Janice Ford-Benner, Director
(212) 263-3923 • Janice.Ford-Benner@nyumc.org

WHERE TO MAIL OR FAX

Michelle Koplik • Fax (212) 263-3959
NYU Medical Center • Dept of Radiology
560 1st Avenue, HW-231 • New York, NY 10016

Clip & Mail

DEPARTMENT OF RADIOLOGY NYU CME Calendar

www.radcme.med.nyu.edu

2007

January 11–19.....	NYU IMAGING THROUGH VIETNAM AND CAMBODIA.....	Vietnam and Cambodia
January 29–February 2.....	IMAGING UPDATE AT HUALALAI (NEURORADIOLOGY/HEAD & NECK).....	Four Seasons, Hualalai Big Island of Hawaii
February 5–9.....	IMAGING UPDATE IN SNOWMASS.....	Snowmass, CO
March 12–16.....	NYU CLINICAL IMAGING ESSENTIALS IN DEER VALLEY.....	Deer Valley, Utah
April 2–6.....	DIAGNOSTIC IMAGING UPDATE.....	Westin Resort (Brand New) St. Maarten
April 27–28.....	VIRTUAL COLONOSCOPY WORKSHOP.....	South Beach, Miami
June 1–3.....	4TH ANNUAL SPORTS MEDICINE IMAGING COURSE.....	Hospital for Joint Disease (New York, NY)
June 25–29.....	SUMMER RADIOLOGY PRACTICUM IN THE TETONS.....	Four Seasons, Jackson Hole, Wyoming
September 28 – 30.....	MRI: CLINICAL STATE OF THE ART.....	NYU Medical Center (New York, NY)
October 11–14.....	FALL INTO WOMEN'S IMAGING.....	The Equinox, Manchester, Vermont
November 9–10.....	VIRTUAL COLONOSCOPY WORKSHOP.....	New York, NY
December 17–22.....	26TH HEAD TO TOE IMAGING CONFERENCE.....	New York, NY

2008

January 8–11.....	EMERGENCY IMAGING ON NEVIS.....	Four Seasons, Nevis
February 4–8.....	CLINICAL IMAGING ON LANA'I.....	Four Seasons, Lana'i (Hawaii, formerly Manele & Koele
March 3–7.....	IMAGING UPDATE IN SNOWMASS.....	Snowmass, CO
March 17–21.....	CLINICAL IMAGING ESSENTIALS.....	Deer Valley, UT
Spring.....	VIRTUAL COLONOSCOPY WORKSHOP.....	South Beach, Florida
Spring.....	5TH ANNUAL SPORTS MEDICINE IMAGING CONFERENCE.....	New York City
June 30–July 3 (tentative).....	SUMMER DIAGNOSTIC UPDATE ON THE CAPE.....	Chatham Bars, Cape Cod
July 28–31.....	NYU IMAGING IN SCOTLAND.....	Edinburgh, Scotland
December 15–20.....	27TH ANNUAL HEAD TO TOE IMAGING CONFERENCE.....	New York, NY

More to be announced for 2008

For More Information, Contact:

Michelle R. Koplik
Program Manager – Education and Corporate Relations
NYU Medical Center • 560 1st Avenue (HW-231)
New York, NY 10016
Telephone: (212) 263-3936
E-mail: michelle.koplik@nyumc.org

Janice Ford Benner
Director – Education & Corporate Relations
NYU Medical Center • 560 1st Avenue (HW-231)
New York, NY 10016
Telephone: (212) 263-3923
E-mail: janice.ford-benner@nyumc.org

SCHOOL OF
MEDICINE



NEW YORK UNIVERSITY

New York University
School of Medicine
Department of Radiology
560 1st Avenue, TCH-HW-231
New York, NY 10016

Non-Profit Organization
U.S. Postage
Paid
New York University



October 11–14, 2007

The Equinox
Manchester Village, Vermont

Fall Into Women's Imaging