

SCHOOL OF  
MEDICINE



NEW YORK UNIVERSITY

Sponsored by the  
NYU Post Graduate Medical School  
and the Department of Radiology

Summer 2007

# Summer Musculoskeletal Radiology Practicum *in the Tetons*



**June 25-29, 2007**

Four Seasons Resort  
at The Grand Teton National Park  
Jackson Hole, Wyoming



# Summer Musculoskeletal Overview & General Information

## Summer Musculoskeletal Radiology Practicum

Jackson Hole, Wyoming  
June 25-29, 2007

### Participating Faculty

#### Course Director

Zehava Sadka Rosenberg, M.D.

#### NYU Faculty

George C. Nomikos, M.D.

Assistant Professor of Radiology

Zehava Sadka Rosenberg, M.D.

Professor of Radiology

Leon D. Rybak, M.D.

Assistant Professor of Radiology

#### Guest Faculty

David P. Fessell, M.D.

Chief, Division of Musculoskeletal Radiology  
William Beaumont Hospital  
Royal Oak, Michigan  
Associate Professor Clinician-Educator  
Wayne State University School of Medicine  
Detroit, Michigan

Ronald L. Grelsamer, M.D.

Associate Professor of Orthopaedic Surgery  
Mount Sinai School of Medicine  
Chief, Patellofemoral Reconstruction  
Department of Orthopaedic Surgery  
New York, New York

Richard J. Herzog, M.D., FACR

Chief, Division of Teleradiology  
Co-Director, Research  
Attending Radiologist  
Department of Radiology and Imaging  
Hospital for Special Surgery  
Professor of Radiology  
Weill Medical College of Cornell University  
New York, New York

*The Post-Graduate Medical School of the New York University School of Medicine is committed to improving patient care through continuing medical education.*

### Purpose Statement

Due to the rapidly evolving field of musculoskeletal radiology, there is a need for maintaining cutting-edge knowledge of new clinical applications, techniques and interpretation. Maintenance of certification requires continued review of essential imaging techniques in all areas of radiology.

### Target Audience

This course is intended for practicing radiologists and orthopedic surgeons in academic and private practice.

### Course Description

This intensive four-day course is designed to provide the radiologist or orthopedic surgeon with state-of-the-art, cutting-edge advances in musculoskeletal imaging. Didactic lectures will offer an in-depth discussion of a variety of musculoskeletal and neurological disorders of the spine, shoulder, elbow, hip, knee and ankle. Advances in MRI, ultrasound and interventional procedures of the musculoskeletal and spinal system will be presented with emphasis on practical applications. The lectures, given by experts in their fields, will provide an approach to image analysis from the point of views of both the radiologist and orthopedist.

### Educational Objectives

1. Based on new advances in MR techniques, the attendees will optimize their ability to detect and characterize common imaging features of a variety of spinal disorders, thereby providing better pre-surgical and post-operative patient care.
2. Given patients who present with chronic or acute knee pain, the attendees will more effectively diagnose a broad spectrum of internal knee disorders based on state of the art MR imaging applications.
3. Using up to date imaging protocols when examining the hip region, the attendees will improve their interpretation skills and thereby be able to narrow the differential diagnosis of tendon, muscle and osseous disorders of the hip.
4. Based on advances in MR imaging criteria of nerve disorders, the attendees will improve their ability to detect entrapment neuropathies of the upper and lower extremity in the adult patient and, for better patient care, differentiate them from other more common musculoskeletal disorders.
5. Given up-to-date imaging criteria, the attendees will improve their ability to assess imaging features of soft tissue tumors and thereby be able to categorize patients into those who will benefit from conventional medical management versus those who will require referral for surgical procedure.
6. Based on the latest standard-of-care musculoskeletal interventional procedures, the attendees will develop a comprehensive plan for appropriate evaluation and treatment of patients with chronic pain.
7. Given the advances in MRI and ultrasound, the attendees will better narrow their differential diagnosis and thus improve their interpretation skills when assessing studies of patients suffering pain and tenderness in the ankle and foot region.
8. Given a greater understanding of the differing approaches of the orthopedist and radiologist to the same disease entity, the attendees will improve their interdisciplinary communication skills and thus avoid potentially harmful delivery of information to the referring physician.

### Accreditation Statement

The NYU Post-Graduate Medical School is accredited by the Accreditation Council for Continuing Medical Education (ACCME) to provide continuing medical education for physicians.

### Credit Designation

The NYU Post-Graduate Medical School designates this educational activity for a maximum of 18.25 *AMA PRA Category 1 credit(s)*<sup>™</sup>. Physicians should only claim credits commensurate with the extent of their participation in the activity.

Monday, June 25, 2007	4.75 credits
Tuesday, June 26, 2007	4.0 credits
Wednesday, June 27, 2007	free day
Thursday, June 28, 2007	3.75 credits
Friday, June 29, 2007	4.75 credits
Optional Ultrasound Workshop - Tuesday 1.0 credit OR Thursday 1.0 credit	
Total credits for course	17.25
Workshop credits	1.00
(since one may attend only one workshop)	

### Disclosure Statement

The NYU Post-Graduate School adheres to ACCME Essential areas and policies, including the Standards for Commercial Support regarding industry support of continuing medical education. In order to resolve any identified conflicts of interest, disclosure information is provided during the planning process to ensure resolution of any identified conflicts. Disclosure of faculty and commercial relationships as well as the discussion of off-label or investigational use of any drug, device or procedure by the faculty or procedure by the faculty will be fully noted at the meeting.

### Registration Information

Registration fees are \$925 for this four-day course (\$695 for residents, fellows, NYU alumni, retirees, Canadian and overseas physicians and V.A. employees). On-line registration is the fastest and easiest way to register and be sure to provide your email address.

### Cancellation Policy

If you need to cancel your enrollment, a \$75 service charge will be assessed for your tuition payment if written notice is received at least 30 days in advance and a \$150 service fee for cancellations made within 30 days. No refunds are possible if written notification is not sent.

### Special Needs

The Post-Graduate Medical School of the New York University School of Medicine, in compliance with the legal requirements of the Americans with Disabilities Act, requests that any participant of this CME course who is in need of accommodations to submit written requests to our office at least one month prior to the course start date.

### Dietary Restrictions

Please indicate any dietary restrictions on the registration form.

### Special Topics/Questions

If there is a special topic or question that would help fulfill your educational needs, please submit it on the registration form.

# Radiology Practicum Travel & Hotel Information

## Four Seasons Resort, Jackson Hole, Wyoming

Surrounded by the vistas of the spectacular Teton Mountain range, Four Seasons Resort Jackson Hole offers unsurpassed luxury nestled between majestic mountains and the wildflower meadows of Teton Valley. The resort offers 151 guest rooms, including 18 suites, and all guest rooms are generously sized and are welcoming and contemporary with western touches of leather, natural wood and stone finishes. All rooms have high-speed internet. Every guest room has its own private balcony or terrace with views overlooking the courtyard, the valley or the mountain. In addition to all of the many Four Seasons amenities and exquisite world-reknown service and personal attention to guests, the resort has a state-of-the-art Fitness Center and 11,685 sq ft Spa featuring 16 treatment rooms plus a year-round outdoor swimming pool and three hot-spring style whirlpools. The Four Seasons offers a Kids' and Teenagers Club Entertainment Center Jackson Hole Airport is 20 miles away (approximately 25 minutes away) from the Four Seasons Resort, Jackson Hole.

### Room Rates

The following special room rates have been confirmed for NYU attendees and guests and are available ONLY through Travel Planners, Inc.:

	Group Rate Single/Double	Public Rate Single/Double
<b>Superior Room</b> (Courtyard View)	<b>\$445/465</b>	<b>\$660/680</b>
<b>Deluxe Room</b> (Valley View)	<b>\$470/490</b>	<b>\$710/730</b>
<b>Premium Room</b> (Mountain View)	<b>\$520/540</b>	<b>\$785/805</b>

Above rates include daily Continental Breakfast and are effective for arrival on Saturday, June 23, 2007, through departure on Sunday, July 1, 2007. Extended stays are subject to availability. Rates above are single or double occupancy, plus government tax and occupancy fee (currently 12%) per room, per day, portorage charges of \$10 per person, round trip, and housekeeping gratuities of \$3 per room per day, payable upon checkout. Children under 18 stay free in room with parents/guardian using existing bedding. Additional \$50 per person per night plus tax and gratuities will be charged for each person 18 and over sharing a room. Maximum 3 adults or 2 adults and two 2 children per room. Credit card or \$1100 deposit is required for booking. If providing a credit card, the hotel will charge 2 nights deposit, including tax, approximately 45 days prior to arrival.

Please use the convenient on-line hotel reservation link when registering for this meeting ([www.radcm.med.nyu.edu](http://www.radcm.med.nyu.edu)) and take care of both at the same time.



## Jackson Hole, Wyoming

([www.jacksonhole.com](http://www.jacksonhole.com))

Jackson is the name of the lake and the town and Jackson Hole is the name of the valley and the area.

Downtown Jackson is only 15 minutes away from the Four Seasons Resort with the Historical Society and Museum and, of course, tremendous restaurants, art galleries, and shopping to please every taste and budget. The kids will love the daily 6:15 p.m. shoot-out on the Town Square in Jackson and perhaps the whole family will enjoy the rodeo.

## Grand Teton National Park

### Jackson Hole, Wyoming

Welcome to Grand Teton National Park, where the majestic Teton Range rises impressively along the eastern edge of the scenic valley known as Jackson Hole. The Grand Teton National Park is home to countless species of wildlife and some of the most spectacular scenery to be found on earth. It is a very special place filled with the cleanest air, clearest water and the most dramatic and majestic views imaginable.

Activities in the park and Jackson Hole abound... fly-fishing (blue-ribbon trout fishing is a hallmark of this area), hiking on more than 250 miles of maintained trails (and this time of year, you should expect to see wildflowers), floating or white-water rafting on the famed Snake River, horseback riding galore, golf at either Teton Pines or Jackson Hole Golf & Tennis Club, and tennis. Glider tours, paragliding and hot-air ballooning are also offered now for unforgettable experiences over the spectacular Teton Mountain Range.

We think you may enjoy the brand-new Performing Arts Pavilion in Jackson which is expected to open in mid-June. Check out the website in advance for performances and tickets ([www.jhcenterforthearts.org](http://www.jhcenterforthearts.org)). Unfortunately, the Grand Teton Music Festival is not opening until mid-July in 2007 but we know you will enjoy the type of performances anticipated for the new pavilion.

We think you could certainly enjoy an entire week visiting this park but note that the southern part of Yellowstone National Park is only 60 miles away; we have arranged a guided tour so you can visit Yellowstone on Wednesday or you may consider staying a few days after the meeting to see Yellowstone more leisurely (accommodations should be booked far in advance).

## General Information

### Deadline for Reservations and Final Payment

**May 4, 2007**

### Changes

**\$35 per change**

### Cancellations

**Hotel** – \$50 at any time. After May 4, 2007, no refund unless room is resold. Documented emergencies will be considered.

**Optional Tours** – After March 4, 2007, no refund.

## Hotel and Air Travel Arrangements

Travel Planners, Inc. (TPI) is the appointed Travel Coordinator. Registration for this conference will be handled through the New York University (NYU) Department of Radiology.

## Discounted Airline Transportation

Low, promotional fares to Jackson Hole are limited and early bookings are recommended. An air itinerary, fare (including \$35 per ticket service fee) and booking policies will be provided for approval prior to ticketing. Benefits include: \$200,000 free flight insurance and frequent flyer enrollment. Call 800-810-2695, 8:30am to 5:30pm Central Time, Monday through Friday and ask for the NYU air agent.

## Rental Cars

Reservations may be made in conjunction with your air reservations for no additional service fee. There will be a \$20 service fee for booking car reservations only.



# Summer Musculoskeletal Optional Activities

## Optional Activities

All activities below have been arranged as private tours so as not to conflict with the meeting agenda and are offered exclusively to NYU attendees and guests. These tours are available only through Travel Planners, Inc. the appointed agent for NYU.

### Monday, June 25, 2007

#### Whitewater Rafting

2:00pm to 6:00pm • \$150 per adult; \$92 per child (6-12 years)

As the Snake River leaves the relative tranquility of Jackson Hole, it makes its way south until it cuts into the Snake River Canyon. Here the river picks up speed and intensity and begins to create the best whitewater run in the region. Tall pines, interesting geology and crystal clear water all come together to make the Snake River Canyon a great rafting experience. Skilled guides will instruct in river skill, with safety being the highest priority. Anticipation grows as the legendary Lunch Counter Rapids and the rodeo ride that is Big Kahuna approach. Cottonwood is the last major rapid of the trip. What a way to finish! It is the longest rapid, and with its big rollers in high water and numerous "holes" in low water, it is also the most fun. It will leave you wet and exhilarated. Suggested attire: a bathing suit, sunglasses with strap, river sandals or old sneakers. Bring a waterproof camera, extra dry clothes for the return transfer, including a sweatshirt or long sleeve shirt. Includes: round trip transfers, professional rafting guides, safety equipment, wet suit and booties, taxes, user fees, and gratuities. Minimum 8 person.

### Tuesday, June 26, 2007

#### Golf Outing

2:00pm tee time • \$299 per person

Golfing in the high altitude of the Rocky Mountains is a dream for many golfers. Enjoy the soaring mountain peaks, the pristine waters and glorious mountain air as part of your golfing experience. Teton Pines Golf Club is a private 18-hole, Arnold Palmer designed championship course. Golf Digest lists it among the "Top 75 Golf Resorts in America." Conservative golf attire, soft spikes required. Lunch can be purchased at the course. Includes: round trip transportation, green fees, baggage handling, cart, use of practice area, taxes and gratuities. Minimum 8 persons.

#### Snake River Scenic Float Trip & Dinner

5:00pm to 8:30pm • \$135 per adult/\$75 per child (ages 6-12 - minimum age is 6 years old.)

Beneath the towering peaks of the Teton Range, the Snake River threads its many channels through a landscape hardly touched by human hands. Sometimes swift, sometimes meandering, it sustains an environment rich with spruce, willows, beavers, moose, osprey, and eagles. The Snake River is the most distinctive waterway passing through Jackson Hole. A myriad of species rely on it for their habitat. Floating the river by paddle raft allows for the quiet approach necessary to heighten the likelihood of wildlife sightings. Enjoy exploring this place of

peace and beauty while floating with an experienced guide and naturalist. Wear casual clothing, sunscreen, sunglasses, and a light jacket. Bring a waterproof camera. Includes: round trip transportation, river guide, poncho if needed, life preservers, park entrance fees, bottled water and snack, dinner, taxes and gratuities. Minimum 8 persons.

### Wednesday, June 27, 2007

#### Yellowstone National Park All Day Tour

8:00am to 8:00pm • \$400 per person

The geothermal wonders of Yellowstone National Park are evidence of one of the world's largest active volcanoes. Yellowstone, as a whole, possesses close to 60% of the world's geysers. These hydrothermal wonders were so remarkable to early settlers that they referred to the land as "the place where hell bubbles up." In addition to exploring these unique areas of thermal activity, view the "Grand Canyon of Yellowstone" where the famous Upper and Lower Falls flow from the Yellowstone River. Within a short viewing distance of Old Faithful and Old Faithful Inn, is one of the few remaining log hotels in the US and a masterpiece of rustic architecture. Wear casual clothing and a light jacket. Includes: round trip transfers, naturalist guide, park entrance fees, binoculars and spotting scope, bottled water and snack, lunch, taxes and gratuities. Minimum 5 persons.

#### Private Water Fly Fishing

8:30am to 12:30pm • \$285 per person (Subject to change depending upon the best water available at time of trip.)

Meandering through some of the most scenic stretches of land on earth shadowed by the soaring peaks of the Tetons is an abundance of spring creeks and tributaries to be found. With access to crystal clear private waters, these fishing locations will truly test your skills. From the challenging Fish Creek to the incredible Lake Creek, wade through waters to catch native cutthroats in waters best suited for the "wild country" seekers. Wear layered clothing, polarized sunglasses, hat, sunscreen and bug spray. Includes: Round trip transportation, access to private waters, local guide, all necessary equipment, Wyoming fishing license, snack, taxes and gratuities. Minimum 2 persons.

### Thursday, June 28, 2007

#### Guided Hike

2:00 to 6:00pm • \$127 per person.

The first human visitors to Jackson Hole came on foot, and this is still the best way to truly appreciate the beauty of the area. National Parks, National Forests and Wilderness Areas surround Jackson Hole. Finding a great place to hike is easy; it's deciding where to go that can be difficult. A local naturalist guide will choose an easy, yet beautiful hike that will test your stamina, while explaining the alpine flora and fauna that call the high elevations home. Wear casual clothing, light jacket, hat and sturdy shoes. Bring your camera and binoculars. Includes: round trip transportation, naturalist guide, backpack or fannypack, ponchos if needed, water bottle and snack, taxes and gratuities. Minimum 7 persons.



#### Horseback Riding

2:30 to 4:30pm • \$85 per person (Minimum age 8 years to ride on own.)

There is no shortage of inspiring scenic spots in Jackson Hole, but some of the most incredible place take work or knowledge to get to! Saddle up and ride into the backcountry with a guide and a well-trained horse. This is an opportunity to access some splendid areas of the Tetons up close and personal. See "The Last and the Best of the Old West." Wear casual attire, jeans, closed toe shoes. Includes: experience guide, use of helmet if desired, taxes and gratuities.

## Disclaimer Notice

Travel Planners, Inc., NYU Department of Radiology, and their respective agents, act only as service provider in matters pertaining to the ordering, reservation, purchase and use of hotel accommodations and transportation facilities. They engage only in arrangements with independent contractors whom they reasonably believe to be competent to supply such accommodations and transportation. Use of the services described above affirms that the liabilities and responsibilities of Travel Planners, Inc., NYU Department of Radiology, and their respective agents, officers, directors and employees are limited only to exercise reasonable care in the selection of the independent contractors and suppliers. No guarantees or warranty is provided, and Travel Planners, Inc., NYU Department of Radiology, and their agents, officers, directors and employees waive and deny herewith expressly any responsibility and liability whatsoever and without limit for any act, omission, event, damage and loss, and are herewith held harmless by client against any claim, whatever its reason or nature, including but not limited to any legal resolve and expense. A dispute shall not constitute approval to refuse, dismiss, refrain from or delay making prompt payments to Travel Planners, Inc., NYU Department of Radiology, or to their contractors and suppliers with regards to ordered services. Any claim awarded by law shall in no instance exceed the payment made and received for the services rendered, less an appropriate administrative charge.

## Airlines

Airlines concerned are not to be held responsible for any act, omission, or event during the time passengers are not on board their planes or conveyances. The passenger contract (ticket) in use by the airlines concerned, when issued, shall constitute the sole contract between the airlines and the purchaser of those tours and/or passenger.

# Radiology Practicum Program Information

## Sunday, June 24, 2007

- 4:00pm **Meeting Registration**  
(at the Four Seasons Resort)
- 6:00pm **Welcome Reception**  
(at the resort)

## Monday, June 25, 2007

- 7:00pm **Registration & Continental Breakfast**
- 7:40pm **Welcome and Introduction**  
Zehava Sadka Rosenberg, M.D.
- Moderator: Zehava Sadka Rosenberg, M.D.*
- 7:45am **PHYSICAL EXAMINATION OF THE KNEE**  
Ronald P. Grelsamer, M.D.
- 8:30am **MRI OF KNEE MENISCI**  
George C. Nomikos, M.D.
- 9:15am **PATELLO-FEMORAL ARTICULATION:  
HIDDEN TREASURES**  
Ronald P. Grelsamer, M.D.
- 10:00am **Break**
- 10:15am **MRI OF KNEE LIGAMENTS**  
George C. Nomikos, M.D.
- 11:00am **KNEE AND HIP ARTHRITIS: IMAGING  
AND SURGICAL OPTIONS**  
Ronald P. Grelsamer, M.D.
- 11:45am **MUSCULOSKELETAL ULTRASOUND:  
TECHNIQUE & PRACTICAL APPLICATIONS**  
David P. Fessell, M.D.
- 12:15pm **INTERESTING CASES OF THE DAY**  
Zehava Sadka Rosenberg, M.D.
- 12:30pm **Questions & Discussion with the  
Morning Faculty**
- 12:45pm **Adjournment**



## Tuesday, June 26, 2007

- 7:30am **ULTRASOUND WORKSHOP AND  
CONTINENTAL BREAKFAST**  
(space is limited; the same workshop is offered  
on Thursday and advance registration is required)  
David P. Fessell, M.D.  
Leon D. Rybak, M.D.
- Moderator: Leon D. Rybak, M.D.*
- 8:30am **MRI OF THE HIP**  
George C. Nomikos, M.D.
- 9:15am **HIP & KNEE REPLACEMENT IMAGING:  
WHAT IS THE SURGEON LOOKING FOR?**  
Ronald P. Grelsamer, M.D.
- 10:00am **Break**
- 10:15am **MRI OF SOFT TISSUE TUMORS**  
George C. Nomikos, M.D.
- 11:00am **A PRACTICAL APPROACH TO COMMON  
MUSCULOSKELETAL PROCEDURES**  
Leon D. Rybak, M.D.
- 11:45am **THE TOWER OF BABEL:  
CONFUSING NOMENCLATURE IN  
ORTHOPEDIC IMAGING**  
Ronald P. Grelsamer, M.D.
- 12:15pm **INTERESTING CASES OF THE DAY**  
Zehava Sadka Rosenberg, M.D.
- 12:30pm **Questions & Discussion with the  
Morning Faculty**
- 12:45pm **Adjournment**

## Wednesday, June 27, 2007

*Free Day*

### Acknowledgements

The organizers acknowledge the educational support received from the following organizations:

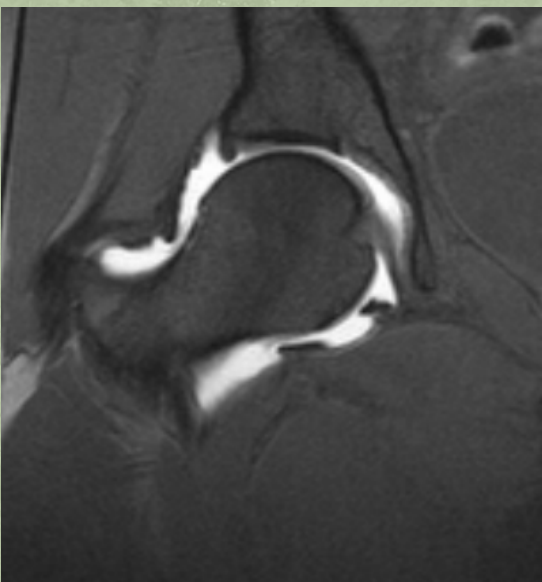
**BERLEX LABORATORIES**  
**SIEMENS MEDICAL SOLUTIONS**

## Thursday, June 28, 2007

- 7:30am **ULTRASOUND WORKSHOP AND  
CONTINENTAL BREAKFAST**  
(space is limited; the same workshop is offered  
on Tuesday and advance registration is required)  
David P. Fessell, M.D.  
Leon D. Rybak, M.D.
- Moderator: George C. Nomikos, M.D.*
- 8:30am **SPINE SURGERY AND POST-OP  
COMPLICATIONS**  
Leon D. Rybak, M.D.
- 9:15am **MRI OF ANKLE LIGAMENTS**  
Zehava Sadka Rosenberg, M.D.
- 10:00am **Break**
- 10:15am **COMPRESSIVE NEUROPATHIES OF THE  
LOWER EXTREMITY**  
Zehava Sadka Rosenberg, M.D.
- 11:00am **US OF THE ANKLE**  
David P. Fessell, M.D.
- 11:45am **MRI OF ANKLE TENDONS**  
Zehava Sadka Rosenberg, M.D.
- 12:30pm **Questions & Discussion with the  
Morning Faculty**

## Friday, June 29, 2007

- 7:15am **Continental Breakfast**
- Moderator: Zehava Sadka Rosenberg, M.D.*
- 7:45am **MRI OF THE MIDFOOT**  
Zehava Sadka Rosenberg, M.D.
- 8:30am **MRI OF SHOULDER INSTABILITY**  
Richard J. Herzog, M.D., FACR
- 9:15am **US OF THE SHOULDER**  
David P. Fessell, M.D.
- 10:00am **Break**
- 10:15am **MRI OF THE ELBOW**  
Leon D. Rybak, M.D.
- 11:00am **COMPRESSIVE NEUROPATHIES OF THE  
SHOULDER AND ELBOW**  
Zehava Sadka Rosenberg, M.D.
- 11:45am **IMPINGEMENT SYNDROMES OF  
THE EXTREMITIES**  
Leon D. Rybak, M.D.
- 12:30pm **Questions and Discussion**
- 12:45pm **Program Evaluation  
and Adjournment**



# Reservation Form • Travel Planners

## New York University Medical Center, Department of Radiology

### Four Seasons Resort, Jackson Hole • June 25–29, 2007

Deadline for Reservations and Payment: **May 4, 2007**

Reservations may be booked online at: <https://www.tpires.com/nyux/index.htm>

#### Book Online or Complete and Return to:

Travel Planners, Inc.

7550 IH10 West, Suite 1300

San Antonio, TX 78229

Phone: 210-341-8131

Fax: 210-341-5252

E-Mail: NYU@tpires.com

**IMPORTANT: NAMES(S) AS SHOWN BELOW MUST MATCH PHOTO DOCUMENTATION OR THE AIRLINES WILL DENY BOARDING.**

Last Name \_\_\_\_\_ First \_\_\_\_\_

Spouse/Guest \_\_\_\_\_

Child(ren) \_\_\_\_\_ Age \_\_\_\_\_ Child(ren) \_\_\_\_\_ Age \_\_\_\_\_

Mailing Address  Home  Office \_\_\_\_\_

City/State/Zip \_\_\_\_\_

Home Phone (\_\_\_\_\_) \_\_\_\_\_ Business Phone (\_\_\_\_\_) \_\_\_\_\_

Fax (\_\_\_\_\_) \_\_\_\_\_ E-mail \_\_\_\_\_

### Airline Reservations

Arrange air transportation from (city) \_\_\_\_\_

To arrive in Jackson Hole on (date) \_\_\_\_\_ and return on (date) \_\_\_\_\_

Airline Preference (if any) \_\_\_\_\_ Frequent Flyer # \_\_\_\_\_

Seating Preference:  Window  Aisle

### Hotel Reservations • Four Seasons Resort, Jackson Hole

(Please place a 1, 2, and 3 to indicate your category preference)

\_\_\_\_\_ Superior Room @ \$445 sgl/\$465 dbl \_\_\_\_\_ Deluxe Room @ \$470 sgl/\$490 dbl \_\_\_\_\_ Premium Room @ \$520 sgl/\$540 dbl

Arrival Date \_\_\_\_\_ Departure Date \_\_\_\_\_ # Persons in room \_\_\_\_\_

Special Requests \_\_\_\_\_

*If you have special needs, please attach a letter.*

### Payment Summary

Hotel Deposit(s) (if not providing a credit card)\* .....# \_\_\_\_\_ Room(s) @ \$1100 .....\$ \_\_\_\_\_

Optional Activities.....# \_\_\_\_\_ Rafting (Mon. 6/25) @ \$150 (adult) .....\$ \_\_\_\_\_

# \_\_\_\_\_ Rafting (Mon. 6/25) @ \$92 (child 6–12).....\$ \_\_\_\_\_

# \_\_\_\_\_ Golf (Tue. 6/26) @ \$299.....\$ \_\_\_\_\_

# \_\_\_\_\_ Float Trip (Tue. 6/26) @ \$135 (adult).....\$ \_\_\_\_\_

# \_\_\_\_\_ Float Trip (Tue. 6/26) @ \$75 (child 6–12).....\$ \_\_\_\_\_

# \_\_\_\_\_ Yellowstone (Wed. 6/27) @ \$400.....\$ \_\_\_\_\_

# \_\_\_\_\_ Fly Fishing (Wed. 6/27) @ \$285.....\$ \_\_\_\_\_

# \_\_\_\_\_ Hiking (Thu. 6/28) @ \$127.....\$ \_\_\_\_\_

# \_\_\_\_\_ Horseback Riding (Thu. 6/28) @ \$85.....\$ \_\_\_\_\_

TOTAL .....\$ \_\_\_\_\_

### Payment Method

**Check Enclosed** made payable to NYU/Travel Planners, Inc.

**Credit Card** ( Visa  MasterCard  American Express) **only.**

Hotel Guarantee  Optional Activities  Airline Tickets

Account # \_\_\_\_\_ Exp. Date \_\_\_\_\_

Billing Name \_\_\_\_\_ Signature \_\_\_\_\_ Date \_\_\_\_\_

**I have read and understand the booking/cancellation policies as outlined.**

Signature \_\_\_\_\_ Date \_\_\_\_\_

*\*The hotel will charge the required deposit to your credit card approximately 45 days prior to arrival.*

# Course Registration Form

## NYU Department of Radiology

Summer Musculoskeletal Radiology Practicum • June 25–29, 2007 • Jackson Hole, Wyoming

Online  
Registration  
is the Fastest  
Method. Go to  
[www.radcme.  
med.nyu.edu](http://www.radcme.med.nyu.edu)

Online Registration is fast and easy.  
Go to [www.radcme.med.nyu.edu](http://www.radcme.med.nyu.edu)  
or Fax to 212-263-3959

### Participant Information

Please Print Clearly

Name \_\_\_\_\_

Address \_\_\_\_\_

City \_\_\_\_\_

State \_\_\_\_\_

Zip \_\_\_\_\_

Daytime Phone \_\_\_\_\_

Fax \_\_\_\_\_

Email \_\_\_\_\_  
(required if you want to receive a confirmation receipt)

Degree \_\_\_\_\_

Specialty \_\_\_\_\_

Sub-Specialty \_\_\_\_\_

Dietary Restrictions \_\_\_\_\_

### Name/Date of Course

Summer Musculoskeletal Radiology Practicum

June 25–29, 2007 • Jackson Hole, Wyoming

\$925 per attendee  \$695 discounted fee\*

\*Discounts apply to NYU School of Medicine alumni, former residents & fellows, techs, physicians and M.D.s employed by the Dept. of Veterans Affairs and full-time active military personnel, and Canadian and overseas physicians.

### Ultrasound Workshop Reservation

Places are limited for these two workshop sessions

Please reserve a place for me in the Tuesday morning workshop

Please reserve a place for me in the Thursday morning workshop

I am not interested in the US workshop

### Educational Needs

If there is a specific question or topic relating to this course, please submit it on the registration form or on the website when registering online.

\_\_\_\_\_  
\_\_\_\_\_  
\_\_\_\_\_  
\_\_\_\_\_

### Methods of Payment

Check in U.S. Dollars made payable to  
“NYU Department of Radiology”

Credit Card

Card Member's Name (print carefully) \_\_\_\_\_

Card # \_\_\_\_\_

Amount to be Charged: \$ \_\_\_\_\_

Bill to:  Visa  Mastercard  American Express

Exp Date: (MM/YYYY) \_\_\_\_\_ / \_\_\_\_\_

Signature (required to process) \_\_\_\_\_

International Postal Money Order (for overseas participants not wishing to submit credit card information)

### Where to Mail or Fax

Michelle Koplik  
NYU Medical Center • Dept of Radiology  
560 1st Avenue, HW-231  
New York, NY 10016

Fax (212) 263-3959

### In Case of Questions, Contact:

Michelle Koplik, Program Coordinator:  
(212) 263-3936 • [Michelle.Koplik@nyumc.org](mailto:Michelle.Koplik@nyumc.org)

Janice Ford-Benner, Director:  
(212) 263-3923 • [Janice.Ford-Benner@nyumc.org](mailto:Janice.Ford-Benner@nyumc.org)

### Confirmation of Course Acceptance

A confirmation will be sent to you by e-mail if you provide your e-mail address clearly.

We no longer send out written or faxed confirmations.

### Refund Policy

An administrative charge of \$75 will be assessed for cancellations made in writing one month or more prior to the start of a course. Refunds will be possible after this date subject to a \$150 fee.

### Course Cancellation Policy

In the unusual circumstance that this course is cancelled, two weeks' notice will be provided and full tuition refunded. The NYU Post-Graduate Medical School is not responsible for any airfare, hotel or other costs incurred.



NEW YORK UNIVERSITY

# Department of Radiology NYU CME Calendar

We hope you'll plan on joining us at one of these CME courses.  
Keep our web-site bookmarked for regular updates.

[www.radcme.med.nyu.edu](http://www.radcme.med.nyu.edu)

## 2007

January 11–19.....	<b>NYU IMAGING THROUGH VIETNAM AND CAMBODIA</b> .....	Vietnam and Cambodia
January 29–February 2.....	<b>IMAGING UPDATE AT HUALALAI (NEURORADIOLOGY/HEAD &amp; NECK)</b> .....	Four Seasons, Hualalai Big Island of Hawaii
February 5–9 .....	<b>IMAGING UPDATE IN SNOWMASS</b> .....	Snowmass, CO
March 12–16.....	<b>NYU CLINICAL IMAGING ESSENTIALS IN DEER VALLEY</b> .....	Deer Valley, Utah
April 2–6.....	<b>DIAGNOSTIC IMAGING UPDATE</b> .....	Westin Resort (Brand New) St. Maarten
April 27–28.....	<b>VIRTUAL COLONOSCOPY WORKSHOP</b> .....	South Beach, Miami
June 1–3.....	<b>4TH ANNUAL SPORTS MEDICINE IMAGING COURSE</b> .....	Hospital for Joint Disease (New York, NY)
June 25–29.....	<b>SUMMER MUSCULOSKELETAL RADIOLOGY PRACTICUM IN THE TETONS</b> .....	Four Seasons, Jackson Hole, Wyoming
July 30–August 2.....	<b>SUMMER SCOTLAND RADIOLOGY SYMPOSIUM</b> .....	Edinburgh, Scotland
October 11–14.....	<b>AN NYU AUTUMN UPDATE OF BREAST &amp; WOMEN'S IMAGING ESSENTIALS IN VERMONT</b> .....	The Equinox, Manchester, Vermont
Fall .....	<b>VIRTUAL COLONOSCOPY WORKSHOP</b> .....	New York, NY
Fall .....	<b>MRI: CLINICAL STATE OF THE ART</b> .....	NYU Medical Center (New York, NY)
December 17–22 .....	<b>26TH HEAD TO TOE IMAGING CONFERENCE</b> .....	New York, NY

## 2008

January 8–11 .....	<b>IMAGING UPDATE ON NEVIS</b> .....	Four Seasons, Nevis
February 4–8.....	<b>CLINICAL IMAGING ON LANA'I</b> .....	Four Seasons, Lana'i (Hawaii, formerly Manele & Koele)
December 15–20.....	<b>27TH ANNUAL HEAD TO TOE IMAGING CONFERENCE</b> .....	New York, NY

## More to be announced for 2007–08

### For More Information, Contact:

Michelle R. Koplik  
Program Coordinator – Education & Corporate Relations  
NYU Medical Center • 560 1st Avenue (HW-231)  
New York, NY 10016  
Telephone: (212) 263-3936  
E-mail: [michelle.koplik@nyumc.org](mailto:michelle.koplik@nyumc.org)

Janice Ford Benner  
Director – Education & Corporate Relations  
NYU Medical Center • 560 1st Avenue (HW-231)  
New York, NY 10016  
Telephone: (212) 263-3923  
E-mail: [janice.ford-benner@nyumc.org](mailto:janice.ford-benner@nyumc.org)

SCHOOL OF  
MEDICINE



NEW YORK UNIVERSITY

New York University  
School of Medicine  
Department of Radiology  
560 1st Avenue, TCH-HW-231  
New York, NY 10016

Non-Profit Organization  
U.S. Postage  
**Paid**  
New York University



June 25–29, 2007  
Four Seasons Resort  
Jackson Hole, Wyoming

## Summer Musculoskeletal Radiology Practicum