

SCHOOL OF
MEDICINE



NEW YORK UNIVERSITY

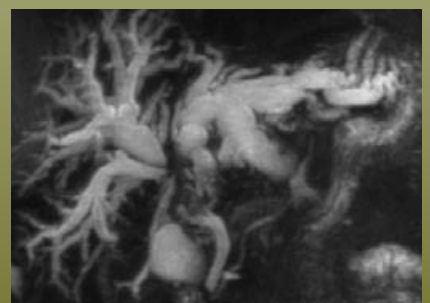
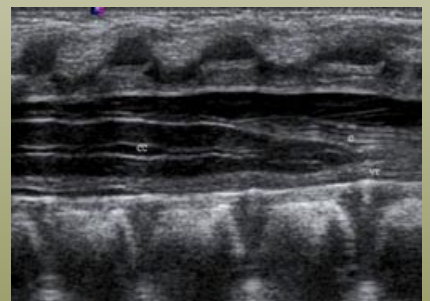
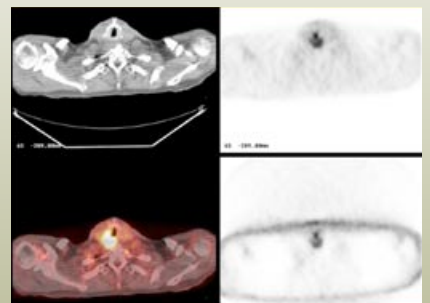
Sponsored by
NYU Post Graduate Medical School
and the Department of Radiology

Summer Radiology Practicum

on the Maine Coast

JUNE 27–JULY 1, 2005

**Spruce Point Inn Resort & Spa
Boothbay Harbor, Maine**



Summer Radiology Practicum General Information



Purpose

Many recent technological advancements in body and musculoskeletal imaging are being rapidly integrated into clinical practice—including PET, 3T MRI, cartilage imaging, whole body imaging and vascular MR imaging. Maintenance of certification requires review of essential imaging techniques in all areas of radiology including musculoskeletal, body, pediatric and vascular.

Target Audience

This course is designed for practicing radiologists in a variety of practice settings including generalists as well as clinical radiologists who concentrate on or wish to build their skills in musculoskeletal and/or body imaging.

Course Description

The goals of the course are to provide a review of a range of fundamentals in musculoskeletal, body and pediatric imaging with inclusion of diagnostic quandaries and pitfalls, as well as provide exposure to and applications for emerging imaging techniques in these fields that are rapidly entering clinical practice.

This five-day course will cover a variety of topics on PET imaging, abdomen, vascular, pediatric and musculoskeletal imaging. The lectures will allow participants to improve their diagnostic skills as well as develop understanding of the newest techniques as applied to musculoskeletal, body and vascular imaging. There will be ample time for one-on-one discussions with the faculty. In addition, faculty breakfast roundtables have been included on two mornings to increase your faculty interactions.

Educational Objectives

Upon completion of this course, attendees should be able to:

- Summarize the appropriate uses of MRI including MRA, MRCP, 3T and whole body MR imaging in evaluating vascular, biliary and MSK systems.
- Outline the current status of cartilage and MSK infection imaging, and Basic Principles and Applications of PET/CT above and below the diaphragm.

- Demonstrate various MR, CT and ultrasound techniques and protocols in the diagnosis of diseases of the musculoskeletal and pediatric spine and GU system.
- Recognize common imaging pitfalls in PET and musculoskeletal imaging.
- Classify the types of disorders and their MRI appearances causing hip, elbow, and knee pain, and disorders involving the pediatric GU system.

Accreditation Statement

The NYU Post-Graduate Medical School is accredited by the Accreditation Council for Continuing Medical Education (ACCME) to provide continuing medical education for physicians.

Credit Designation Statement

The NYU Post-Graduate Medical School designates this educational activity for a maximum of 23.5 hours category 1 credits toward the AMA Physician's Recognition Award. Each physician should claim only those hours that he/she spent in the activity.

Disclosure Statement

The NYU Post-Graduate Medical School adheres to ACCME Standards regarding industry support of continuing medical education. Disclosure of any commercial relationships as well as discussion of off-label or investigational use of any drug, device or procedure by the faculty will be made known at the symposium.

Registration Information

Registration fees are \$875 per attendee (\$595 for NYU alumni, residents and fellows, retirees, employees of the V.A. Medical Center and Canadian physicians) and include coffee breaks, a welcome reception for the entire family, and course materials.

Refund Policy

An administrative charge of \$75 will be assessed for cancellations made in writing one month or more prior to the start of a course. Refunds will be possible after this date subject to a \$150 fee.

Course Director

SANDRA L. MOORE, M.D.

NYU Faculty

JOHN B. AMODIO, M.D.

Assistant Professor of Radiology

ELIZABETH M. HECHT, M.D.

Assistant Professor of Radiology

SANDRA L. MOORE, M.D.

Assistant Professor of Radiology

KAREN A. MOURTZIKOS, M.D.

Assistant Professor of Radiology

GEORGE NOMIKOS, M.D.

Assistant Professor of Radiology

Guest Faculty

GARRY E. GOLD, M.D.

Associate Professor of Radiology
Stanford University Hospital
Stanford, California

on the Maine Coast Program

SUNDAY, JUNE 26, 2005

4:00–6:00pm *Registration* (off Main Lobby)

MONDAY, JUNE 27, 2005

- 7:00am *Registration and Breakfast*
7:50am *Welcome and Introduction*
Sandra L. Moore, M.D., Course Director
- 8:00am **BASIC PRINCIPLES AND APPLICATIONS OF PET/CT**
Karen A. Mourtzikos, M.D.
- 8:45am **SONOGRAPHY OF PEDIATRIC EMERGENCIES**
John B. Amodio, M.D.
- 9:30am **MR IMAGING OF FOCAL LIVER LESIONS**
Elizabeth M. Hecht, M.D.
- 10:15am *Questions and Discussion*
10:30am *Coffee Break*
10:45am **MR OF THE KNEE**
George Nomikos, M.D.
- 11:45am **MR OF CARTILAGE**
Garry E. Gold, M.D.
- 12:30pm **REPORTING CARTILAGE LESIONS OF THE KNEE**
Sandra L. Moore, M.D.
- 12:45–1:00pm *Questions & Discussion*

TUESDAY, JUNE 28, 2005

- 7:00am *Breakfast*
7:45am **CT OF THE MUSCULOSKELETAL SYSTEM**
Garry E. Gold, M.D.
- 8:30am **MARROW (INCLUDING WHOLE-BODY IMAGING)**
Sandra L. Moore, M.D.
- 9:15am **MR OF THE HIP**
George Nomikos, M.D.
- 10:00am *Questions and Discussion*
10:15am *Coffee Break*
10:30am **STATE-OF-THE-ART PERIPHERAL MRA**
Elizabeth M. Hecht, M.D.
- 11:15am **PET/CT IN LYMPHOMA AND IN THE EVALUATION OF LYMPH NODES**
Karen A. Mourtzikos, M.D.
- 12:00–12:15pm *Questions and Discussion*

WEDNESDAY, JUNE 29, 2005

- 7:00am *Breakfast Roundtables with the Body Faculty*
Please join them over breakfast for additional discussion and/or questions.
- 7:45am **PET/CT IN COLORECTAL CARCINOMA**
Karen A. Mourtzikos, M.D.
- 8:30am **PRACTICAL TOPICS IN PEDIATRIC GU**
John B. Amodio, M.D.
- 9:15am **IMAGING OF RENAL MASSES**
Elizabeth M. Hecht, M.D.
- 10:00am *Questions & Discussion*
10:15am *Coffee Break*
10:30am **IMAGING OF MUSCULOSKELETAL INFECTION**
Sandra L. Moore, M.D.
- 11:15am **MUSCULOSKELETAL MRI: TECHNICAL CONSIDERATIONS**
Garry E. Gold, M.D.
- Noon–12:15pm *Questions & Discussion*



THURSDAY, JUNE 30, 2005

- 7:00am *Breakfast Roundtables with the Musculoskeletal Faculty*
Please join them over breakfast for additional discussion and/or questions.
- 7:45am **RADIOLOGIC EVALUATION OF ORTHOPEDIC HARDWARE**
George Nomikos, M.D.
- 8:30am **ADVANCED PROBLEMS IN IMAGING OF INFECTION**
Sandra L. Moore, M.D.
- 9:00am **3-T MAGNETIC RESONANCE IMAGING**
Garry E. Gold, M.D.
- 9:45 am *Questions and Discussion*
10:00am *Coffee Break*
10:15am **RENAL MASSES OF CHILDHOOD**
John B. Amodio, M.D.
- 11:00am **PITFALLS OF PET/CT**
Karen A. Mourtzikos, M.D.
- 11:45am–Noon *Questions and Discussion*

FRIDAY, JULY 1, 2005

- 7:00am *Breakfast*
7:45am **SONOGRAPHY OF THE INFANT HIP AND SPINE**
John B. Amodio, M.D.
- 8:30am **ADVANCES IN MRCP**
Elizabeth M. Hecht, M.D.
- 9:15am **MR OF THE ELBOW**
George Nomikos, M.D.
- 10:00am *Questions & Discussion*
10:15am *Coffee Break*
10:30am **WRIST IMAGING INCLUDING PITFALLS AND OVERCALLS**
Sandra L. Moore, M.D.
- 11:15am **WHO WANTS TO BE A MILLIONAIRE: THE RADIOLOGY EDITION**
Garry E. Gold, M.D.
- 12:15pm *Final Questions & Discussion*
12:30pm *Adjournment*

Educational Grant Acknowledgement

The organizers gratefully acknowledge the educational grant received from the following organizations:

BERLEX LABORATORIES
SIEMENS MEDICAL SOLUTIONS, INC.

Summer Radiology Hotel Information



SPRUCE POINT INN **Reserve Early!**

www.sprucepointinn.com
1-800-553-0289

The Spruce Point Inn offers guests a chance to experience the simple, carefree and casual experience of a time gone by. Located just minutes from bustling Boothbay Harbor, the Inn rests on a secluded peninsula that stretches into beautiful Linekin Bay, offering unsurpassed views of Boothbay Harbor. It is approximately one hour north of Portland, Maine. For those in the group not interested in renting a car to explore the Maine

coast, the Spruce Point Inn is arranging for free transportation for you from the Portland Airport.

Built in 1896, the Spruce Point Inn is unique. The Spruce Point Inn offers the quintessential Maine resort experience—the resort is low-key and excellent for families as it has two pools and whirlpool spas, a children's program, two tennis courts, shuffleboard, croquet, bicycles, tandem kayaks, two restaurants (one in an elegant dining room overlooking the water and a more casual bistro for the family; plus, the oceanfront deck is great for our group lobster-bake). The New Spa at Spruce Point is set amidst a Zen garden and boasts a small state-of-the-art fit-

ness center with professional trainers, three spa treatment rooms, changing facilities with lockers and showers, a secluded Jacuzzi and lounge area on a private deck with nutritional snacks and refreshments available.

With 93 lodgings spread over 15 beautifully landscaped acres, it can either be described as a small resort or a large inn. Accommodations range from rooms to quaint cottages and lodges to oceanview deluxe rooms and even some larger condo units, all retaining a traditional New England ambiance.

Distant foghorns sound in the morning mist and ocean breezes drift through fragrant stands of evergreens. Just off shore, lobster boats, windjammers and private yachts ply the cool Atlantic waters. Boothbay Harbor is great for strolling, restaurants, boating excursions and shopping. As a special courtesy, the Spruce Point Inn will be offering complimentary shuttle service to town throughout the day as Boothbay Harbor is about 1 1/2 miles away but parking can be bothersome.

The hotel staff has a genuine warmth and desire to make your stay a truly remarkable experience. We recommend Spruce Point Inn for people not interested in a glitzy formal resort—Spruce Point is easygoing, casual and great for families or individuals wishing to experience the true Maine coast.



Practicum on the Maine Coast



Types of Accommodations at Spruce Point Inn

Group Rates listed below include a daily buffet breakfast for two persons and a Welcome Reception on Monday evening for the entire family. Rates listed below do not include the 7% Maine Lodging Tax and Hotel Service Charges (which are 10% for hotel guestrooms and 15% for Cottages and Condos).

Gardenview Room at \$170

Traditional New England Style finished in knotty pine with a woodland view.

Deluxe Room at \$225

Deluxe Rooms are located in the Main Inn, Lodges and our new Lark and Cardinal Buildings with a woodland or oceanview.

Oceanview Deluxe Room at \$265

Oversized room with double French doors that open up to a private patio where you can enjoy great views of Boothbay Harbor. These rooms have

either 2 queens or a King and queen size pullout and would be ideal for families!

Gardenview Cottage at \$365

New England Style Cottage nestled in the pines with a partial view of the ocean. Cottages have 2 or 3 bedrooms and efficiency kitchens.

Amenities for all rooms:

- Private deck • Mini fridge • Cable TV
- Coffee Maker • Iron/board
- Additionally, all rooms are unique and may include a: fireplace, kitchenette, sitting rooms, pull-out couch, whirlpool tubs and more.

We recommend you go to the website for more information about the accommodations, types of units and a site map. Additionally, luxury accommodations are being added for the 2005 season.

www.sprucepointinn.com



Summer Radiology Practicum Group Activities



Please refer to the instructions at the top of Page 9. Note that reservations for activities should be made by May 25th to avoid disappointment and should be made by phone to (207) 633-4152, Ext 608 but can also be handled by fax/mail but please be sure you receive your confirmation from the hotel.

Children's Program

The Lighthouse Kid's Camp will be available Monday through Thursday from 9:30 to 2:30. Your children will enjoy arts and crafts, swimming, shuffleboard, lawn games and a cook out lunch. On Monday and Wednesday the Lighthouse Camp Kid's Night Out will be offered. Bring the kids out to enjoy a movie, arts and crafts and pizza.

\$25.00 PER CHILD FOR THE LIGHTHOUSE KID'S CAMP

\$15.00 PER CHILD FOR THE KID'S NIGHT OUT



Sunday, June 26

(Main Arrival Day)

Conference Registration

4:00–6:00 P.M.

(Spruce Point Inn)

Dinner on your own

6:00–9:00 P.M.

As you will be tired from a long day of traveling, we strongly recommend that you make your reservations in advance when you book your hotel reservation for either Spruce Point Inn's Bogie's Hideaway (casual) or 88 Grandview (more upscale and with a lovely view of the harbor; jackets are not required and children are welcome, smart casual dress is required).

Monday, June 27

(First Day of the Conference)

Morning On Your Own

Enjoy the resort and visit the spa or go into town (Boothbay Harbor); free transportation will be provided to you all day from 9:00 to 5:00.

Shuttle to Boothbay Harbor

10:00 A.M.

You are welcome to go on your own anytime but if you'd like to join up with other spouses in the group this morning to walk around Boothbay Harbor, check-out the shops and restaurants, see the docks offering plenty of addi-

tional boating excursions, then meet in the front lobby and the free shuttle will take you into town. Return will be at noon from a designated spot (Note: Boothbay Harbor is about 1½ miles away from Spruce Point Inn)

Mackerel Fishing on the Miss Boothbay

2:00–4:00 P.M.

Meet at the Spruce Point Inn Dock for a fun fishing adventure aboard the Miss Boothbay. There are lots of mackerel to be caught in the waters near Boothbay Harbor. The fish are plentiful and the scenery is spectacular.

\$30 PER ADULT (MAX OF 15)

\$20 PER CHILD 5 AND OLDER

Good trip for families with kids ages 5 and up.



Burnt Island Lighthouse Cruise & Island Tour

2:15–4:45 P.M.

Meet at the Spruce Point Inn Dock for a short cruise across the Harbor

on the Maine Coast

to historic Burnt Island Lighthouse. Keeper Joseph Muise and his family acquaint you with lighthouse living as you visit their home and climb the spiral staircase into the lantern room. Learn about Maine's fisheries, flora and fauna on your picturesque hike around the 5-acre island.

(2:30–4:30 on Burnt Island)

**30-PERSON MINIMUM AND
40-PERSON MAXIMUM**

**\$20 ADULTS
\$12 CHILDREN AGES 11 AND UNDER**

Private Welcome Reception (at Spruce Point Inn)

6:00–7:00 P.M.

(For attendees, faculty and families)

No Charge. Meet and mingle with your co-course delegates and their families.

Tuesday, June 28

Sunrise Sail

5:00–7:00 A.M.

Start the day like the Maine Windjammer Captains of Old as you depart from Spruce Point Inn on a Sunrise Sail of Boothbay Harbor, the Outer Islands and Open Ocean. Sip hot coffee and taste delicious pastries as Captain Joseph Tassi sails the pristine morning waters. This unique adventure will allow you to see harbor seals, birds and our local Lobsterman farming the sea at first light.

MAX OF 14 PEOPLE

\$25 PER PERSON

The Farnsworth Art Museum Rockland, Maine

8:30 A.M.–1:00 P.M.

Transportation has been provided for you to visit the Farnsworth Art Museum, offering a nationally recognized collection of American art in its elegantly appointed galleries (Gilbert Stuart, Thomas Sully, Thomas Eakins, Eastman Johnson, among others). The museum's Wyeth Center exclusively features works of Andrew, N.C. and Jamie Wyeth.

**\$9 ENTRANCE FEE FOR ADULTS
NOT RECOMMENDED FOR CHILDREN**



Lobster Trap Hauling with Dan Kaler

9:00–10:00 A.M.

10:30–11:30 A.M.

12:00–1:00 P.M.

1:30–2:30 P.M.

(Recommended for children)

Max of 6 people will enjoy this 1½ hour adventure where you will learn the details and tricks of the trade of lobstering. Great for children as the boat stays close to the shore.

Departs from Spruce Point Inn dock. (Many choices in times but please indicate all the possible times you can go as the boat only holds 6 persons)

MAX OF 6 PER BOAT

(\$10 PER PERSON) \$60 PER TRIP

Adult and Junior Sailing Lessons

1:00–4:00 P.M.

Receive expert advice and instruction from the Captain Joe Tassi aboard the Schooner Lazy Jack. For your convenience, the boat will be picking up at Spruce Point Inn. Step aboard and back in time on the historic windjammer Lazy Jack. Help set sail and take a turn at the wheel, or just relax and enjoy the beauty of the Maine coast. Keep a sharp eye out for porpoise and harbor seals as we sail past Burnt Island Lighthouse to the outer islands of Boothbay.

MAX OF 14 PEOPLE

\$25 PER PERSON

Special Spruce Point Inn Italian Buffet

6:30–8:30 P.M.

(Optional)

Chefs will prepare your favorite dish with your choice from a variety of pastas, sauces and seafood including shrimp and lobster. Four other food-stations

will feature an antipasto and salad station with Italian soup, seafood station with oysters, clams and crab, a gourmet pizza and fresh baked bread station—and don't forget to visit the Ice Cream Sundae Station.

**\$50 PER PERSON ADULTS
\$23 PER PERSON AGES 10 AND UNDER
(INCLUSIVE OF TAX AND GRATUITY)**

Drive-In Family Movie under the Stars

8:30–10:30 P.M.

You will not want to miss the most incredible movie experience ever! Enjoy state-of-the-art technology and sound on this amazing 24-foot high and 32-foot long movie screen with the latest movies, popcorn and a special air walk with basketball hoop, climbing area and slide.

**\$20 PER ADULT
\$10 PER CHILD AGES 3–12**



Wednesday, June 29

Aquarium Adventure

9:30 A.M.–NOON

(Great for kids)

The Marine Resources Aquarium in Boothbay Harbor includes a wide variety of sport fish, sharks and a special attraction is the 20-foot long elevated touch tank with lobsters, crabs, sea cucumbers, star fish and scallop. Parents and kids both welcome.

MAX OF 32

**PAY THE ENTRANCE FEE AT THE DOOR
\$5 PER ADULT AND \$3 PER CHILD**

Summer Radiology Practicum Group Activities

Monhegan Island Excursion

12:30–7:30 P.M.

(Including lunches)

(Not recommended for young children due to the length of the day and the amount of walking or hiking you will likely do on Monhegan)

Twelve miles out to sea, it is unique among the best places to visit in Maine. Having successfully resisted modern development, this small island just 1/2 mile wide and 2 miles long is a haven for those seeking beauty, quiet and relaxation. Hike the scenic trails along the shore or through the Cathedral Pines or browse the art galleries, lighthouse museum and craft shop. (Box lunch included.)

MAX OF 145 PERSONS

\$50 PER ADULT; \$30 PER CHILD (6–14)

Special Spruce Point Inn Yankee Barbecue

7:30–9:30 P.M.

(Optional)

After a long day to Monhegan, you may want to enjoy a barbecue featuring New England clam chowder, Caesar salad, salads, swordfish tips, baby back ribs and barbecued beef strips, southern style chicken, hot dogs and hamburgers, corn on the cob, fruit display and desserts and beverages.

\$37 PER PERSON ADULTS

**\$20 PER PERSON AGES 10 AND UNDER
(INCLUSIVE OF TAX AND GRATUITY)**



Thursday, June 30

Coastal Maine Botanical Gardens Tour

9:00 A.M.–12:00 P.M.

(Not recommended for children)

Located in the coastal village of Boothbay, on Barters Island Road, the Coastal Maine Botanical Gardens invites you to enjoy year-round beauty on its woodland paths and along the banks of the Back River. More than two miles of walks, trails and drives open up the 128-acre landscape that forms the Gardens. The majority of the grounds will be found in their natural state. Here the majestic Maine woods meet the rocky shore. The wetlands shore and the fern glens meet the moss and lichen covered ledges.

**FREE TRANSPORTATION – YOU WILL PAY
THE ENTRANCE FEE AT THE GARDENS**

Adult and Junior Sailing Lessons

9:00 A.M.–NOON

(See description on Tuesday afternoon)

Boothbay Railway Village

9:00 A.M.–NOON

Visit a turn of the century village consisting of more than 24 buildings containing historical exhibits including the Thorndike and Freeport railroad stations, Boothbay Town Hall, general store, blacksmith shop, schoolhouse, toy shop, fire house, barber shop, post office, barrel shop, filling station. Ride on a coal-fired, narrow gauge steam train to an exceptional antique vehicle display housing more than 50 vehicles from 1907-1949.

**FREE TRANSPORTATION; JUST PAY
ENTRANCE FEE AT THE VILLAGE OF \$8 PER
ADULT AND \$4 PER CHILD AGES 3 TO 16**

Golf Tournament (Boothbay Country Club)

1:00–5:00 P.M.

Tee-times have been arranged for you to enjoy the Boothbay Country Club course, one of the most scenic and upscale 18-hole golf courses in Maine.

Lunch is available at the Golf Course. Greens fees are \$70.00 rent clubs for \$25.00



Freeport Shopping Excursion

12:30–5:00 P.M.

Visit L.L. Bean and the picturesque town of Freeport, Maine with some of the biggest names in retail. It is located about 50 minutes from Boothbay so this will allow you over 2 hours to explore on your own (Free transportation; you will be on your own in Freeport) (but reserve a place as seating is limited).

Afternoon Sail aboard the Bay Lady

2:15–3:45 P.M.

Depart from Spruce Point Inn aboard the Friendship Sloop, The Bay Lady. Sail near many scenic islands of Boothbay, Burnt Island Lighthouse, Southport Island, Capitol Island, Mouse Island and Ram Island Lighthouse. Enjoy the fresh sea breeze as it determines your course. Your Captain will provide you with interesting bits of information as you pass by coves, other watercraft, and lighthouses.

MAX OF 14

\$20 PER PERSON

Famous Spruce Point Inn Lobster Bake

6:30–9:00 P.M.

(Featuring Lobster and Steak)
(Optional)

Don't miss this evening—our last—as Spruce Point Inn serves the freshest lobster in Boothbay Harbor with a fabulous view; dinner includes lobster, chowdah, steak, salads, corn on the cob, corn bread and rolls and a fabulous dessert buffet, and beverages.

\$60 PER PERSON ADULTS

**\$23 PER PERSON AGES 10 AND UNDER
(INCLUSIVE OF TAX AND GRATUITY)**

Friday, July 1

Main Departure day

No special activities have been planned.
Checkout time is 11:00 a.m.

on the Maine Coast Group Activity Sign-Up Form

Group Name: NYU Radiology Group • June 27–July 1, 2005 • Spruce Point Inn

It is recommended that you call 207-633-4152 ext 608 to make reservations for your activities by May 25. For faxing or mailing, send to the address below or fax to 207-633-7138. Group Activity charges will be billed to your guestroom. For Children's Program, please list age of each child. Cancellation by attendee must be made by May 25 without penalty

after which time refunds will only be granted if the space is resold on the activity/tour. Reservations are not guaranteed until written confirmation is received. Prices are based on current information (December 2004) and are subject to change. We suggest that you sign up in advance due to the minimum and maximum numbers required.

Monday, June 27, 2005

Event	Event Time	Per-Person Price	# of People	Total
<input type="checkbox"/> Children' Program Ages of Children _____, _____, _____	9:30 a.m.–2:30 p.m.	\$25/child	_____	\$ _____
<input type="checkbox"/> Shuttle to Boothbay <i>(First-day to orient yourselves and meet others in the group)</i>	10–Noon	No charge but sign-up	_____	\$ N/A
<input type="checkbox"/> Burnt Island Lighthouse	2:15–4:45 p.m.	\$20/adult \$12/child 11 & under	_____	\$ _____
<input type="checkbox"/> Mackerel Fishing	2:00–4:00 p.m.	\$30/adult \$20/child 5 & older	_____	\$ _____
<input type="checkbox"/> Private Welcome Reception	No need to sign up for this reception		_____	\$ _____

Tuesday, June 28, 2005

<input type="checkbox"/> Sunrise Sail	5:00–7:00 a.m.	\$25	_____	\$ _____
<input type="checkbox"/> Farnsworth Art Museum <i>You will pay Museum \$9 entrance fee but sign up for the transportation on this form</i>	8:30 a.m.–1:00 p.m.		_____	\$ N/A
<input type="checkbox"/> Children's Program Ages of Children _____, _____, _____	9:30 a.m.–2:30 p.m.	\$25/child	_____	\$ _____
<input type="checkbox"/> Lobster Trap Hauling	9:00–10:00 a.m.	\$10/adult or child	_____	\$ _____
<input type="checkbox"/> Lobster Trap Hauling	10:30–11:30 a.m.	\$10/adult or child	_____	\$ _____
<input type="checkbox"/> Lobster Trap Hauling	12:00–1:00 p.m.	\$10/adult or child	_____	\$ _____
<input type="checkbox"/> Lobster Trap Hauling	1:30–2:30 p.m.	\$10/adult or child	_____	\$ _____
<input type="checkbox"/> Adult and Junior Sailing	1:00–4:00 p.m.	\$25/adult or child	_____	\$ _____
<input type="checkbox"/> Special Italian Buffet	6:30–8:30 p.m.	\$50/adult \$23/child (3–10)	_____	\$ _____
<input type="checkbox"/> Drive-In Family Movie Under the Stars	8:30–10:30 p.m.	\$20/adult \$10/child	_____	\$ _____

Wednesday, June 29, 2005

<input type="checkbox"/> Aquarium Adventure <i>Free transportation; you will pay the entrance fee of \$5/adult (\$3/child) at the Aquarium but sign up for transportation</i>	9:30 a.m.–Noon		_____	\$ N/A
<input type="checkbox"/> Children's Program Ages of Children _____, _____, _____	9:30 a.m.–2:30 p.m.	\$25/child	_____	\$ _____
<input type="checkbox"/> Monhegan Island Trip <i>(not recommended for young children)</i>	12:30–7:30 p.m.	\$50/adult \$30/child (6–14)	_____	\$ _____
<input type="checkbox"/> Special Yankee Barbeque	7:30–9:30 p.m.	\$37/adult \$20/child (3–10)	_____	\$ _____

Thursday, June 30, 2005

<input type="checkbox"/> Botanical Gardens Tour <i>Free transportation; you will pay the entrance fee at the Gardens but sign up for transportation</i>	9:00 a.m.–Noon		_____	\$ N/A
<input type="checkbox"/> Adult and Junior Sailing	1:00–4:00 p.m.	\$25/adult or child	_____	\$ _____
<input type="checkbox"/> Children's Program Ages of Children _____, _____, _____	9:30 a.m.–2:30 p.m.	\$25/child	_____	\$ _____
<input type="checkbox"/> Railway Village <i>Free transportation; you will pay the entrance fee of \$8/adult and \$4/child (3–16) but sign-up for transportation</i>	9:00 a.m.–Noon		_____	\$ N/A
<input type="checkbox"/> Golf Tournament <i>Sign up for transportation only; greens fees are currently \$70 and clubs \$25</i>	1:00–5:00 p.m.		_____	\$ N/A
<input type="checkbox"/> Afternoon Sail	2:15–3:45 p.m.	\$20/adult or child	_____	\$ _____
<input type="checkbox"/> Freeport Shopping	12:30–5:00 p.m.	<i>Sign up for transportation only</i>	_____	\$ N/A
<input type="checkbox"/> Famous Lobster Bake	6:30–9:00 p.m.	\$60/adult or child eating lobster \$23/child (3–10) not eating lobster	_____	\$ _____

Total Due \$ _____

Registrant's Information

Name of Registrant _____
 Address _____

 E-mail Address _____
 Telephone # _____

Methods of Payment

Check made payable to "Spruce Point Inn"
 Credit Card: Visa Mastercard AmEx
 Card Member's Name _____
 Card # _____
 Exp Date: Month/Year _____ / _____
 Signature _____

Summer Radiology Practicum Hotel Reservation Form

Group Name: NYU Summer Radiology Practicum

June 26–July 1, 2005
Spruce Point Inn Resort & Spa



SPRUCE POINT INN
RESORT & SPA

The Accommodations

The Spruce Point Inn Resort and Spa is now reserving rooms for the NYU Radiology CME Conference attendees, with an arrival of Sunday June 25 and a departure of Friday July 1, 2005. A limited number of rooms are available for a Friday or Saturday arrival. In addition a limited number of rooms are available departing on Saturday or Sunday. Spruce Point offers 7 very unique levels of accommodations. Rates are per night and include breakfast buffet for 2 and a Fabulous Oceanside Cocktail Party on Monday evening. In addition to the room rates there is a 7% Maine Lodging Tax and 10% Hotel charge for Guestrooms and a 7% Maine Lodging Tax and 15% Hotel charge for Cottages and Condominiums.

Booking Your Reservation

It is highly recommended that you call the Spruce Point Inn Resort and Spa directly to make reservations. The hotel's reservations department is open 9:00 a.m. to 5:00 p.m. until May and after that time from 8:00 a.m. to 8:00 p.m. Please call the Reservations Department at 1-800-553-0289 to assist you in finding

the perfect accommodation for your stay in Boothbay Harbor. To ensure that you receive the ideal accommodation, this is the preferred method of reservation. If you would like, you can mail the form to the address below or fax to 207-633-7138. A deposit of two nights is required in order to guarantee the reservation. At 30 days prior to your check in, payment in full is requested. Reservations after May 25 are subject to availability, but note that our room block could be filled even sooner. Please note that the reservation is not guaranteed until you have received a confirmation from the hotel.

Cancellation Policy

The deposit is refundable if cancellation is received at least 30 days prior to arrival at which time a \$50.00 processing fee will be charged. Cancellations made within 30 days prior will be charged the full package rate to the credit card used to reserve your room unless we are able to resell the room. Any reserved rooms that are left unoccupied due to no shows, late arrivals or early departures will be charged the full nightly rate.

Children's Dining

Breakfast buffet may be added for \$15 per child inclusive of service & tax and a la carte dining in the restaurant is also available for children.

Extending Your Stay

The NYU Group rate is available 3 days prior and 3 days after the event and includes breakfast for two each morning. Please reserve early to ensure your requested accommodation.

Transportation

Complimentary Transportation from Portland Airport

As the hotel is providing free shuttles, we hope you will understand that you may experience a maximum waiting time of one hour and that you are responsible for notifying the hotel 30 days in advance if there are schedule changes. The hotel is providing this as a special courtesy to our group.

Check In/Check Out

Check in time begins at 3:00. Availability of rooms cannot be guaranteed before that time. Check out time is 11:00 a.m.

Arrival Date _____

Departure Date _____

Last Name _____

First Name _____

Telephone _____

Fax _____

E-mail _____

Address _____

City/State/Zip _____

Number of Adults _____ Number of Children _____

Children's Ages _____

Special Requests _____

Payment Information (Check One)

Visa MC AmEx DISC Check

Name as it appears on credit card _____

Credit Card Number _____

Exp Date: Month/Year _____ / _____

Signature _____

Transportation

Will you need transportation from Portland Jet Port?

Yes No

Number of passengers _____

Airport Pick Up Date _____

Flight Number _____

Airline _____

Flight Arrival Time _____ Flight Departure Time _____

Preferred Dinner Reservation for arrival night, please specify date and time _____

Type of Accommodation Requested:

(Please type 1 for first choice and 2 for second choice)

___ Gardenview @ \$170 ___ Oceanview Deluxe @ \$265

___ Deluxe @ \$225 ___ Partial View Cottage @ \$365

Mail to: Spruce Point Inn • Box 237 • Grandview Avenue • Boothbay Harbor, ME 04538 • ATTN: Reservations • or Fax to: 207-633-7138

on the Maine Coast Registration Form

NYU Summer Radiology Practicum on the Maine Coast

June 27–July 1, 2005
Spruce Point Inn

Online
Registration
is the Fastest
Method. Go to
[www.radcme.
med.nyu.edu](http://www.radcme.med.nyu.edu)

Online Registration is fast and easy.
Go to www.radcme.med.nyu.edu
or Fax to **212-263-3959**

If you need to pay by check, see below for mailing address. Otherwise, we think you will find our on-line system to be quick and easy. You should receive an automatic confirmation/receipt via e-mail if you provide your e-mail address when registering.

Participant Information

PLEASE PRINT CLEARLY

Name _____

Address _____

City _____

State _____ Zip _____

Daytime Phone _____

Fax _____

E-mail _____
Now required for e-mail confirmations.

Degree _____

Specialty _____

Subspecialty _____

Dietary Restrictions _____

Name/Date of Courses

Summer Radiology Practicum on the Maine Coast

June 27–July 5, 2005

FULL FEES (PHYSICIANS)

\$875 per attendee

DISCOUNTED FEES* (SEE BELOW FOR QUALIFICATIONS)

\$595 discounted fee

*Discounts apply to NYU School of Medicine alumni, former and current residents and fellows, allied health professionals, M.D.'s employed by the Dept of Veterans Affairs, full-time active military personnel, retired physicians and Canadian and overseas physicians.

Reason for Discount _____

In Case of Questions

Call Michelle Koplik, Program Coordinator, at 212-263-3936 or email michelle.koplik@msnyuhealth.org

Or Janice Ford-Benner, Director, at 212-263-3923 or email janice.ford-benner@med.nyu.edu

Methods of Payment

Check in U.S. Dollars made payable to "NYU Department of Radiology"

Credit Card

Card Member's Name (print carefully) _____

Card # _____

Amount to be Charged: \$ _____

Bill to: Visa Mastercard American Express

Exp Date: Month/Year ____/____

Signature (required to process) _____

International Postal Money Order (for overseas participants not wishing to submit credit card information)

Confirmation of Course Acceptance

A confirmation will be sent to you by e-mail if you provide your e-mail address clearly.

We no longer send out written or faxed confirmations.

Refund Policy

An administrative charge of \$75 will be assessed for cancellations made in writing one month or more prior to the start of a course. Refunds will be possible after this date subject to a \$150 fee.

Course Cancellation Policy

In the unusual circumstance that this course is cancelled, two weeks' notice will be provided and full tuition refunded. The NYU Post-Graduate Medical School is not responsible for any airfare, hotel or other costs incurred.

Educational Needs

If there is a specific question or topic relating to this course, please submit it on the registration form or on the website when registering online.

Where to Mail or Fax

Michelle Koplik
NYU Medical Center
Department of Radiology
560 1st Avenue, TCH HW-231
New York, NY 10016-4998

Fax **212-263-3959**

SCHOOL OF
MEDICINE



NEW YORK UNIVERSITY

Department of Radiology NYU CME Calendar

The NYU Radiology Department has Expanded Its CME Offerings

Keep our web-site bookmarked for regular updates: www.radcme.med.nyu.edu

- 2005**
- March 14–18..... **FRONTIERS IN BODY & MUSCULOSKELETAL IMAGING IN SNOWMASS**Snowmass, Colorado
March 21–25..... **CUTTING-EDGE IMAGING TECHNIQUES IN DEER VALLEY**Deer Valley, Utah
Winter/Spring..... **VIRTUAL COLONOSCOPY WORKSHOPS**Dates to be Announced
May 14–15..... **TRAUMA AND EMERGENCY IMAGING: AN INTERACTIVE APPROACH**NYU Medical Center
May 20–22..... **SPORTS MEDICINE IMAGING**HJD(Hospital for Joint Disease), New York City
June 27–July 1..... **SUMMER RADIOLOGY PRACTICUM**Maine (Spruce Point Inn)
August 1–5..... **NYU RADIOLOGY IN ITALY**Italian Lakes Region (Hotel Dino)
Fall/Winter..... **VIRTUAL COLONOSCOPY WORKSHOPS**Dates to be Announced
November 2–4..... **MRI: CLINICAL STATE OF THE ART**NYU Medical Center
November 5..... **MR SPECTROSCOPY/PERFUSION WORKSHOP**NYU Medical Center
December 12–17..... **CT/MRI HEAD TO TOE CONFERENCE**New York City
- 2006**
- January 9–13..... **CLINICAL IMAGING UPDATE**.....Costa Rica
February 12–16..... **BODY IMAGING ESSENTIALS**St. Johns (U.S.V.I.)
April 10–14..... **SPRING RADIOLOGY UPDATE AT THE ATLANTIS**Bahamas
June 26–30 (tentative)..... **SUMMER RADIOLOGY PRACTICUM**Maine
December 11–16..... **24TH ANNUAL CT/MRI: HEAD TO TOE**New York City
- 2007**
- January 29–February 2..... **NEURORADIOLOGY AND HEAD & NECK IMAGING ON THE BIG ISLAND**.....Four Seasons Hualalai, Big Island, Hawaii
- 2008**
- January 8–11..... **IMAGING UPDATE ON NEVIS**Four Seasons, Nevis

For More Information, Contact:

Michelle R. Koplik
Program Coordinator – Education & Corporate Relations
NYU Medical Center • 560 1st Avenue (HW-231)
New York, NY 10016

Telephone: (212) 263-3936
E-mail: michelle.koplik@msnyuhealth.org

Janice Ford Benner
Director – Education & Corporate Relations
NYU Medical Center • 560 1st Avenue (HW-231)
New York, NY 10016

Telephone: (212) 263-3923
E-mail: janice.ford-benner@med.nyu.edu

SCHOOL OF
MEDICINE



NEW YORK UNIVERSITY

NEW YORK UNIVERSITY
SCHOOL OF MEDICINE
DEPARTMENT OF RADIOLOGY
560 1ST AVENUE, TCH-HW-231
NEW YORK, NY 10016

Non-Profit Organization
U.S. Postage
PAID
New York University

Summer Radiology Practicum

on the Maine Coast

JUNE 27–JULY 1, 2005

SPRUCE POINT INN
BOOTHBAY HARBOR, MAINE

